

Prestigio

THE ART OF HI-TECH



Car Video Recorder

RoadRunner 585

User Manual

Version 1.0

About this user manual

This user manual is specially designed to detail the device's functions and features.

1. Please read this manual before using the device to ensure safe and proper use.
2. Descriptions are based on the device's default settings.
3. Prestigio continuously strives to improve its products. Due to software upgrading, some contents in this user manual may be different from your product. Prestigio reserves the rights to revise this user manual or withdraw it at any time without prior notice. Please take your product as standard.

Conventions used in this manual

In this user manual, we use the following symbols to indicate useful and important information:



Caution: provides safety precaution and important information.



Note: gives additional information.



Tips: usage tips.

- > The order of options or menus you must select to perform a step.

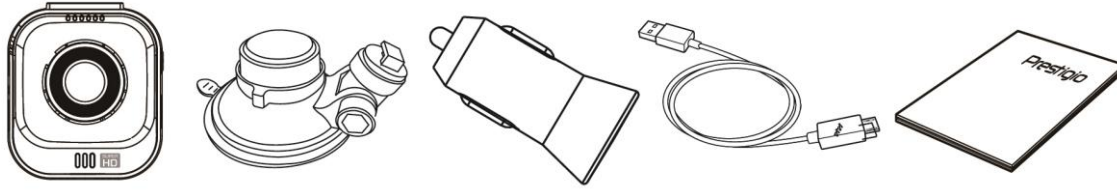
Contents

1.	Unboxing	1
	Inside your package	1
	Device overview	1
2.	Getting started	2
	Insert a microSD card	2
	Install the suction mount.....	2
	Charge the battery.....	3
3.	Settings	4
	Video settings	4
	General settings	4
4.	Recording	5
	Record a video	5
	Take a picture	5
	Record a sound	5
5.	File management	6
	Browse files	6
	Delete a file.....	6
	Lock and unlock a file	6
6.	Playback	7
	Play video on DVR.....	7
	Playback on PC.....	7
7.	Specifications	7

1. Unboxing

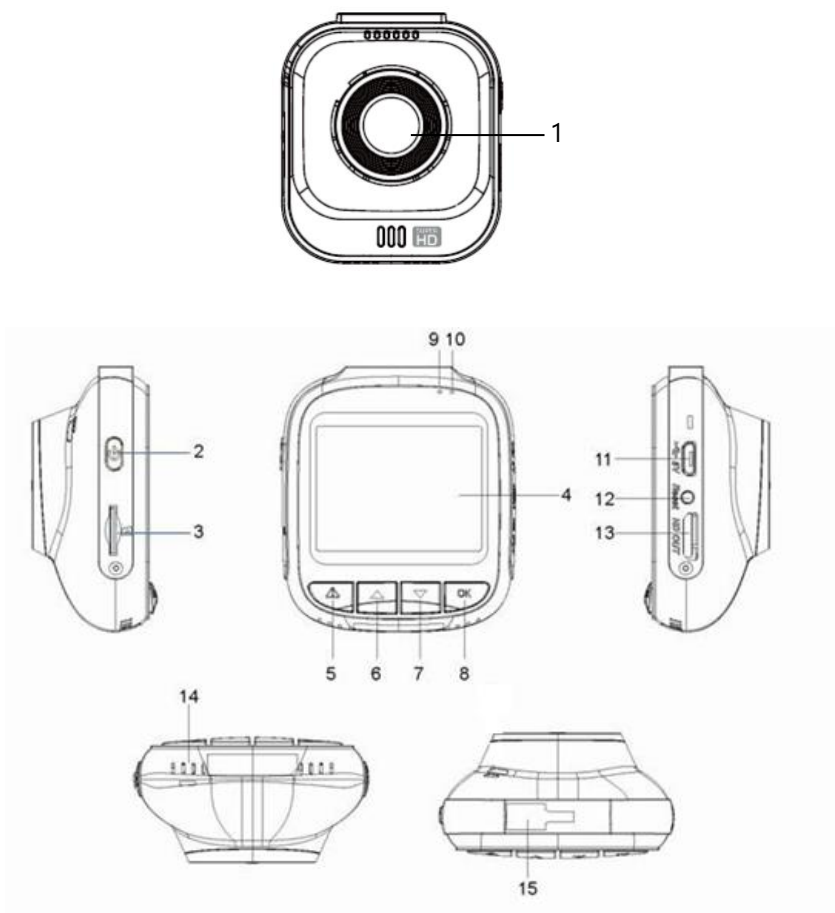
1

Inside your package



- Car video recorder
- Suction mount
- Car charger
- USB cable
- Quick start guide

Device overview



- 1. Lens
- 2. Power on/off
- 3. SD slot
- 4. LCD screen
- 5. Menu/SOS
- 6. Playback/ Up/ Mic
- 7. Down/Photo capture button
- 8. REC/OK
- 9. Recording LED light (RED)
- 10. Power supply LED light (BLUE)
- 11. USB slot
- 12. RESET
- 13. HD out slot
- 14. Speaker
- 15. Bracket slot

2. Getting started

2

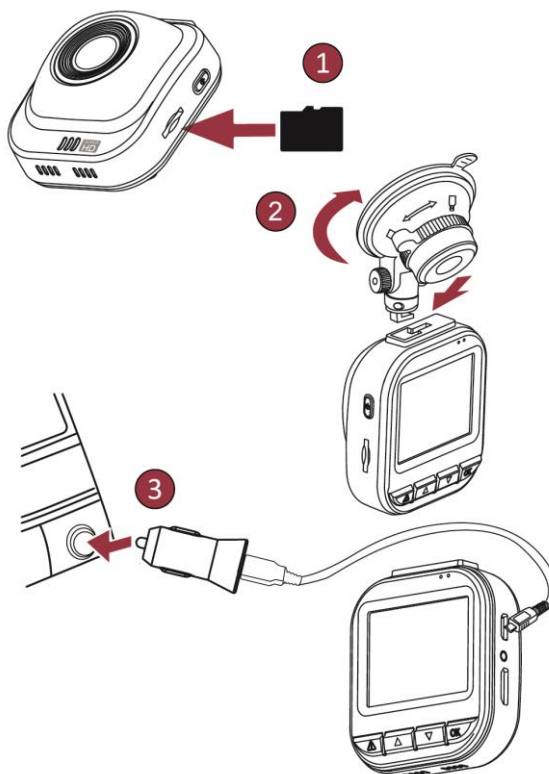
Insert a microSD card

Before starting video recording, please insert a microSD card (not included) into the slot until it locks in place.



The device will automatically recognize it as default storage and all the data will be saved on this card.

Install suction mount

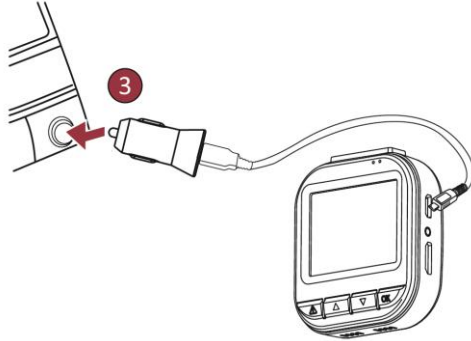


- Follow the arrow pointing direction to insert the suction mount and lock the device into its holder

- Remove the protection paper from the suction mount, and position the device on the clean windshield or dashboard.
-

Charge the battery






Before using the device for the first time, please fully charge the Li-ion battery. The battery will be completely charged in 1-2 hours.



- Using the car charger: charge the device through cigarette lighter. The device will start charging after the car engine is turned on.
- Using micro USB cable: connect the device to AC 5V adapter or the USB port of a computer/laptop.

3. Settings

Before recording, you can set up the device according to your requirements.

- In video/picture preview mode, press [MENU]/  to enter video/picture settings, press [OK] to go the general settings, press [MENU] /  three times to exit.
- In setting list, use []/ [] to navigate the menu, press [OK] to get the options and confirm the selection, press [MENU]/  to exit.

3

Video Settings

Video resolution: Select the resolution of recorded video: 2560x1080 30p, 2304x1296 30p, 1920x1080 45p, HDR 1920x1080 30p, 1920x1080 30p

Recycle record: Set the video duration (1, 3, 5 minutes or off) for loop recording.

When the micro SD card is full, the device will delete the oldest unlocked video files automatically.

WDR setting: On/Off

HDR setting: On/Off

White Balance: Auto/Incandescent/Sunny/Cloudy/Fluorescent

Select an appropriate white balance, so images have a true-to-life color range. It is for specific lighting situations.

Image quality: Set the photo quality: S Fine、Fine、Normal

EV bias: Exposure compensation. Select from EV- 2.0, EV- 5/3, EV- 4/3, EV- 1.0, EV- 2/3, EV- 1/3, EV0.0, EV+1/3, EV+2/3, EV+1.0, EV+4/3, EV+5/3, EV+2.0.

Set exposure value to determine how much light the camera's sensor receives. For lowlight situations, use a higher exposure.

Motion Detection: Turn on or off motion detection.

If there is any motion detected while car DVR has power but not recording, your car DVR will start recording automatically.

Mic setup: On/Off

Set to record sound or not.

Stamp setting: Add Date/time/plate number/logo stamp into videos.

Driving time warning: Off/1 Hour/2 Hours/3 Hours/4 Hours

G-Sensor setting: Off/ High/ Medium/Low

Select the sensitivity of the G-sensor. The smaller the number is, the higher the sensitivity is.

When reaching the sensitive value (such as collision), the recording file will be automatically protected.

Park mode: Off/On

Parking monitor function is triggered by the G-sensor in the unit. When G-sensor is OFF, the parking monitor and CPU will not work. When it is ON, unit will be switched to Parking Monitor Mode after shutting off.

Front Motion Detection: Off/ On

Alerting the driver to movement detected in front of the car.

Light sensor: Off/ On

The function warns you when it detects low light conditions.

General Settings

Language: Choose your language.

Time setup: Set time on device.

Date Format: Select date format.

Beep sound setting: Turn on or off the sound when pressing buttons.

Auto power off setting: Set automatic power off when the device is not in use: 5min, 3min, 1min or off.

Screen shut off: Off/On

Set automatic LCD off when the device is not in use, press any button to wake up..

Card volume: Show the memory card remaining capacity.

Enter plate number: Stamp the car plate numbers into the videos.

Power off Delay: Set delay power off time: 10sec, 20sec, 30sec or off

Power on Delay: Set delay power on time: 10sec, 20sec, 30sec or off

Card format: Format the memory card.

Formatting will erase all your stored data. Back up your data before proceeding.

Reset settings: Restore to default settings.

Version info: Display the current system version.

4. Recording

4

Record a video


Auto video recording

Connect the device to car charger, when the car engine launches, the device will automatically turn on and start loop video recording. When shut off the car engine, the device will save the last file and turn off.

Manual video recording

Press [OK] button to start and stop video recording.

Record the sound

In recording mode, press [▲]/ to turn on or off the sound.

Emergency video recording

During recording, press [△] to lock the video.

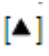


Take a picture

Press [▼] to take photos.


5. File management

5


Browse files

1. In video preview mode, press  once to enter the playback mode.
2. Press [OK] to play the videos.
3. Press / to scroll through the files.

Delete a file

In video model, press [MENU]/  three times to enter the delete file menu. Press [OK] to select the file and confirm the deletion.


Lock and unlock a file

In video recording model, press [MENU]/  to protect the current recording file.

6. Playback

6

Play video on DVR

- Press [▼] to enter video playback mode.
- Press [OK] to start/Pause playback.
- Press [MENU]/ again to exit playback mode.

Playback on PC

1. Remove memory card from DVR and insert it into computer's card reader.
(DVR's USB port data transmission OFF: for charging purpose only)
2. Connect DVR to PC
(DVR's USB port data transmission ON: for charging and data transmission)



There are two versions for DVR's port, please choose a method according real function

7. Specifications

7

Display	2.0", 960 x 240 pixels
Image sensor	OmniVision 4689 4.0PM 1/3
View angle	160°
Video resolution	2304x1296 (30fps), 2560x1080 (30fps), 1920x1080p (30 fps), 1280x720p(60 fps)
Photo resolution	16 MP
Video codec	H.264
Picture format	JPEG
Memory	Up to 64 GB (micro SD class 6 or 10 recommended)
Microphone	Built-in
Motion detection	Yes
G-sensor	Yes
Power source	Detachable rechargeable battery 180mAh, car charger
Interfaces	Micro USB
Dimension	56 x 65 x 30 mm (Lx W x D)
Weight	60g