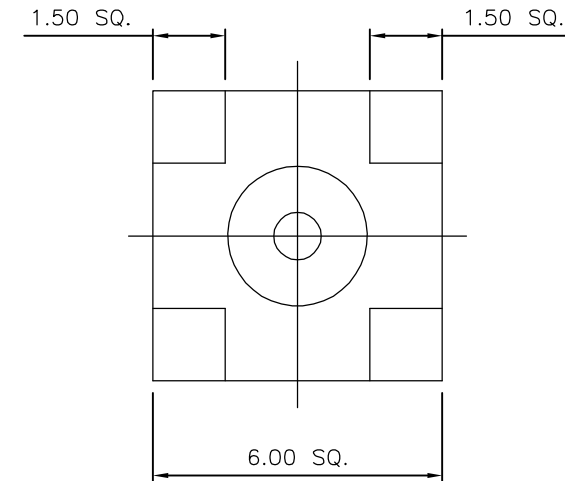
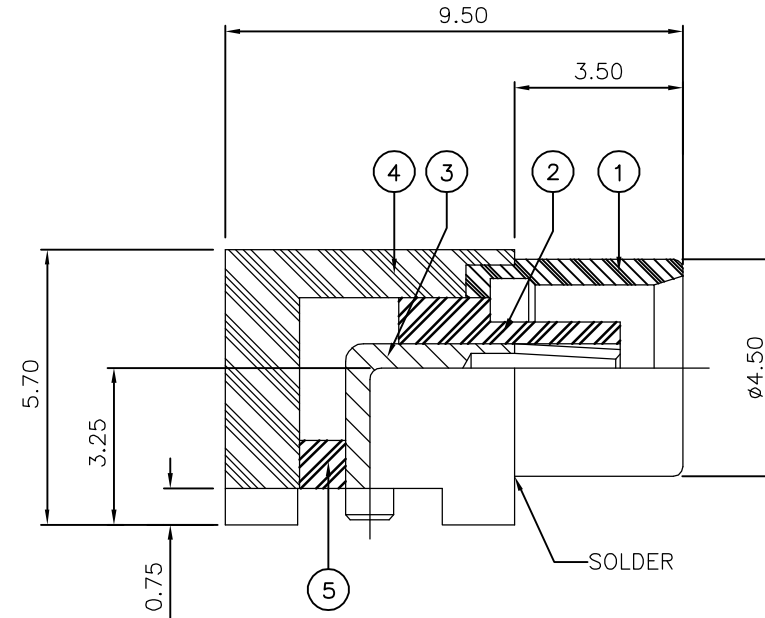


LOC	DIST	REVISIONS			
P	LTR	DESCRIPTION	DATE	DWN	APVD
E	B	C	ECR-06-002568	02FEB06	JMS FWK

**NOTES:**

- 1 PACK IN ACCORDANCE WITH AMP SPEC 107-3275
  - 2 100 TRAY PACK IN ACCORDANCE WITH AMP SPEC 107-3275
  - 3 Au PLATING
- 4 ELECTRICAL CHARACTERISTICS  
 FREQUENCY RANGE: DC - 6 GHz  
 NOMINAL IMPEDANCE: 50 Ohm  
 INSULATION RESISTANCE: 1000 MOhm  
 WORKING VOLTAGE: 335 Volts RMS at Sea Level  
 DIELECTRIC WITHSTAND VOLTAGE: 1000 Volts RMS Max  
 CONTACT RESISTANCE:  
 CENTRE CONTACT: 5.00 mOhm Max  
 OUTER CONTACT: 1.00 mOhm Max  
 VSWR @ 4GHz: N/A  
 INSERTION LOSS dB @ x 1.0 GHz: 0.10 Max
- 5 MECHANICAL CHARACTERISTICS  
 COUPLING NUT RETENTION FORCE: N/A  
 DURABILITY: 500 Cycles Min
- 6 ENVIRONMENTAL CHARACTERISTICS  
 OPERATING TEMPERATURE: -65 to +165 DegC



QTY	PLC	LTR	MATERIAL	DESCRIPTION	ITEM
1	1		PTFE	INSULATION 2	5
1	1		BRASS	BODY 2	4
1	1		BERYLLIUM COPPER	CONTACT	3
1	1		PTFE	INSULATION 1	2
1	1		BRASS	BODY 1	1
6--0	1--0		MATERIAL	DESCRIPTION	ITEM

THIS DRAWING IS A CONTROLLED DOCUMENT.		DWN J.SANDWELL 02FEB06		 Tyco Electronics Corporation Bideford EX39 4HE	
DIMENSIONS: mm		CHK S.PARLOW 02FEB06			
		APVD F.WHEELER-KING 02FEB06			
		PRODUCT SPEC			
MATERIAL SEE TABLE		FINISH		NAME MCX SURFACE MOUNT ELBOW PCB SOCKET 50 OHM	
		WEIGHT		SIZE A3	CAGE CODE 00779
				DRAWING NO C-1337583	
		CUSTOMER DRAWING		RESTRICTED TO	
				SCALE NTS	SHEET 1 OF 1 REV C