

Clairtronic Ltd.

93 Whitby Road Industrial Estate, Slough, Berks, UK. SL1 3DR
Telephone : +44 (0) 1753 692022 Fax : +44 (0) 1753 535096
e-mail: sales@clairtronic.com www.clairtronic.com



VARIABLE VOLTAGE TRANSFORMERS



A variable transformer is an efficient and trouble free method of varying AC voltages. The output voltage is varied by rotating a carbon tipped brush arm along a silver plated commutator, either manually or by means of a motor drive.

The voltage output can be varied from zero up to line voltage.

The variable transformers are available in single and three phase construction. Both open type or housed in a metal enclosure. The single phase variables are also available in a popular encapsulated style.

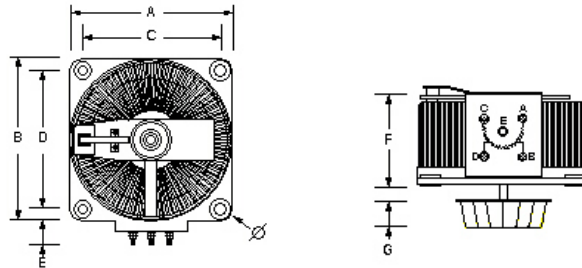
- No distortion of waveform
- Negligible maintenance
- Overload capacity
- Low magnetising current
- Smooth linear output
- High efficiency / excellent regulation
- Low operating torque
- Rugged Construction

Clairtronic Ltd.

93 Whitby Road Industrial Estate, Slough, Berks, UK. SL1 3DR
 Telephone : +44 (0) 1753 692022 Fax : +44 (0) 1753 535096
 e-mail: sales@clairtronic.com www.clairtronic.com

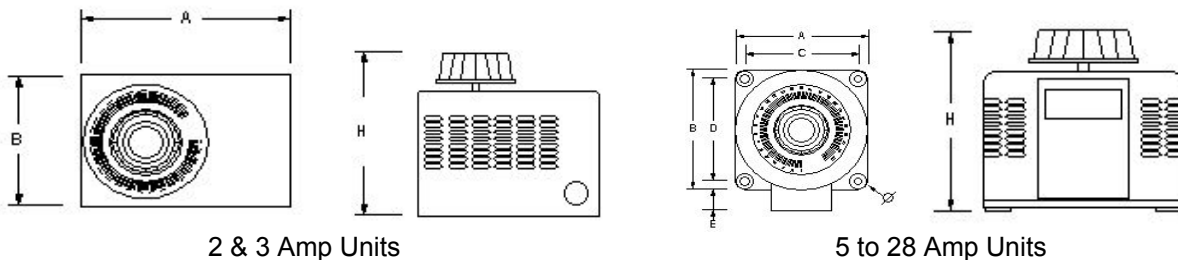


SINGLE PHASE OPEN TYPE



Part Number	Rating Amps	Dimensions (mm)								Weight (Kg)
		A	B	C	D	E	F	G	Ø	
10530	0.7	80	80	N/A	N/A	16	55	23	2xM4	1.25
10531	2.0	110	110	92	92	15	95	30	7	2.8
10532	3.0	110	110	92	92	15	115	30	7	3.4
10533	4.0	175	175	146	146	25	102	35	10	5.5
10534	5.0	175	175	146	146	25	130	35	10	8
10535	8.0	175	175	146	146	25	130	35	10	8
10536	10.0	175	175	146	146	25	135	35	10	8.5
10537	15.0	225	225	176	176	25	135	40	11	14.5
10538	20.0	225	225	176	176	25	135	40	11	16
10539	28.0	300	300	238	238	60	105	40	13	23

SINGLE PHASE ENCLOSED TYPE



2 & 3 Amp Units

5 to 28 Amp Units

Part Number	Rating Amps	Dimensions (mm)								Weight (Kg)
		A	B	C	D	E	H	Ø		
10550	0.7	160	130	N/a	N/a	N/a	160	N/a		
10551	2.0	160	130	N/a	N/a	N/a	160	N/a	3.8	
10552	3.0	160	130	N/a	N/a	N/a	160	N/a	4.5	
10553	4.0	175	175	146	146	35	140	10	6	
10554	5.0	175	175	146	146	35	140	10	7.8	
10555	8.0	175	175	146	146	35	170	10	8.7	
10556	10.0	175	175	146	146	35	170	10	9.2	
10557	15.0	225	225	176	176	40	190	11	16	
10558	20.0	225	225	176	176	40	190	11	18	
10559	28.0	300	300	238	238	70	225	13	26	

Clairtronic Ltd.

93 Whitby Road Industrial Estate, Slough, Berks, UK. SL1 3DR
Telephone : +44 (0) 1753 692022 Fax : +44 (0) 1753 535096
e-mail: sales@clairtronic.com www.clairtronic.com



PORTABLE UNIT



Part Number	Output Current
10590	5A
10591	10A

- 230/240V Single Phase Input
- Output voltage range 115% of input
- Power on indication lamp
- 1m 3-core input cable with BS1363A plug
- 3x 4mm shrouded output test sockets
- 13A output socket to BS1363A
- Voltmeter & Ammeter
- Input & output fuse protection
- 210 x 200 x 270mm (L x B x H)
- Output On/Off switch & Control Knob

BENCHTOP SUPPLY



Part Number	Output Current
10595	3A
10596	5A
10597	10A

- 230/240V Single Phase Input
- Output voltage range 112% of input
- Illuminated Power On/Off Switch
- 1m 3-core input cable with BS1363A plug
- 13A output socket to BS1363A
- Integral Safety Mains Tester
- Output On/Off switch & Control Knob
- Output protection fuse

Clairtronic Ltd.

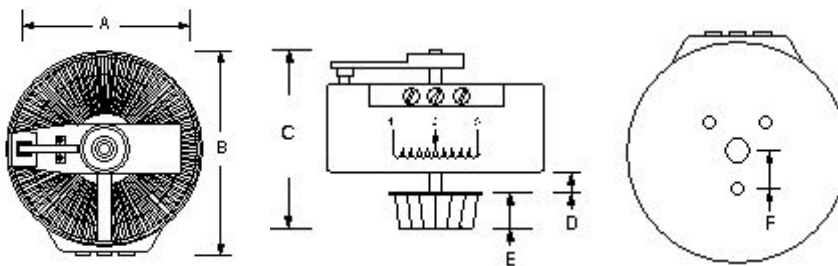
93 Whitby Road Industrial Estate, Slough, Berks, UK. SL1 3DR
 Telephone : +44 (0) 1753 692022 Fax : +44 (0) 1753 535096
 e-mail: sales@clairtronic.com www.clairtronic.com



SINGLE PHASE ENCAPSULATED TYPE



Part Number	Rating Amps	Dimensions (mm)							Weight (Kg)
		A	B	C	D	E	F	Ø	
10560	1.0	86	100	105	6	30	15	M3	1.75
10561	1.5	113	130	127	6	30	15	M3	2.75
10562	2.0	113	130	127	6	30	15	M3	3.25
10563	3.0	113	130	127	6	30	15	M3	3.75
10564	4.0	165	165	120	6	30	22.5	M6	6.5
10565	6.0	165	165	125	8	30	22.5	M6	7.5
10566	8.0	165	165	140	8	30	22.5	M6	8.5

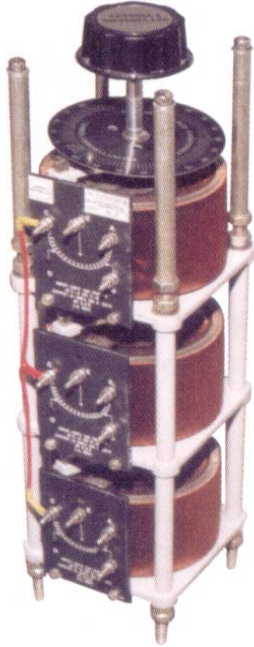


Clairtronic Ltd.

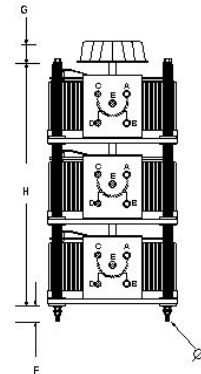
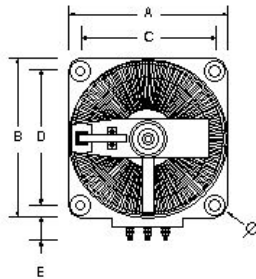
93 Whitby Road Industrial Estate, Slough, Berks, UK. SL1 3DR
 Telephone : +44 (0) 1753 692022 Fax : +44 (0) 1753 535096
 e-mail: sales@clairtronic.com www.clairtronic.com



THREE PHASE OPEN TYPE

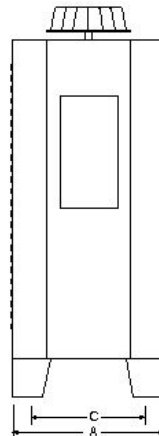
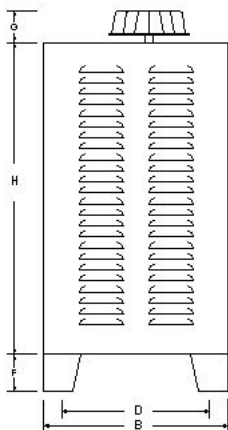


Part Number	Rating Amps	Dimensions (mm)									Weight (Kg)
		A	B	C	D	E	F	G	H	Ø	
10570	2.0	110	110	82	82	16	26	30	330	3	10
10572	4.0	176	176	148	148	26	30	60	410	10	20
10573	5.0	176	176	148	148	26	30	60	410	10	22
10574	8.0	176	176	148	148	26	30	60	410	10	28
10575	10.0	176	176	148	148	26	30	60	410	10	28
10576	15.0	226	226	178	178	26	40	60	426	11	48
10577	20.0	226	226	178	178	26	60	60	440	11	62
10578	28.0	300	300	288	288	80	60	60	627	18	87



THREE PHASE ENCLOSED TYPE

Part Number	Rating Amps	Dimensions (mm)								Weight (Kg)
		A	B	C	D	F	G	H	Ø	
10580	2.0	160	200	126	166	60	30	330	7	16
10582	4.0	200	260	186	216	30	60	426	8	30
10583	5.0	200	260	186	216	30	60	426	8	32
10584	8.0	200	260	186	216	30	60	426	8	38
10585	10.0	200	260	186	216	30	60	426	8	38
10586	15.0	260	300	210	280	40	60	446	11	66
10587	20.0	260	300	210	280	40	60	446	11	68
10588	28.0	260	460	286	386	80	60	646	18	86



Clairtronic Ltd.

93 Whitby Road Industrial Estate, Slough, Berks, UK. SL1 3DR
Telephone : +44 (0) 1753 692022 Fax : +44 (0) 1753 535096
e-mail: sales@clairtronic.com www.clairtronic.com

