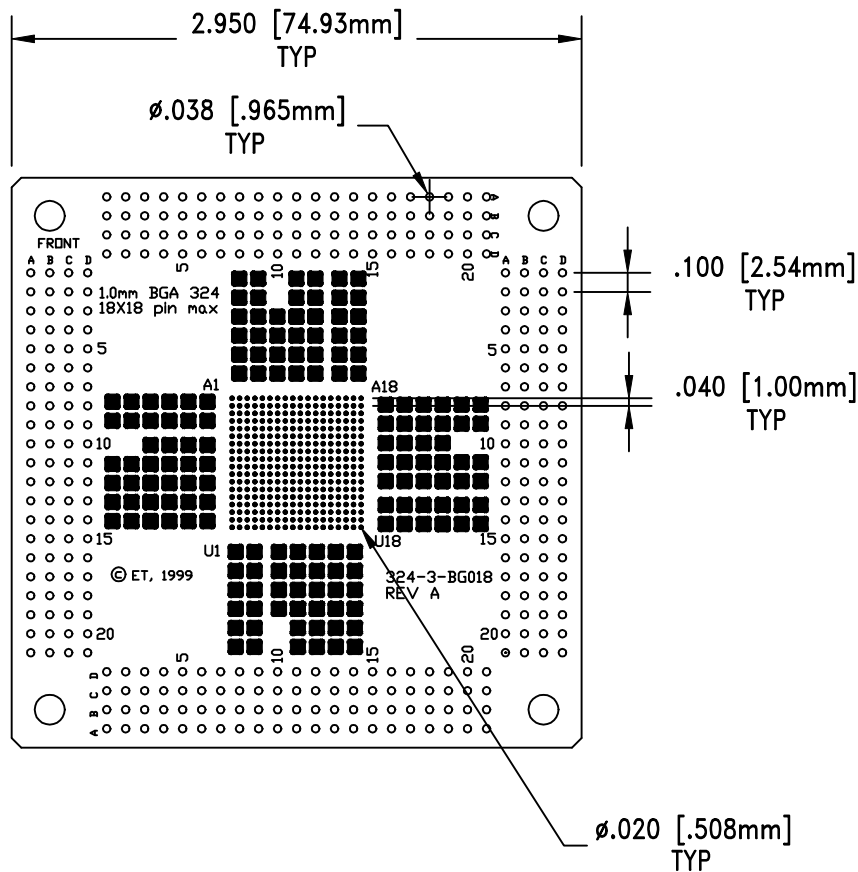
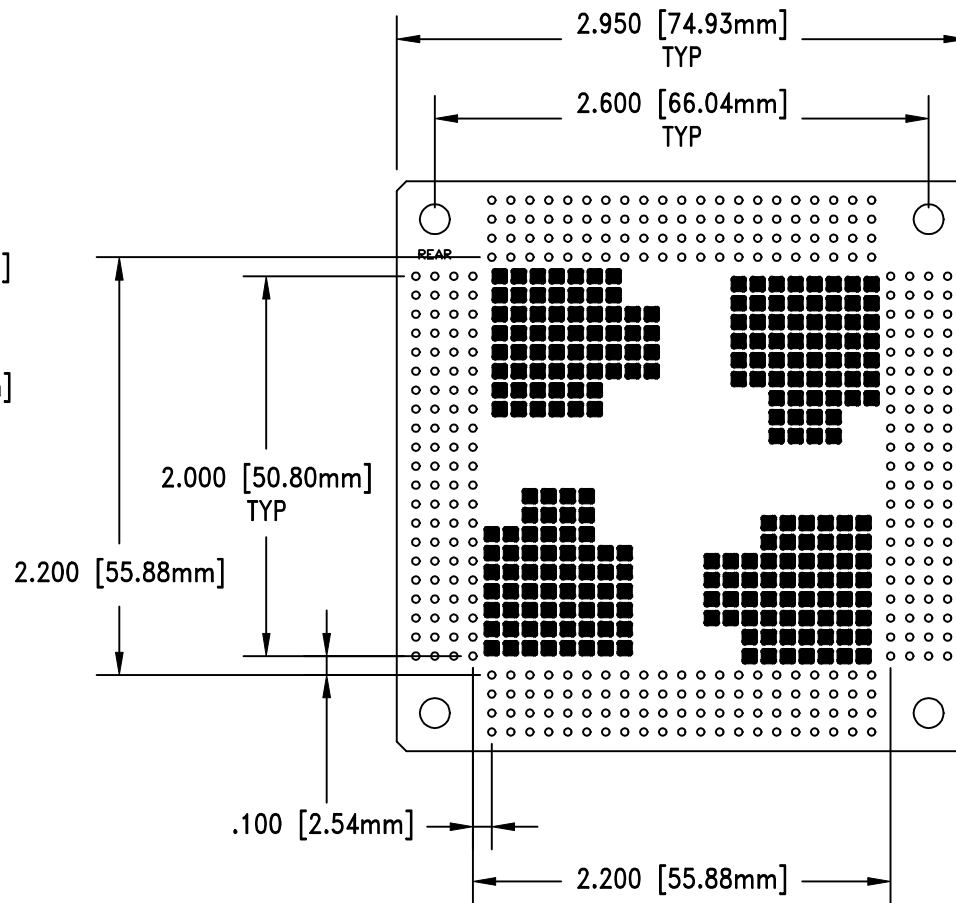


F5938

DOD 35938



TOP VIEW



BOTTOM VIEW

NOTES:

1. MATERIAL: FR-4
2. BOARD THICKNESS .062 INCHES
3. LEAD PITCH= 1.0mm
4. GRID SIZE= 18X18

ALL DIMENSIONS ARE IN INCHES UNLESS OTHERWISE SPECIFIED



Emulation Technology, Inc.
— VLSI and SMT ADAPTERS and ACCESSORIES —

2344 Walsh Avenue, Bldg. F
Santa Clara, Ca 95051

TEL:(408)982-0660
FAX:(408)982-0664

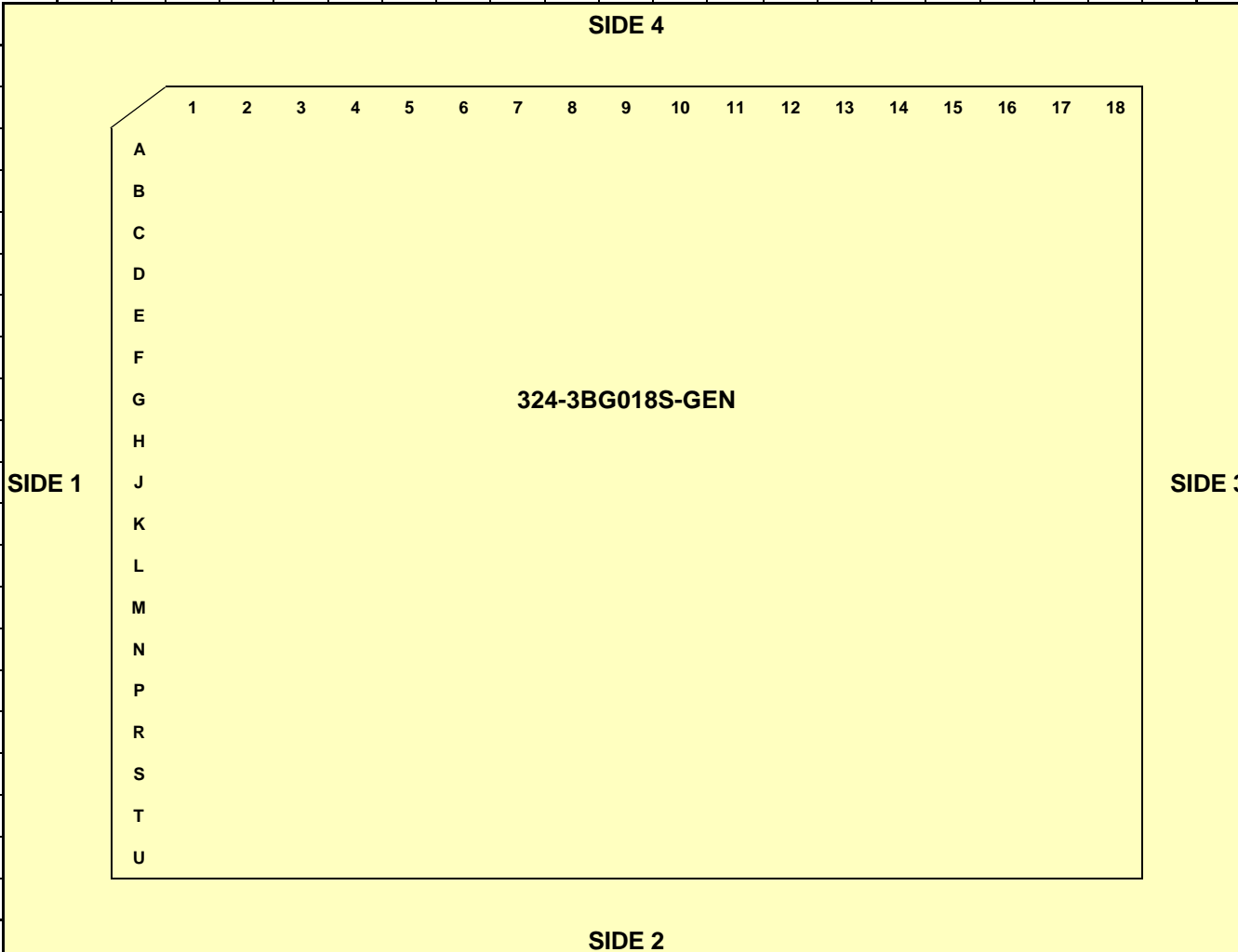
SHEET: 1 OF 1	DATE: 02-05-01	REVISION:	ASSEMBLY DRAWING
CHECKED: Paula Olson	DRAWN: Miguel Delgadillo	ITEM: 324-3BG018S-GEN	
DO NOT SCALE DRAWING			DESCRIPTION: 324-3BG018S-GEN

NO.	ITEM	DESCRIPTION	QTY.
1	324-3BG018S-GEN	BASE BOARD	1

PIN OUT

	1	2	3	4	5	6	7	8	9	10	11	12	13	14	15	16	17	18	19	20	21	
A	NC	B3	A4	A5	B6	D7	G8	C8	G9	C9	G10	C10	A11	E11	A12	E12	B13	F13	D14	C15	C16	A
B	NC	A3	D5	E6	A6	C7	F8	B8	F9	B9	F10	B10	B11	F11	B12	F12	C13	A14	E14	D15	A17	B
C	NC	C4	C5	D6	F7	B7	E8	A8	E9	A9	E10	A10	C11	G11	C12	G12	D13	B14	A15	A16	B17	C
D	A2	B4	B5	C6	E7	A7	D8	H9	D9	H10	D10	J10	D11	H11	D12	A13	E13	C14	B15	B16	A18	D

	A	B	C	D
1	C3	B1	B2	A1
2	D3	D4	C1	C2
3	E4	E5	D1	D2
4	F6	E1	E2	E3
5	F2	F3	F4	F5
6	G5	G6	G7	F1
7	G1	G2	G3	G4
8	H5	H6	H7	H8
9	H1	H2	H3	H4
10	J3	J2	J1	J9
11	J7	J6	J5	J4
12	K3	K2	K1	J8
13	K7	K6	K5	K4
14	L3	L2	L1	K8
15	L7	L6	L5	L4
16	M4	M3	M2	M1
17	N2	N1	M6	M5
18	P1	N5	N4	N3
19	R1	P4	P3	P2
20	S2	S1	R3	R2
21	NC	NC	NC	T1
	A	B	C	D



	A	B	C	D	
1	B18	NC	NC	NC	1
2	D17	D16	C18	C17	2
3	E17	E16	E15	D18	3
4	F16	F15	F14	E18	4
5	G14	G13	F18	F17	5
6	G18	G17	G16	G15	6
7	H15	H14	H13	H12	7
8	J11	H18	H17	H16	8
9	J15	J14	J13	J12	9
10	K11	J18	J17	J16	10
11	K15	K14	K13	K12	11
12	K10	K18	K17	K16	12
13	L15	L16	L17	L18	13
14	L11	L12	L13	L14	14
15	M15	M16	M17	M18	15
16	N18	M12	M13	M14	16
17	N14	N15	N16	N17	17
18	P16	P17	P18	N13	18
19	R17	R18	P14	P15	19
20	S17	S18	R15	R16	20
21	U18	T17	T18	S16	21
	A	B	C	D	

	D	C	B	A																		
D	U1	T3	T4	S5	P6	U6	R7	L8	R8	K9	R9	L9	R10	L10	R11	U12	P12	S13	T14	T15	U17	D
C	T2	U3	U4	T5	R6	M7	S7	M8	S8	U9	P9	U10	P10	U11	P11	T12	N12	R13	S14	S15	NC	C
B	U2	R4	P5	U5	S6	N7	T7	N8	T8	T9	N9	T10	N10	T11	N11	S12	U13	P13	R14	U16	NC	B
A	S3	S4	R5	N6	T6	P7	U7	P8	U8	S9	M9	S10	M10	S11	M11	R12	T13	U14	U15	T16	NC	A
	1	2	3	4	5	6	7	8	9	10	11	12	13	14	15	16	17	18	19	20	21	