

DRG. No.
N. 602 ETC.

FIRST ANGLE PROJECTION

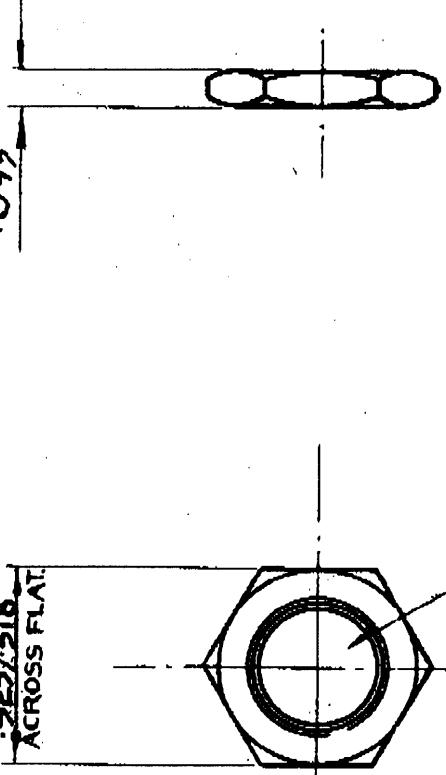
N. 768ADP

12

17-5

$.225 \pm .018$
ACROSS FLAT

$.093$ "



THREAD TO B.S. 84 (MED)
.775" DIA. SEE TABLE
FOR T.P.I. SLIGHTLY C/SK.
HOLE.

SUGGESTED TIGHTENING
TORQUE 35 lb in.

| ISS. | C.N.N. | ALTERATIONS | SIG & DATE |
|------|--------|--|-------------|
| 4 | — | RE-DRAWN NO CHANGE | SEA 12-6-58 |
| 5 | 2056 | SPEC. ADDED TO THREAD | 3-6-59 |
| 6 | — | RE-DRAWN NO CHANGE | FED 3-2-61 |
| 7 | — | MIN. SIZE - .0005 | REVISION |
| 8 | 7803 | 5/8" DIA WAS 5/16" | 10-20-61 |
| 9 | 8470 | FINISH TO HEAD WAS 32 T.P.I. WAS 32 T.P.I. | 11-20-61 |
| 10 | 8659 | N. 602 SPEC. WAS 32 T.P.I. WAS 32 T.P.I. | 6-1-62 |
| 11 | 8683 | PLATE (N. 602 & N. 602) | 4-11-60 |

| PART NR | THREAD | MATERIAL | FINISH |
|-----------|-----------|------------|--------------------------------------|
| N. 602 | 32 T.P.I. | BRASS | NICKEL PLATE |
| N. 602 A. | 26 T.P.I. | BRASS | NICKEL PLATE |
| N. 602 D | 32 T.P.I. | DURALUMIN | CLEAN |
| N. 602 AD | 26 T.P.I. | DURALUMIN | CLEAN |
| N. 656 | 32 T.P.I. | DURALUMIN | ANODIZED TO COLVERN SPEC SLOOS |
| N. 676 | 26 T.P.I. | BRASS | NICKEL PLATE TO SF. 003 |
| N. 685 | 32 T.P.I. | MILD STEEL | NICKEL PLATE TO SF. 020 |
| N. 695 | 32 T.P.I. | DURALUMIN | ANODIZED TO COLVERN SPEC SLOOS |
| N. 697 | 32 T.P.I. | BRASS | ELECTRO-TIN D.T.D. 924 |
| N. 697 A | 26 T.P.I. | BRASS | ELECTRO-TIN D.T.D. 924 |
| N. 722 | 32 T.P.I. | BRASS | CARBON PLATE TO COLVERN MI. C. SLOOS |
| N. 768 | 32 T.P.I. | BRASS | CLEAN TO SF. 011 |

| REDRAWN | CHECKED | APPROVED | DATE |
|------------------------|---------|---------------------------------------|----------|
| F. E. D. | J. G. | | 3-2-61 |
| MATERIAL: SEE TABLE | | FINISH: SEE TABLE | |
| TITLE 375 LOCK NUT | | | DRG. No. |
| USED ON | | N. 602 ETC. | |
| | | COLVERN LTD., MAWNEYS RD., ROMFORD | |

TOLERANCES
DECIMALS: ± .001"
FRACTIONS: ± 1/64"
UNLESS OTHERWISE STATED

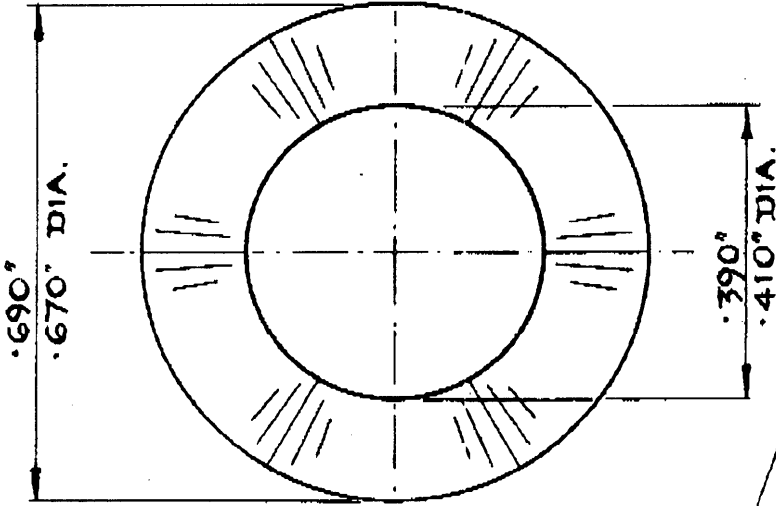
SCALE
2:1

DIMENSIONS IN INCHES

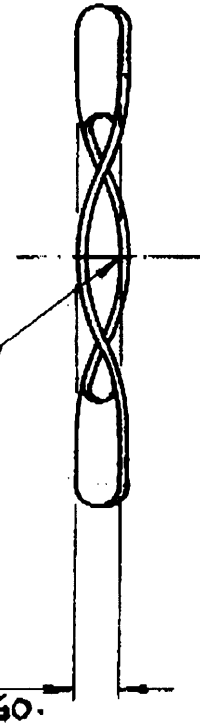
N. 602-141418

PART No.
W.1015

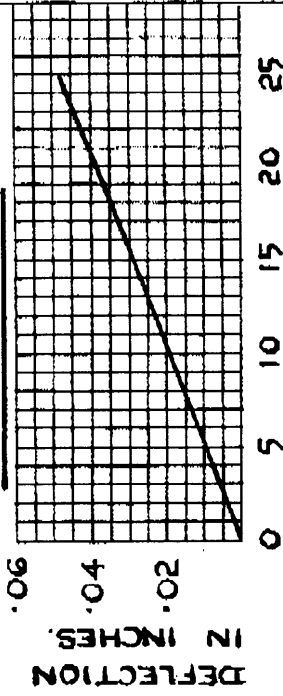
FIRST ANGLE PROJECTION



3-CORRUGATIONS
EQUALLY SPACED.
CURVATURE OF
CRESTS & TROUGHS
TO BE EQUAL.



SPRING DATA.



LOAD IN POUNDS ± 10%

| ALTERATIONS | | |
|-------------|----------|---------------------------|
| ISS. | C.N. No. | ALTERNATION |
| 4 | 8171 | ALTERNATIVE MATS BELIEVED |
| 5 | 8869 | BRONZE WAS PD |

| SIG. & DATE | |
|-------------|---------|
| DESIGNED BY | 16-1-78 |
| CHECKED BY | 16-1-78 |
| APPROVED BY | 16-1-78 |

| DRAWN | CHECKED | APPROVED | DATE |
|----------|---------|----------|---------|
| F. E. D. | | | 16-1-78 |

MATERIAL: .0108 THK (32-SWG) PHOS. BRONZE
FINISH: NICKEL PLATE.

TITLE: 3/8 WAVY WASHER W.1015 PART No.

USED ON: COLVERN LTD., ROMFORD, ESSEX.

JOINT SERVICE CAT.

NO 5310-Z-119097

DIMENSIONS IN INCHES

SCALE

4:1

TOLERANCES

DECIMALS: ± .005
FRACTIONS: ± 1/64

UNLESS OTHERWISE STATED

GAF 430874

REV. 8. 16-1-78

REV. 5. 16-1-78

REV. 4. 16-1-78

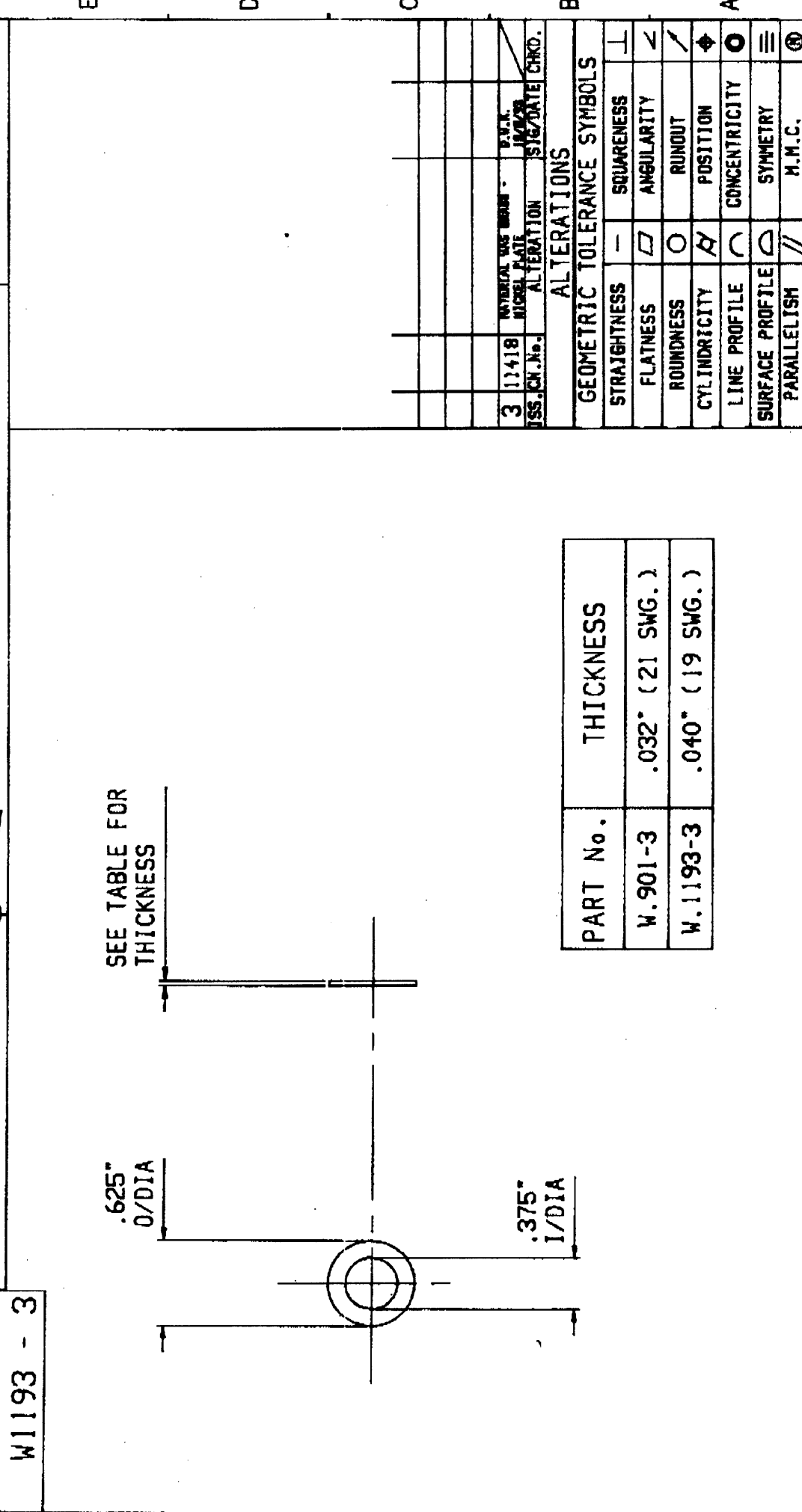
SCRAP

REV. 3. 16-1-78

REV. 2. 16-1-78

DRG. NO. W901 - 3
 W1193 - 3

THIRD ANGLE PROJECTION IF IN DOUBT ASKI



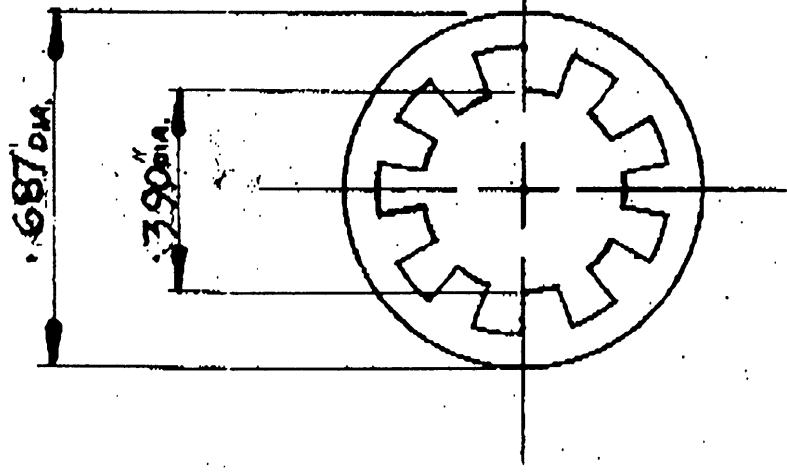
SEE TABLE FOR THICKNESS

| PART No. | THICKNESS |
|----------|-----------------|
| W.901-3 | .032" (21 SWG.) |
| W.1193-3 | .040" (19 SWG.) |

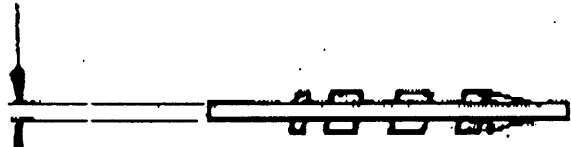
| GAUGING DIMENSIONS IDENTIFIED BY THIS SYMBOL | | DIMENSIONS IN INCHES | | GROSS MATERIAL | |
|--|--|---|--|---|--|
| © 1993 COLVERN LTD. THIS DRAWING IS THE PROPERTY OF COLVERN LTD. WITHOUT WHOSE WRITTEN PERMISSION IT MUST NOT BE COPIED, REPRODUCED, REISSUED OR DISCLOSED TO A THIRD PARTY. C.A.D. DRAWING. ANY ALTERATIONS MUST BE CARRIED OUT ON THE C.A.D. SYSTEM ONLY | | TOLERANCES DECIMALS +/- .005" FRACTIONS +/- 1/64" ANGLES +/- 1° UNLESS OTHERWISE STATED | | B.O. SCALE PT760 OPERATION TOOL No. TITLE A4 3/8" WASHER | |
| WILD STEEL | | FINISH BRIGHT ZINC PLATE & CLEAR PASSIVATE | | D.M.N. 18/8/98 DRAWN DATE ROMFORD ESSEX DRG. NO. W901 - 3 W1193 - 3 | |

10 9 8 7 6 5 4 3 2 1

PART No.
W 902



.035



.063" over
Teeth
per check
on 10 samples

ALTERATIONS

| ISS. | C.N.No. | ALTERATION | ISS. & DATE |
|------|---------|---------------------------------|-------------|
| 2 | 269 | REBRASSIN UP TO DATE | 3/1/54 |
| 3 | 279 | FINISH WITH RING DATE PASSENGER | 12/1/71 |

| DRAWN | CHECKED | APPROVED | DATE |
|------------------------------|---------|--------------------------------------|---------|
| P. J. Wapling | Sheach | Sheach | 28:1:52 |
| MATERIAL:- STEEL | | FINISH:- NICKEL PLATE | |
| 375 DIA. SKINPROOF WASHER | | PART No. W 902 | |
| USED ON | | COLLYER LTD. MAWNEYS RD., ROMFORD | |

PURCHASED FROM BARBER & COLMAN
TYPE 1P - No 1220

GENERAL TOLERANCE = 10%
UNLESS OTHERWISE STATED

SCALE
2:1