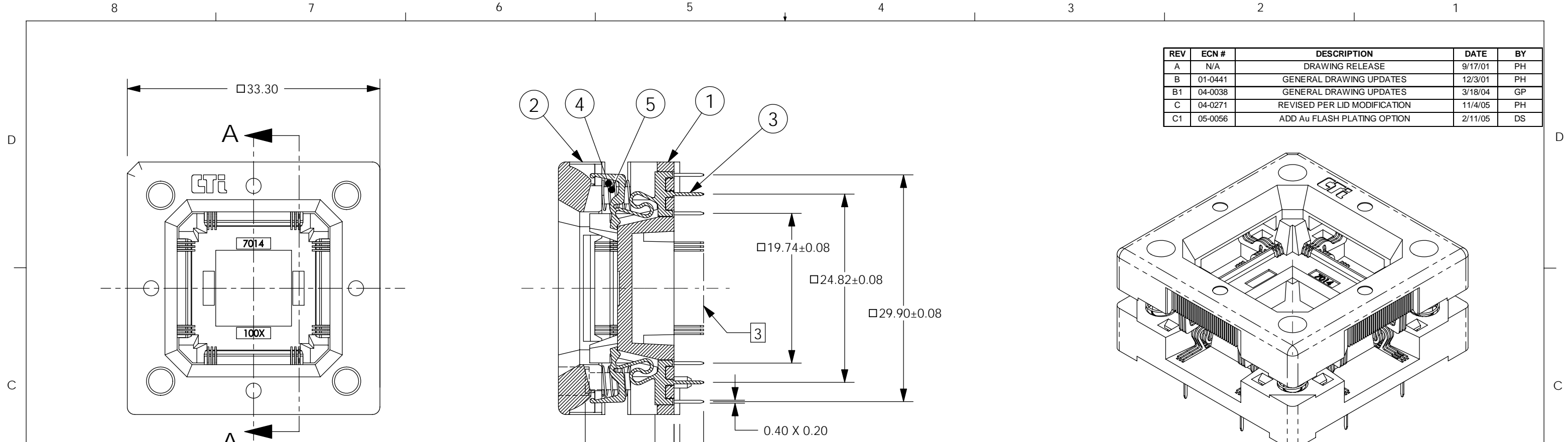
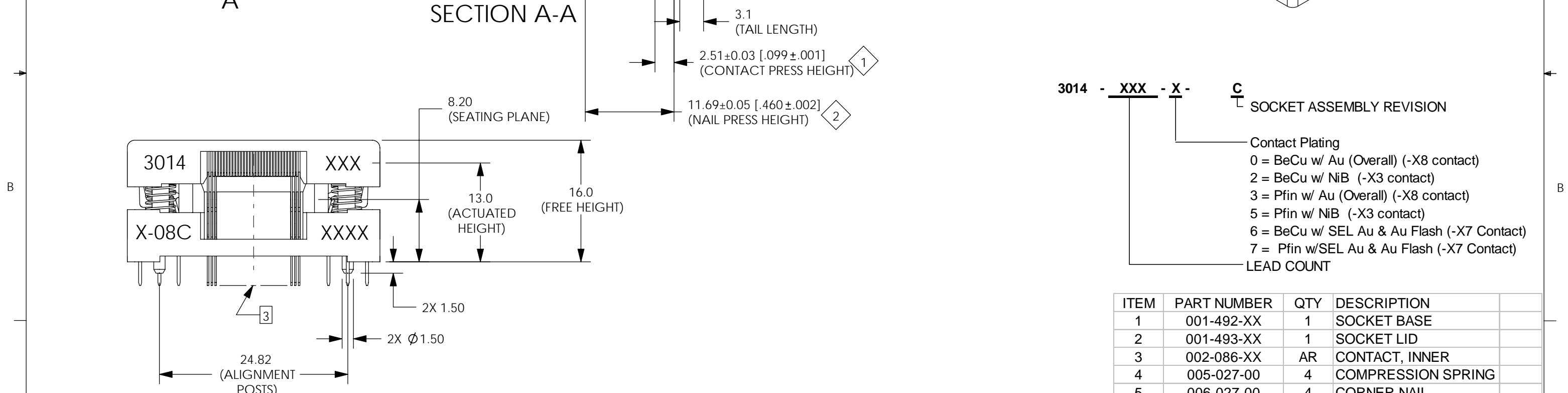


REV	ECN #	DESCRIPTION	DATE	BY
A	N/A	DRAWING RELEASE	9/17/01	PH
B	01-0441	GENERAL DRAWING UPDATES	12/3/01	PH
B1	04-0038	GENERAL DRAWING UPDATES	3/18/04	GP
C	04-0271	REVISED PER LID MODIFICATION	11/4/05	PH
C1	05-0056	ADD Au FLASH PLATING OPTION	2/11/05	DS



SECTION A-A



3014 - XXX - X - C

SOCKET ASSEMBLY REVISION

Contact Plating

- 0 = BeCu w/ Au (Overall) (-X8 contact)
- 2 = BeCu w/ NiB (-X3 contact)
- 3 = Pfin w/ Au (Overall) (-X8 contact)
- 5 = Pfin w/ NiB (-X3 contact)
- 6 = BeCu w/ SEL Au & Au Flash (-X7 Contact)
- 7 = Pfin w/SEL Au & Au Flash (-X7 Contact)

LEAD COUNT

ITEM	PART NUMBER	QTY	DESCRIPTION
1	001-492-XX	1	SOCKET BASE
2	001-493-XX	1	SOCKET LID
3	002-086-XX	AR	CONTACT, INNER
4	005-027-00	4	COMPRESSION SPRING
5	006-027-00	4	CORNER NAIL

- 4. THIS DRAWING DOES NOT INCLUDE 0.40MM PITCH SOCKETS.
- 3 SOCKET IS POPULATED PER DWG. F3014-XXX, XXX = LEAD COUNT, CONTACTS REMOVED FOR CLARITY.
- 2 MARKING: 2.0 HIGH, COLOR - WHITE. LOCATE AS SHOWN.
- 1 MATERIAL AND FINISH:
 SOCKET LID AND BASE - POLYETHERIMIDE.
 CONTACTS - PFINODAL, SEE CHART FOR PLATING.
 NAILS AND SPRINGS - STAINLESS STEEL - PASSIVATED.

LEGEND		MATERIAL / FINISH		DRAWN		DATE		WELLS-CTI	
◇	CRITICAL	1		PH	9/17/01				
2	TOTAL NO. OF ◇ USED			EO	9/17/01				
INTERPRET DRAWING IN ACCORDANCE WITH ASME Y14.5M-1994		PROJECT / SERIES	QUALITY	ENGINEER	DATE	TITLE			
SIZE	PROJECTION	3014	EP	PH	9/17/01	REDUCED FORCE QFP 14mm SQ. PACKAGE FAMILY			
B		TOLERANCES	MFG. ENGR.	AG	9/17/01	DRAWING NUMBER		REV.	
		X.XX ± 0.3 X.XXX ± 0.13 X.XXXX ± 0.05 ANGLE ± 1°				3014-XXX-X-08		C1	
DO NOT SCALE						SCALE	2:1	UNITS: in [mm]	
						CAD NUMBER	3014-XXX-X-08.SLDDRW	SHEET	1 OF 1