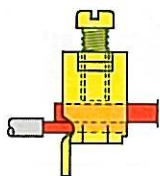
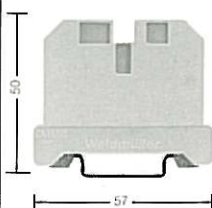


Earth Terminals Type EK Screw Clamp Connections

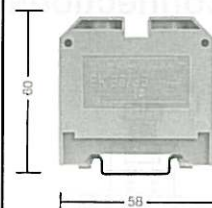


**EK 16/35
87A**



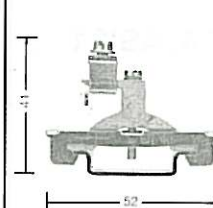
Thickness 12mm

**EK 35/35
143A**



Thickness 16mm

**EK 16/35
87A**



Thickness 8mm

Technical Data

Conductor size	Solid (mm ²)	2.5-16	6-16	2.5-16
	Stranded (mm ²)	4-16	6-35	4-16

Insulation stripping length (mm)	12	20	12
----------------------------------	----	----	----

Ordering Data

Moulding material	Polyamide (green/yellow)	Cat. No. 019016	Cat. No. 066146	Cat. No. 066040
	Mild steel			

Approvals

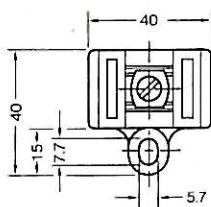
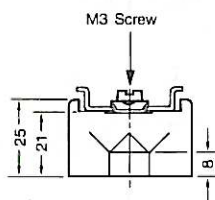
All Approvals are listed in Approvals Section

Terminal Rail (2m)

	Type	Cat. No.	Type	Cat. No.	Type	Cat. No.
Steel 35 x 7.5mm	TS 35	038340	TS 35	038340	TS 35	038340
Steel 35 x 7.5mm (M6 Slots)	TS 35	067620	TS 35	067620	TS 35	067620
Steel 35 x 15mm	TS 35	049800	TS 35	049800	TS 35	049800

Rail Support Block

Melamine	SH 2	049492	SH 2	049492	SH 2	049492
----------	------	--------	------	--------	------	--------



Marking Tags

All marking systems are shown in Section 11	DEKAFIX – Section 11	DEKAFIX – Section 11	DEKAFIX – Section 11
---	----------------------	----------------------	----------------------

For additional accessories see Section 11