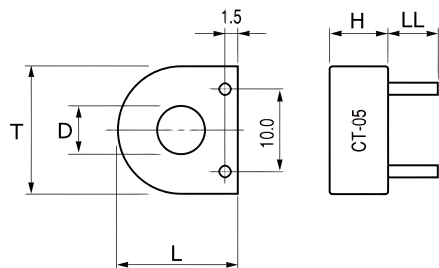


KEMET, CT



General Information	
Series:	CT
Type:	Current Sensors
Style:	Radial
Description:	Low Alternating Current Sensor
Features:	Overcurrent/Current Detection, High Sensitivity, High Performance
Lead:	Wire Leads
RoHS:	Yes
Notes:	0.6 mm Diameter Pin Connectors

Dimensions	
D	5.5mm
L	17.5mm +/-0.4mm
H	10mm
T	17.5mm +/-0.4mm
LL	10mm +/-0.1mm

Specifications	
Miscellaneous:	Materials = Phenolic Resin Case, Epoxy-Filled

Packaging Specifications	
Packaging:	Bulk, Box
Packaging Quantity:	1200