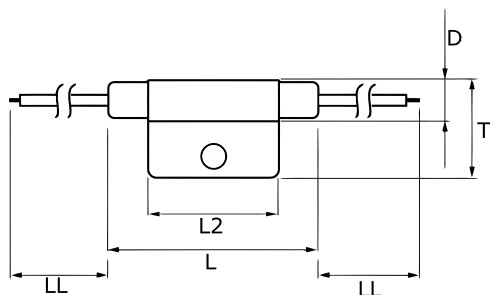


## KEMET, TRS



## Dimensions

D	8.2mm MAX
L	50mm MAX
L2	29mm MAX
T	20mm MAX
LL	200mm

## Packaging Specifications

Packaging:	Bulk, Rubber Band
Packaging Quantity:	600

## General Information

Series:	TRS
Type:	Thermal Sensors
Style:	Axial
Description:	Thermal Reed Switch
Features:	High Reliability, High Temperature Accuracy
Lead:	Cables
RoHS:	Yes
Approvals:	UL, CSA

## Specifications

Rated Temperature:	100C
Rated Temperature Tolerance:	+/-2.5C
Temperature Range:	-10/+130C
Voltage DC:	200 VDC MAX (Opening/Closing)
Voltage AC:	140 VAC MAX (Opening/Closing)
Current:	0.55 Amps AC/DC MAX (Opening/Closing)
Miscellaneous:	Differential Temperature = 10C MAX. Reed Switch Type For 100 V. Power = 60.5W AC/10W DC MAX (Opening/Closing)