

Ferrule - AI-TWIN 2X 0,75- 8 GY - 3200807

Please be informed that the data shown in this PDF Document is generated from our Online Catalog. Please find the complete data in the user's documentation. Our General Terms of Use for Downloads are valid (<http://phoenixcontact.com/download>)




Ferrules, for two 0.75 mm² conductors, sleeve length: 8 mm, with plastic collar, galvanically tin-plated, color: gray, color range according to NF C 63-023, CSA-certified

Why buy this product

- ✓ Different versions of the individual TWIN ferrules can be selected for specific applications
- ✓ The TWIN ferrules provide a practical way of crimping two conductors in one ferrule
- ✓ These special ferrules allow chain bridges to be set up with ease

Key Commercial Data

| | |
|--------------------------------------|---|
| Packing unit | 100 STK |
| Minimum order quantity | 100 STK |
| GTIN |  4 017918 094355 |
| GTIN | 4017918094355 |
| Weight per Piece (excluding packing) | 0.133 g |
| Custom tariff number | 85369010 |
| Country of origin | Germany |
| Sales Key | 05 |

Technical data

Dimensions

| | |
|--|---------|
| Length (b) | 15 mm |
| Maximum stripping length | 12 mm |
| Sleeve length | 8 mm |
| Inner dimension of the insulating collar (d) | 2.8 mm |
| Ferrule diameter | 1.8 mm |
| Insulating collar thickness | 0.25 mm |
| Sleeve wall thickness | 0.15 mm |

Ambient conditions

Ferrule - AI-TWIN 2X 0,75- 8 GY - 3200807

Technical data

Ambient conditions

| | |
|----------------------------|---|
| Short-term temperature | 120 °C |
| Max. permanent temperature | 105 °C (-40°C no load / 0°C dynamic load) |

General

| | |
|--|--------------------------------|
| Color | gray |
| Components | free from silicone and halogen |
| Flammability rating according to UL 94 | HB |
| Material | E-CU |
| Coating | tin-plated (galvanic) |

Standards and Regulations

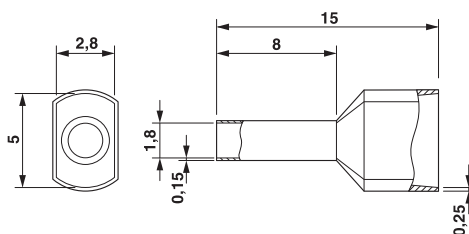
| | |
|--|-----|
| Connection in acc. with standard | CSA |
| Flammability rating according to UL 94 | HB |

Environmental Product Compliance

| | |
|------------|---|
| China RoHS | Environmentally friendly use period: unlimited = EFUP-e |
| | No hazardous substances above threshold values |

Drawings

Dimensional drawing



Classifications

eCl@ss

| | |
|------------|----------|
| eCl@ss 4.0 | 27060701 |
| eCl@ss 4.1 | 27060701 |
| eCl@ss 5.0 | 27400201 |
| eCl@ss 5.1 | 27400201 |
| eCl@ss 6.0 | 27400201 |
| eCl@ss 7.0 | 27400201 |
| eCl@ss 8.0 | 27400201 |
| eCl@ss 9.0 | 27400201 |

ETIM

| | |
|----------|----------|
| ETIM 2.0 | EC000005 |
|----------|----------|

Ferrule - AI-TWIN 2X 0,75- 8 GY - 3200807

Classifications

ETIM

| | |
|----------|----------|
| ETIM 3.0 | EC000005 |
| ETIM 4.0 | EC000005 |
| ETIM 5.0 | EC000005 |
| ETIM 6.0 | EC000005 |

UNSPSC

| | |
|---------------|----------|
| UNSPSC 6.01 | 30212109 |
| UNSPSC 7.0901 | 27121703 |
| UNSPSC 11 | 27121703 |
| UNSPSC 12.01 | 27121703 |
| UNSPSC 13.2 | 27121703 |

Approvals

Approvals

Approvals


CSA / CSAus / EAC / EAC / UL Listed / cUL Listed / cULus Listed


Ex Approvals

Approval details

| | | | |
|-----|---|---|--------|
| CSA |  | http://www.csagroup.org/services-industries/product-listing/ | 247397 |
|-----|---|---|--------|


| | | | |
|-------|---|---|--------|
| CSAus |  | http://www.csagroup.org/services-industries/product-listing/ | 247397 |
|-------|---|---|--------|


| | | | |
|-----|---|--|---------------|
| EAC |  | | EAC-Zulassung |
|-----|---|--|---------------|


| | | | |
|-----|---|--|---------------------|
| EAC |  | | 7500651.22.01.00246 |
|-----|---|--|---------------------|

Ferrule - AI-TWIN 2X 0,75- 8 GY - 3200807

Approvals

| | | | |
|-----------|---|---|---------|
| UL Listed |  | http://database.ul.com/cgi-bin/XYV/template/LISEXT/1FRAME/index.htm | E488001 |
|-----------|---|---|---------|

| | | | |
|------------|---|---|---------|
| cUL Listed |  | http://database.ul.com/cgi-bin/XYV/template/LISEXT/1FRAME/index.htm | E488001 |
|------------|---|---|---------|

| | | | |
|--------------|---|---|--|
| cULus Listed |  | http://database.ul.com/cgi-bin/XYV/template/LISEXT/1FRAME/index.htm | |
|--------------|---|---|--|