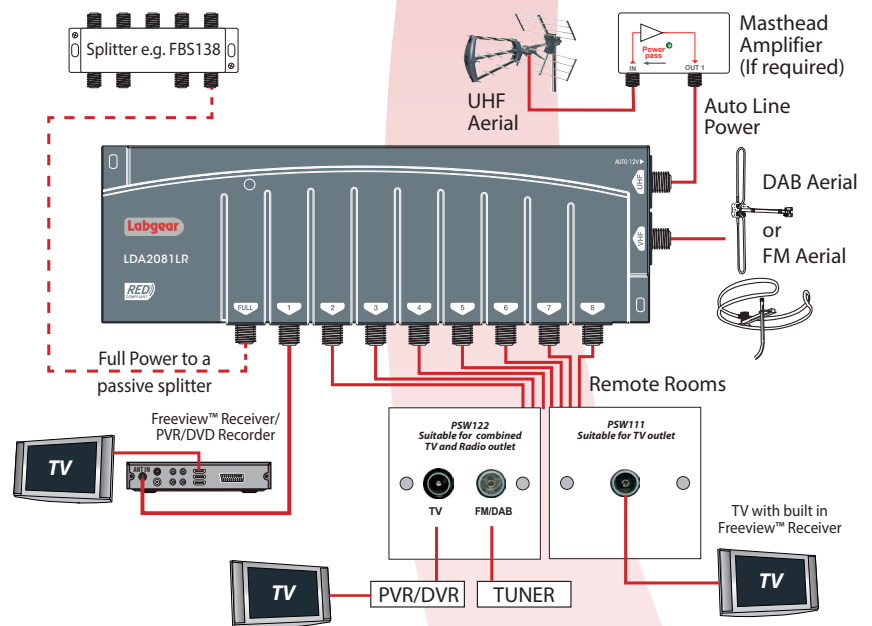
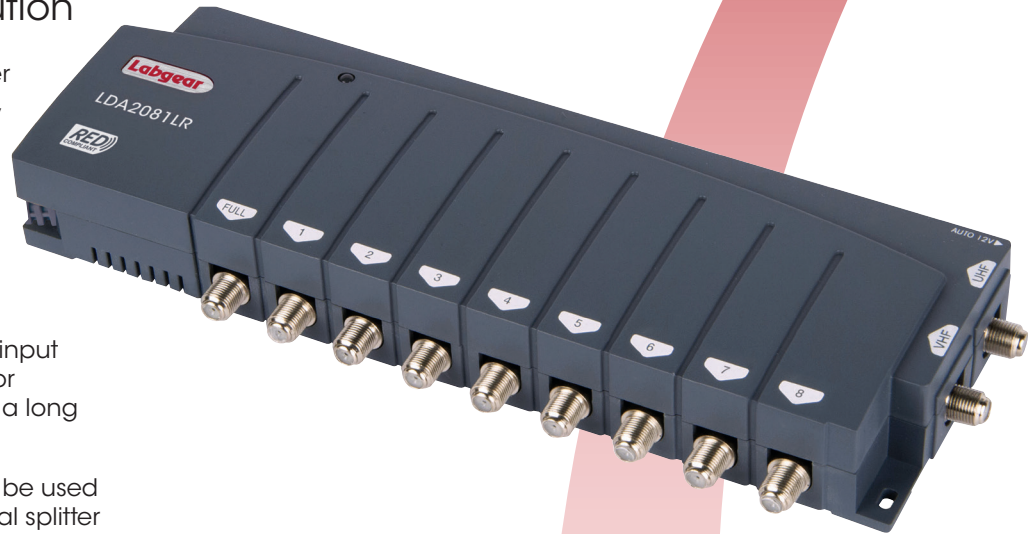


8 Way Distribution Amplifier

Ideal for distributing TV/FM/DAB signals for 8 TVs & high level output for further distribution

This fully screened distribution amplifier carries analogue/digital TV and radio, FM/DAB, Freeview, DVB-T and DVB-T2 HD TV signals and has:

- Separate inputs for VHF (Band III TV, FM and DAB digital radio) and UHF (Freeview, DVB-T and DVB-T2 HD digital TV)
- Automatic line powering on the UHF input to power a masthead pre-amplifier for fringe reception areas or if you have a long cable run from aerial to amplifier.
- FULL (17dB) output which can either be used for very long cable runs or via a signal splitter to feed up to 8 further points.
- A built-in Class 3 4G filter providing 45dB interference protection
- More efficient Switch-Mode Power Supply which runs cooler
- Improved gain flatness delivering a better balance across the performance range
- Lower noise figure for optimised signal quality
- Greater signal handling capacity to cope with more channels
- Better impedance matching and therefore improved signal transfer from amp to cable
- Compliant with the Radio Equipment Directive 2014/53/EU* and meets harmonised standard EN 303 354 for product Type D, Class 3



Please Note:

1. If the "FULL" power socket is not being used it must be terminated with the 75Ω terminator supplied.
2. This amplifier does not have an IR return path to enable channel changing from remote locations and also due to the 4G filter does not receive channel 60.
3. If you need to receive channel 60 and or wish to control remote TVs we recommend the Labgear LDL DigiLink Class 0 range of amplifiers with IR digital bypass.

***Declaration of Conformity**

Hereby, Labgear declares that the radio equipment: Amplifier for TV broadcast reception in domestic premises is in compliance with the Radio Equipment Directive 2014/53/EU. The full text of the EU Declaration of Conformity is available at the following internet address: www.labgear.co.uk/DoC

Specifications	LDA2081LR
No of Inputs/Outputs	2/8 + Full
Frequency Range	VHF 87-230MHz, UHF 470-782MHz
Gain per port	10dB/17dB Full
Gain flatness	+/-1 dB
Noise Figure	Typical <3.0dB
4G protection Class 3	Typical -45dB
Isolation between outlets	20dB
Max. output level (IMA3 -60dB)	85dBμV
Return loss Input/Output	12dB/9dB
Auto Line Power on UHF	12V≈50mA
RED, EMC and LVD	Compliant
Built-in Power Supply	220V~50hz <3W
Dimensions	265 x 95 x 35mm