

**PLEASE CHECK WWW.MOLEX.COM FOR LATEST PART INFORMATION**

**Part Number:** **5056061000**  
**Status:** **Active**  
**Overview:** CP Wire-to-Board and Wire-to-Wire Connector Systems  
**Description:** CP-3.3 Plug Housing, 3.30mm Pitch, Dual Row, Polarized, Positive Inertia Lock, 10 Circuits, Natural

**Documents:**

<a href="#">Drawing (PDF)</a>	<a href="#">Packaging Specification 5056069200-200 (PDF)</a>
<a href="#">Product Specification 5056050000-000 (PDF)</a>	<a href="#">RoHS Certificate of Compliance (PDF)</a>
<a href="#">Application Specification 5056050000-A00 (PDF)</a>	<a href="#">Product Literature (PDF)</a>
<a href="#">Application Specification 5056050000-A01 (PDF)</a>	

**General**

Product Family	Crimp Housings
Series	<a href="#">505606</a>
Application	Signal, Wire-to-Wire
Overview	<a href="#">CP Wire-to-Board and Wire-to-Wire Connector Systems</a>
Product Literature Order No	987651-6581
Product Name	CP-3.3
UPC	889056804509

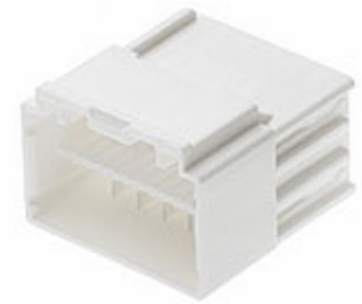
**Physical**

Circuits (maximum)	10
Color - Resin	Natural
Gender	Plug
Glow-Wire Compliant	No
Keying to Mating Part	Yes
Lock to Mating Part	Yes
Material - Resin	PBT
Net Weight	3979.000/mg
Number of Rows	2
Packaging Type	Bag
Panel Mount	No
Pitch - Mating Interface	3.30mm
Pitch - Termination Interface	3.30mm
Polarized to Mating Part	Yes
Stackable	No
Temperature Range - Operating	-40°C to +105°C

**Material Info**

**Reference - Drawing Numbers**

Application Specification	5056050000-A00, 5056050000-A01
Packaging Specification	5056069200-200
Product Specification	5056050000-000
Sales Drawing	5056060000-000



*Series image - Reference only*

**EU ELV**

**Not Relevant**

**EU RoHS**

**Compliant**

**REACH SVHC**

Not Contained Per -  
ED/30/2017 (7 July  
2017)

**Halogen-Free**

**Status**

**Not Low-Halogen**

**Need more information on product environmental compliance?**

Email [productcompliance@molex.com](mailto:productcompliance@molex.com)  
Please visit the [Contact Us](#) section for any non-product compliance questions.

China ROHS

ELV

RoHS Phthalates

Green Image

Not Relevant

Not Contained

**Search Parts in this Series**

[505606](#) Series

**Mates With**

Receptacle Housing [505605-1000](#)

**Use With**

Terminal Retainer [504695](#) . Plug Crimp Terminal [50398](#) , [505608](#)