

EPIC® MH 2

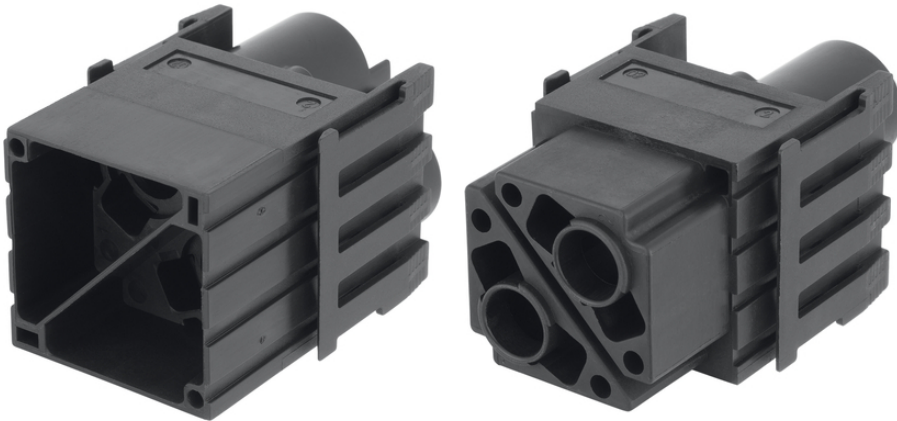
High flexibility by the use of any combination of inserts in one connector

High power module 2pole for compact power transmission

Info

Stamped gold plated contacts with 0.8mm diameter for D-Sub inserts

High power module 2pole for compact power transmission



Voltage



Wind Energy



Rail



Mechanical and plant engineering



Automation & fältinstallation



Flame-retardant

Benefits

High power module 2pole for compact power transmission

Crimp connection for permanent vibration proof contact

EPIC® MH system is mateable with the market standard

The mix of different functions in one plug guarantees high flexibility

Railway applications

- Fire protection on railway vehicles: Test according EN 45545-2. Requirement sets R22 and R23. Hazard level HL1, HL2 and HL4

Last Update (30.10.2017)

©2017 Lapp Group - Technical changes reserved

Product Management www.lappkabel.de

You can find the current technical data in the corresponding data sheet.

PN 0456 / 02_03.16

EPIC® MH 2

Application range

Mechanical engineering
Robotics industry
Plant engineering
Renewable energy
Railway applications / vehicle construction

Technical Data

Classification:	ETIM 5.0 Class-ID: EC002641 ETIM 5.0 Class-Description: Modular connector (industrial connector)
Rated voltage (V):	1000 V
Rated impulse voltage:	8 kV
Rated current (A):	100 A
Pollution degree:	3
Flammability:	UL94 V-0
Contact resistance:	< 5 mOhm
Number of contacts:	2
Termination methods:	Crimp termination: 10 mm ² ... 35 mm ²
Material:	Polyamide, glass fibre-reinforced
Cycle of mechanical operation:	500
Certifications:	UL-tested: UL File Number: E75770
Temperature range:	-40°C +125°C

Note

Photographs are not to scale and do not represent detailed images of the respective products.
Prices are net prices without VAT and surcharges. Sale to business customers only.



EPIC® MH 2

Article number	Article description	Contact type	Number of operating contacts	Slots
44423212	EPIC® MHS 2 CM	male	2	2
44423213	EPIC® MHB 2 CM	female	2	2

Last Update (30.10.2017)

©2017 Lapp Group - Technical changes reserved

Product Management www.lappkabel.de

You can find the current technical data in the corresponding data sheet.
PN 0456 / 02_03.16