

## ACT20M ACT20M-BAI-AO-S

**Weidmüller Interface GmbH & Co. KG**  
 Klingenbergstraße 16  
 D-32758 Detmold  
 Germany  
 Fon: +49 5231 1429-0  
 Fax: +49 5231 14292083  
 www.weidmueller.com



### ACT20M: The slim solution

- Safe and space-saving (6 mm) isolation and conversion
- Quick installation of the power supply unit using the CH20M mounting rail bus
- Easy configuration via DIP switch or FDT/DTM software
- Extensive approvals such as ATEX, IECEx, GL, DNV
- High interference resistance

### General ordering data

Type	ACT20M-BAI-AO-S
Order No.	<a href="#">1375450000</a>
Version	Signal converter/insulator, Configurable, Input : I/U/bidirectional I, Output : I/U/bidirectional I
GTIN (EAN)	4050118236736
Qty.	1 pc(s).

**ACT20M**  
**ACT20M-BAI-AO-S**

**Weidmüller Interface GmbH & Co. KG**  
 Klingenbergstraße 16  
 D-32758 Detmold  
 Germany  
 Fon: +49 5231 1429-0  
 Fax: +49 5231 14292083  
 www.weidmueller.com

**Technical data****Dimensions and weights**

Width	6.1 mm	Width (inches)	0.24 inch
Height	112.5 mm	Height (inches)	4.429 inch
Depth	114.3 mm	Depth (inches)	4.5 inch
Net weight	80 g		

**Temperatures**

Humidity	40 °C / 93 % rel. humidity, no condensation	Operating temperature	-25 °C...70 °C
Ambient temperature	-25 °C...+70 °C	Storage temperature	-40 °C...85 °C

**Probability of failure**

MTBF	181 Years
------	-----------

**Input**

Number of inputs	1	Input voltage	configurable, -5 V...0...+5 V, -10 V...0...+10 V
Input resistance, voltage	≥ 1 MΩ	Input current	configurable, -10 mA...0...+10 mA, -20 mA...0...+20 mA
Voltage drop, current input	1 V at 20 mA		

**Output**

Number of outputs	1	Output voltage, note	configurable, 0(2)...10 V, 0(1)...5 V
Output current	0...20 mA, 4...20 mA	Cut-off frequency (-3 dB)	≥ 100 Hz, 10 Hz
load impedance voltage	≥ 10 kΩ	load impedance current	≤ 600 Ω

**General data**

Accuracy	< 0.05 % of measuring range	Configuration	DIP switch
Galvanic isolation	4-way isolator;	Mounting rail	TS 35
Power consumption, max.	0.8 W	Power consumption, typ.	0.56 W
Step response time	≤ 7 ms, ≤ 100 ms, Configurable	Supply voltage	24 V DC ± 30 %
Temperature coefficient	< 0.01% of span/°C (TU)		

**Insulation coordination**

EMC standards	IEC 61326-1, NE 21	Galvanic isolation	4-way isolator;
Insulation voltage	2.5 kV <sub>eff</sub> / 1 min.	Pollution severity	2
Rated voltage	300 V <sub>eff</sub>	Standards	IEC 61010-1
Surge voltage category	II		

**Data for Ex applications (ATEX)**

Marking	II 3 G Ex nA IIC T4 Gc
---------	------------------------

**ACT20M**  
**ACT20M-BAI-AO-S**

**Weidmüller Interface GmbH & Co. KG**  
 Klingenbergstraße 16  
 D-32758 Detmold  
 Germany  
 Fon: +49 5231 1429-0  
 Fax: +49 5231 14292083  
 www.weidmueller.com

**Technical data****Connection data**

Type of connection	Screw connection	Tightening torque, min.	0.4 Nm
Tightening torque, max.	0.6 Nm	Clamping range, rated connection	2.5 mm <sup>2</sup>
Clamping range, rated connection, min.	0.5 mm <sup>2</sup>	Clamping range, rated connection, max.	2.5 mm <sup>2</sup>
Wire connection cross section AWG, min.	AWG 30	Wire connection cross section AWG, max.	AWG 14

**Rated data UL**

UL certificate	E337701.pdf
----------------	-------------

**Ratings IECEx/ATEX/cUL**

Certificate No. (ATEX)	KEMA10ATEX0183X	Certificate No. (IECEX)	IECEXKEM10.0090X
------------------------	-----------------	-------------------------	------------------

**Classifications**

ETIM 3.0	EC002479	ETIM 5.0	EC002653
ETIM 6.0	EC002653	eClass 6.2	27-21-01-20
eClass 7.1	27-21-01-20	eClass 8.1	27-21-01-20
eClass 9.0	27-21-01-20	eClass 9.1	27-21-01-20

**Product information**

Descriptive text technical data	Power supply optionally via mounting rail bus CH20M
Descriptive text accessories	Mounting rail bus, see accessories

**Approvals**

Approvals



ROHS	Conform
------	---------

**Downloads**

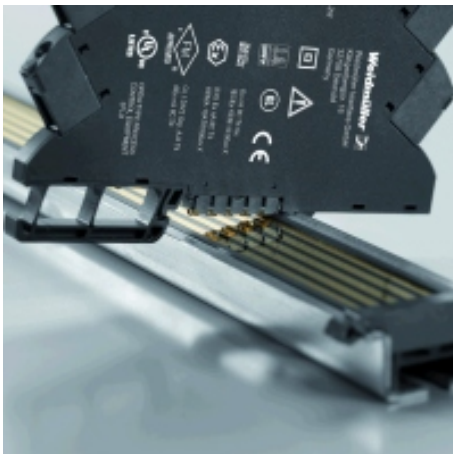
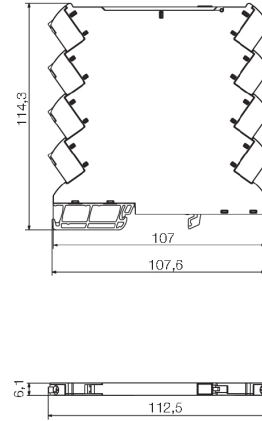
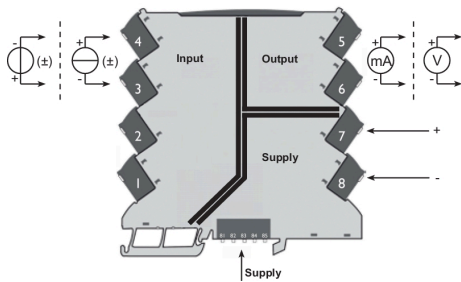
Approval/Certificate/Document of Conformity	<a href="#">Declaration of Conformity</a>
Brochure/Catalogue	<a href="#">CAT 4.1 ELECTR 16/17 EN</a>
Engineering Data	<a href="#">EPLAN, WSCAD, Zuken E3.S</a>
Software	<a href="#">DIP switch configuration tool</a>
User Documentation	<a href="#">Instruction sheet</a>

**Data sheet**

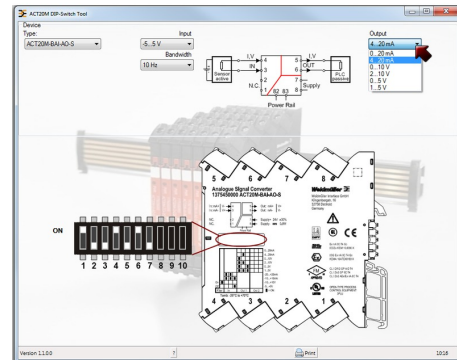
**ACT20M  
ACT20M-BAI-AO-S**

**Weidmüller Interface GmbH & Co. KG**  
 Klingenbergstraße 16  
 D-32758 Detmold  
 Germany  
 Fon: +49 5231 1429-0  
 Fax: +49 5231 14292083  
 www.weidmueller.com

**Drawings**



Power supply via the rail bus



example for DIP switch setting  
(with ACT20M tool software)