

ACT20M ACT20M-TCI-AO-E-S

Weidmüller Interface GmbH & Co. KG
 Klingenbergstraße 16
 D-32758 Detmold
 Germany
 Fon: +49 5231 1429-0
 Fax: +49 5231 14292083
 www.weidmueller.com



ACT20M: The slim solution

- Safe and space-saving (6 mm) isolation and conversion
- Quick installation of the power supply unit using the CH20M mounting rail bus
- Easy configuration via DIP switch or FDT/DTM software
- Extensive approvals such as ATEX, IECEX, GL, DNV
- High interference resistance

General ordering data

Type	ACT20M-TCI-AO-E-S
Order No.	137550000
Version	Temperature converter, Thermocouple, Input : Temperature, Output : I / U
GTIN (EAN)	4050118259674
Qty.	1 pc(s).

ACT20M
ACT20M-TCI-AO-E-S

Weidmüller Interface GmbH & Co. KG
 Klingenbergstraße 16
 D-32758 Detmold
 Germany
 Fon: +49 5231 1429-0
 Fax: +49 5231 14292083
 www.weidmueller.com

Technical data**Dimensions and weights**

Width	6.1 mm	Width (inches)	0.24 inch
Height	112.5 mm	Height (inches)	4.429 inch
Depth	114.3 mm	Depth (inches)	4.5 inch
Net weight	86 g		

Temperatures

Humidity	40 °C / 93 % rel. humidity, no condensation	Operating temperature	
Ambient temperature	-25 °C...+70 °C	Storage temperature	-40 °C...85 °C

Probability of failure

MTBF	189 Years
------	-----------

Input

Number of inputs	1	Sensor	Thermocouple (type J, K)
Input measurement range	Thermocouple type J -100...+1200°C, Thermocouple type K -200...+1370°C	Temperature input range	Configurable, min. measurement range 50°C (TC)

Output

Number of outputs	1	Output voltage, note	configurable, 0(2)...10 V, 0(1)...5 V
Output current	configurable, 0...20 mA, 4...20 mA	Wire break detection	3.5 mA/ 23 mA/ none
load impedance voltage	≥ 10 kΩ	load impedance current	≤ 600 Ω

General data

Accuracy	absolute accuracy: < ±0.1 % of the measurement range, Basic accuracy: < ±1 °C	Configuration	DIP switch
Galvanic isolation	Without isolation	Mounting rail	TS 35
Power consumption, max.	0.52 W	Power consumption, typ.	0.37 W
Step response time	≤ 30 ms, < 300 ms, Configurable	Supply voltage	24 V DC ± 30 %
Temperature coefficient	0,1 °C/°C, or, ≤0,01% des Messbereichs/°C		

Insulation coordination

EMC standards	IEC 61326-1, NE 21	Galvanic isolation	Without isolation
Pollution severity	2	Standards	IEC 61010-1

Data for Ex applications (ATEX)

Marking	II 3 G Ex nA IIC T4 Gc
---------	------------------------

ACT20M
ACT20M-TCI-AO-E-S

Weidmüller Interface GmbH & Co. KG
 Klingenbergstraße 16
 D-32758 Detmold
 Germany
 Fon: +49 5231 1429-0
 Fax: +49 5231 14292083
 www.weidmueller.com

Technical data**Connection data**

Type of connection	Screw connection	Tightening torque, min.	0.4 Nm
Tightening torque, max.	0.6 Nm	Clamping range, rated connection	2.5 mm ²
Clamping range, rated connection, min.	0.5 mm ²	Clamping range, rated connection, max.	2.5 mm ²
Wire connection cross section AWG, min.	AWG 30	Wire connection cross section AWG, max.	AWG 14

Rated data UL

UL certificate	E337701.pdf
----------------	-------------

Ratings IECEx/ATEX/cUL

Certificate No. (ATEX)	KEMA10ATEX0183X	Certificate No. (IECEX)	IECEXKEM10.0090X
------------------------	-----------------	-------------------------	------------------

Classifications

ETIM 5.0	EC002653	ETIM 6.0	EC002919
eClass 6.2	27-21-01-20	eClass 7.1	27-21-01-20
eClass 8.1	27-21-01-20	eClass 9.0	27-21-01-20
eClass 9.1	27-21-01-29		

Product information

Descriptive text accessories	DIN mounting rail, see accessories
------------------------------	------------------------------------

Approvals

Approvals



ROHS	Conform
------	---------

Downloads

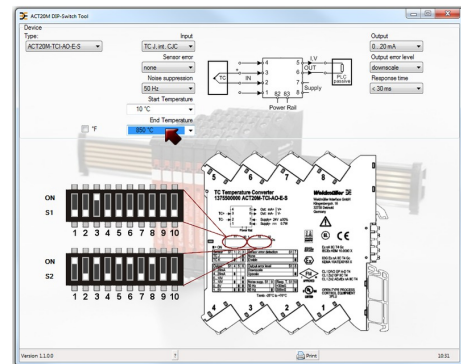
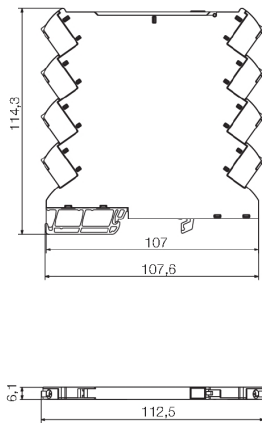
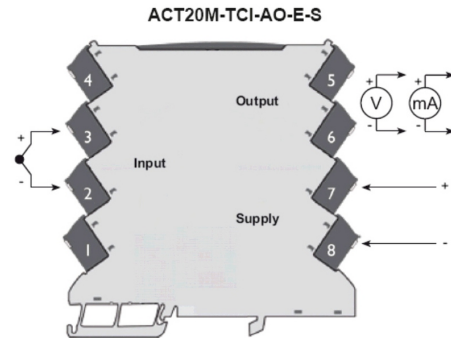
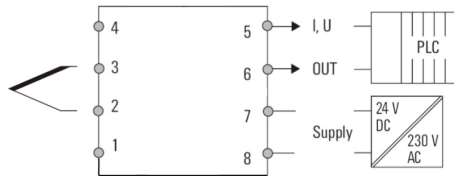
Approval/Certificate/Document of Conformity	Declaration of Conformity
Brochure/Catalogue	CAT 4.1 ELECTR 16/17 EN
Engineering Data	EPLAN, WSCAD
Software	DIP switch configuration tool
User Documentation	instruction sheet

Data sheet

**ACT20M
ACT20M-TCI-AO-E-S**

Weidmüller Interface GmbH & Co. KG
 Klingenbergstraße 16
 D-32758 Detmold
 Germany
 Fon: +49 5231 1429-0
 Fax: +49 5231 14292083
 www.weidmueller.com

Drawings



example for DIP switch setting
(with ACT20M tool software)