

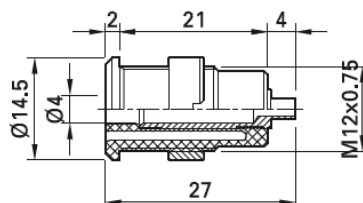
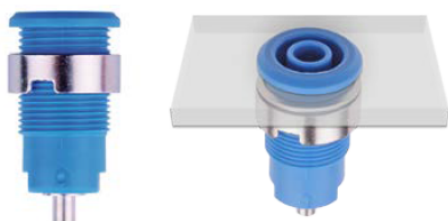
Panel-mount Socket SLB4-...

Insulated, rigid, Ø 4 mm, accepting spring-loaded Ø 4 mm plugs with rigid insulating sleeve. Machined brass. The socket

is screwed into pre-drilled panels of plastic, metal, etc.

Connection: Various.

SLB4-E



Order No.	Type	Rated voltage/current	Connection		*Colors										
49.7049-*	SLB4-E	1000 V, CAT III / 24 A	Solder connection	Ni	<table border="1"> <tr> <td>20</td> <td>21</td> <td>22</td> <td>23</td> <td>24</td> </tr> <tr> <td>25</td> <td>26</td> <td>27</td> <td>28</td> <td>29</td> </tr> </table>	20	21	22	23	24	25	26	27	28	29
20	21	22	23	24											
25	26	27	28	29											

Supplied assembly material

Page 104	MUR/M12x0,75	Round nut for	SLB4-E, SLB4-R, SLB4-R/N-X
Page 104	SSP4	Washer	SLB4-R



Assembly instructions MA152

www.staubli.com/electrical