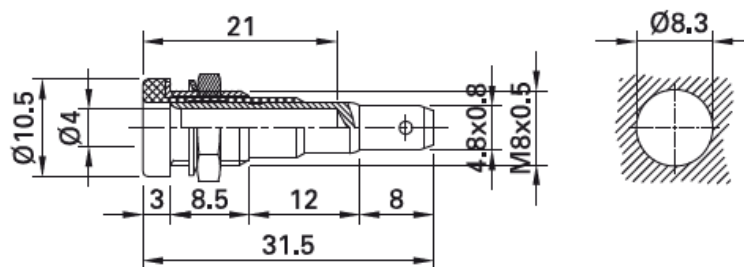
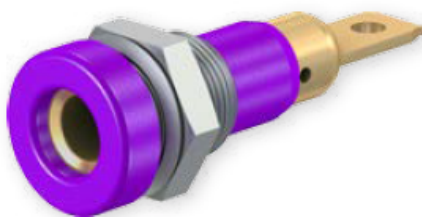


Panel-mount Socket LB-I4R-A

Insulated, Ø 4 mm, rigid. Machined brass. Metal thread jacket on the insulation. The socket can be screw-mounted in predrilled panels. Available with hexagonal nut.

Flat connecting tab 4.8 mm x 0.8 mm.

LB-I4R-A



| Order No. | Type | Rated voltage/current | Nut | | *Colors | | | | | | | | | | |
|-----------|----------|--------------------------------|---------------|----|---|----|----|----|----|----|----|----|----|----|----|
| 23.0190-* | LB-I4R-A | 30 VAC / 25 A 60 VDC / 25 A | Hexagonal nut | Au | <table border="1"> <tr> <td>20</td> <td>21</td> <td>22</td> <td>23</td> <td>24</td> </tr> <tr> <td>25</td> <td>26</td> <td>27</td> <td>28</td> <td>29</td> </tr> </table> | 20 | 21 | 22 | 23 | 24 | 25 | 26 | 27 | 28 | 29 |
| 20 | 21 | 22 | 23 | 24 | | | | | | | | | | | |
| 25 | 26 | 27 | 28 | 29 | | | | | | | | | | | |

Component parts

| | | |
|-----------|-------------|--------------------|
| 23.6333-* | BI-LB-I4R-A | Socket without nut |
| Page 68 | MU/M8x0,5 | Hexagonal Nuts |
| Page 69 | SP4 | Washer |