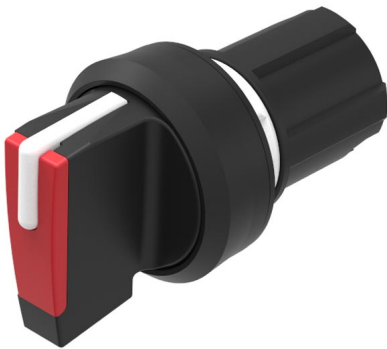


# EAO – Your Expert Partner for Human Machine Interfaces

## 45-280S.1C20.003 - Selector switch actuator 3 positions, short lever

### 45-280S.1C20.003 - Selector switch actuator 3 positions, short lever



*Attention: The preview is based on a sample product. This can differ from your current configuration.*

#### Mounting

Mounting cut-out Design Ø 22,3 mm raised

#### Front

Front shape round  
Front dimension Ø 29,5 mm  
Front bezel colour black  
Front bezel material Plastic

#### Other Attributes

Weight 0,022 kg

#### Operating-/Indication part

Lever material Plastic  
Lever colour red  
Switching angle 45° left+right  
Lever illumination  
Lever shape short

#### IP-Rating

Front protection IP66, IP67, IP69K

#### Actuator

Switching action Momentary - Rest - Momentary  
Housing material Plastic

#### Switching element

Rotary positions 3  
max. number of switching elements 6

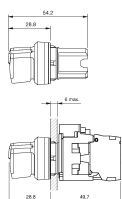
#### Function

Selector switch

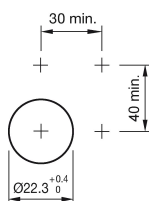
# EAO – Your Expert Partner for Human Machine Interfaces

45-280S.1C20.003 - Selector switch actuator 3 positions, short lever

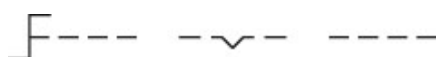
## Dimensions



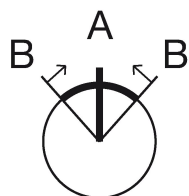
## Mounting cut-outs



## Wiring diagram



## Switching positions



## Additional information

External diameter of the short lever 32.3 mm

## Legend

Switching action: A = Rest, B = Momentary