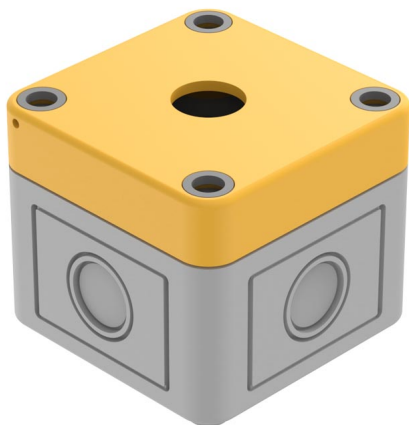


# EAO – Your Expert Partner for Human Machine Interfaces

## 84-910 - Emergency-stop enclosure

### 84-910 - Emergency-stop enclosure



*Attention: The preview is based on a sample product. This can differ from your current configuration.*

### Other Attributes

Dimension	65 x 65 x 57 mm
Weight	0,099 kg
Material	Plastic
Colour	

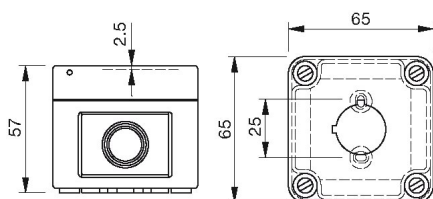
### IP-Rating

Protection degree	IP66
-------------------	------

# EAO – Your Expert Partner for Human Machine Interfaces

## 84-910 - Emergency-stop enclosure

### Dimensions



### Additional information

Bottom grey similar RAL 7035; cover lead-sealable, yellow similar RAL 1004

with mounting cut-out  $\varnothing 22.5$  mm, with anti-twist device

Openings for cable gland M16 or M20