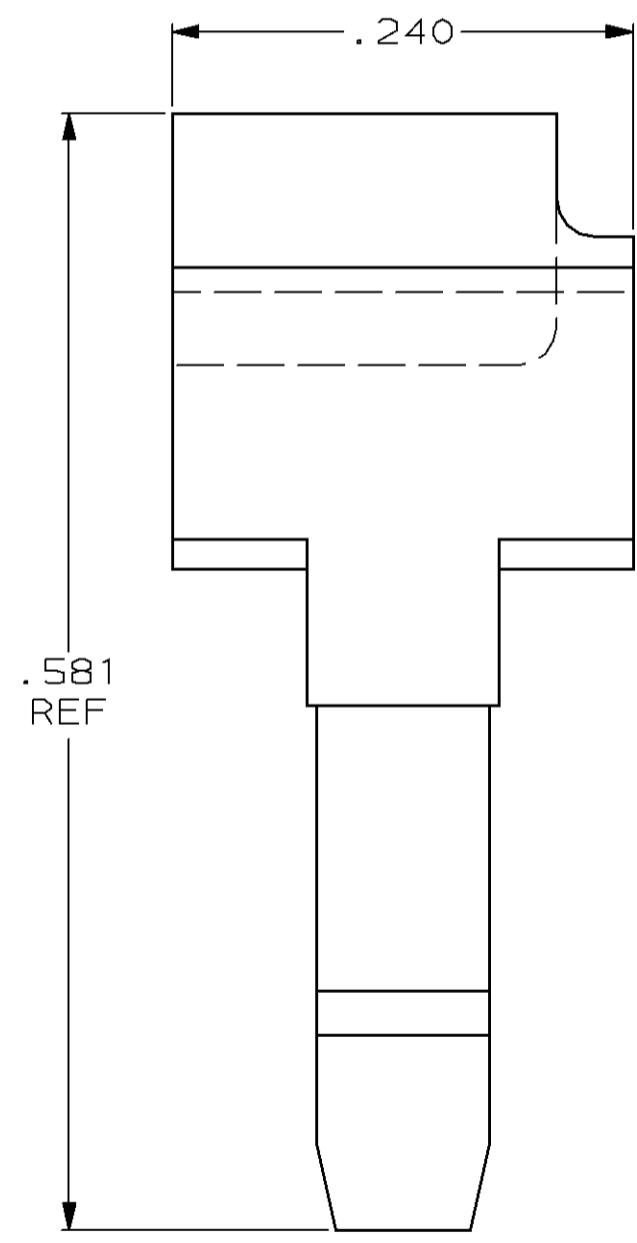
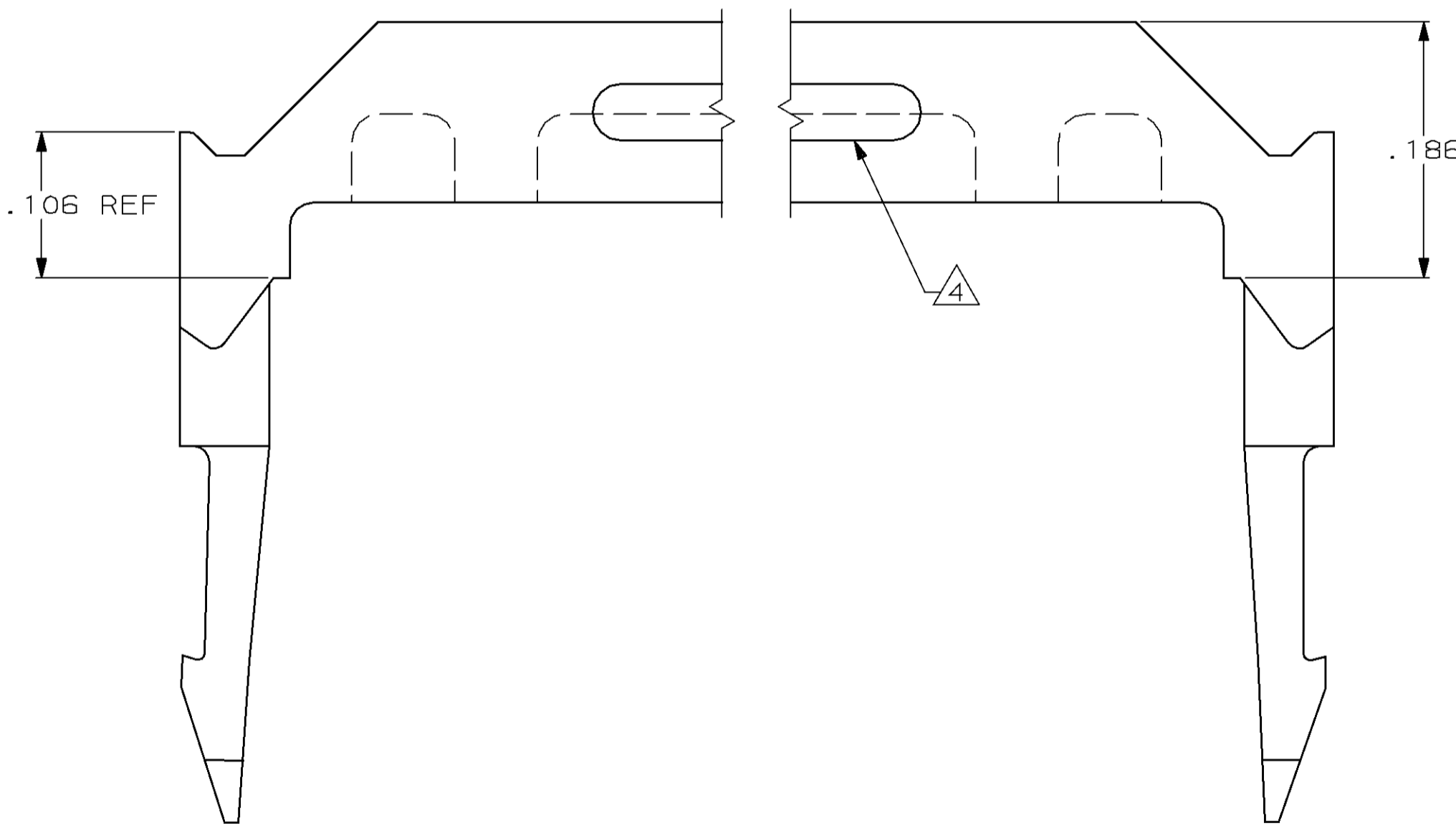
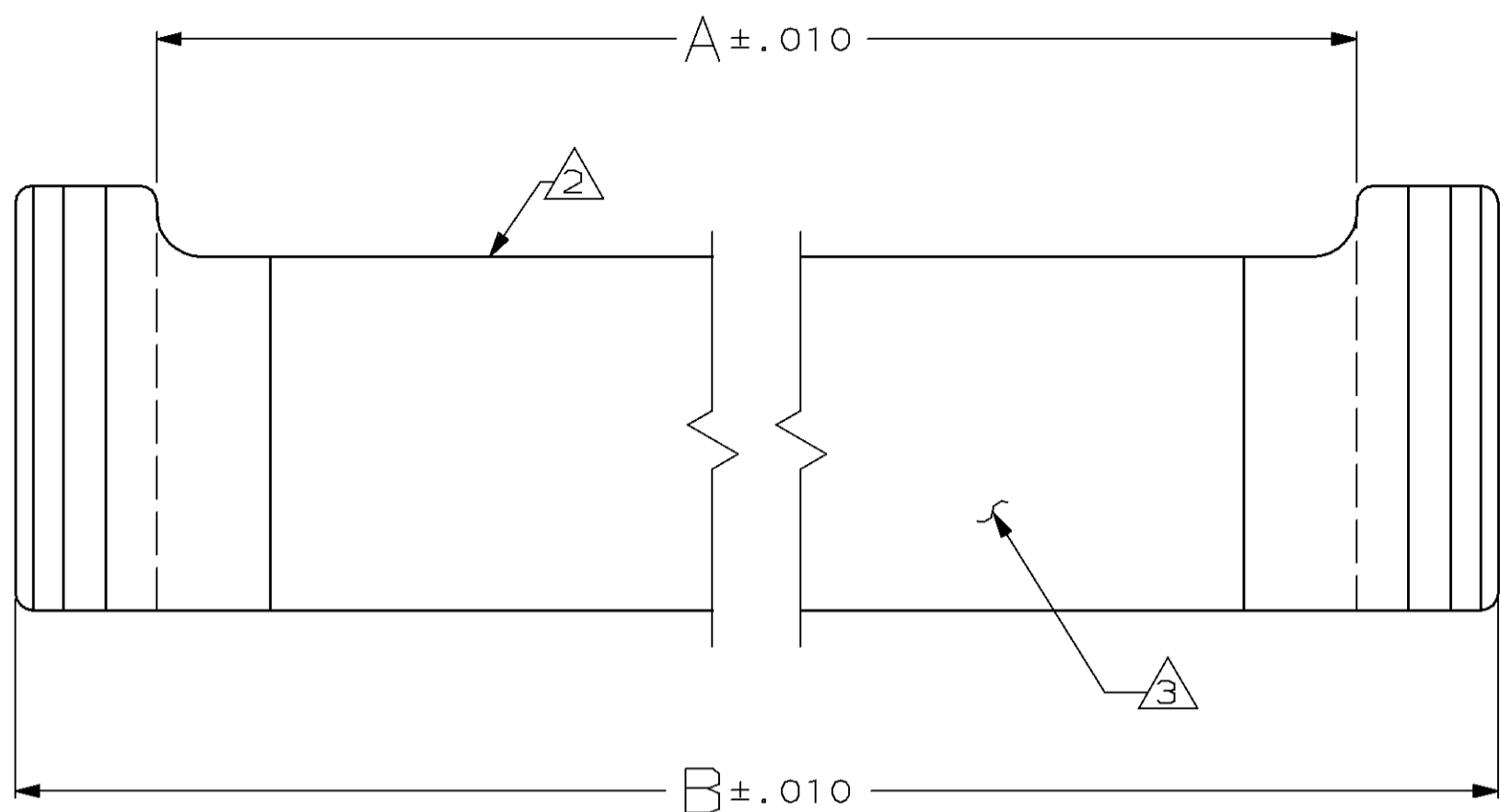


THIS DRAWING IS UNPUBLISHED. RELEASED FOR PUBLICATION, 19 .  
 © COPYRIGHT 19 BY AMP INCORPORATED. ALL INTERNATIONAL RIGHTS RESERVED.

Loc	DIST	P	F	ZONE	LTR	DESCRIPTION	DATE	APPD
AR	35				F	REDRAWN	2-23-90	-
					G	OBS -15 PER EC 0020-0141-94	04/04/94	JS



OBSOLETE	1.980	1.820	36	1-499252-5
OBSOLETE	1.280	1.120	22	1-499252-4
	3.380	3.220	64	1-499252-3
	1.680	1.520	30	1-499252-2
	2.380	2.220	44	1-499252-1
	1.380	1.220	24	1-499252-0
	.880	.720	14	499252-9
	.980	.820	16	499252-8
	3.180	3.020	60	499252-7
	1.880	1.720	34	499252-6
	.680	.520	10	499252-5
	2.680	2.520	50	499252-4
	1.480	1.320	26	499252-3
	1.180	1.020	20	499252-2
	2.180	2.020	40	499252-1
	B	A	NO OF POSN	PART NUMBER

- 1 MATERIAL: FLAME RETARDANT THERMOPLASTIC, COLOR: BLACK.
- 2 AMP TRADEMARK AND MOLD CAVITY LETTER TO BE MOLDED ON THIS SURFACE.
- 3 ALTERNATE LOCATION FOR AMP TRADEMARK AND CAVITY ID.
- 4 CORING SLOTS IN BOTH SIDES AS INDICATED, OR IN UNDERSIDE OF PART.

DO NOT SCALE PRINT. UNLESS SPECIFIED DIMENSIONS IN INCHES TOLERANCES ON: 2 PLC DEC ± - 3 PLC DEC ± .005 ANGLES ± -		DR 2-23-90 J GALLUCCI BG		AMP INCORPORATED Harrisburg, Pa. 17105	
MATERIAL 1		CHK 3-5-90 H.MOLL			
FINISH -		APPD 3-6-90 S.GOOD		NAME	
WEIGHT -		APPD 3-6-90 D.HOFFMAN		STRAIN RELIEF, RECEPTACLE CONNECTOR, FLAT CABLE, AMP-LATCH™	
		APPLICATION SPEC -		SIZE C	FSCM NO 00779
				DRAWING NO 499252	
				SCALE 10:1	SHEET 1 OF 1