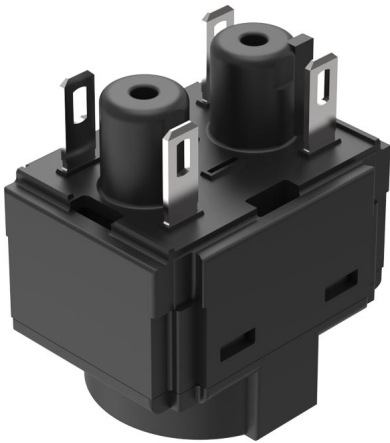


EAO – Your Expert Partner for Human Machine Interfaces

61-8775.17 - Switching element for emergency-stop switch, foolproof EN IEC 60947-5-5

61-8775.17 - Switching element for emergency-stop switch, foolproof EN IEC 60947-5-5



Attention: The preview is based on a sample product. This can differ from your current configuration.

Other Attributes

Weight 0,008 kg

Connection Method

Terminal Solder 2.8 x 0.5 mm

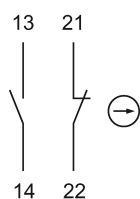
Switching element

Switching current 5 A
Switching system Slow-make switching element
Contacts 1 NC + 1 NO
Contact material Silver
Switching voltage 250 V AC/DC

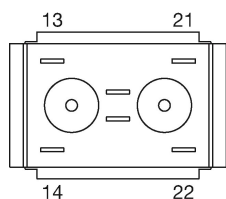
EAO – Your Expert Partner for Human Machine Interfaces

61-8775.17 - Switching element for emergency-stop switch, foolproof EN IEC 60947-5-5

Wiring diagram



Component layout



Legend

Contacts: NC = Normally closed, NO = Normally open