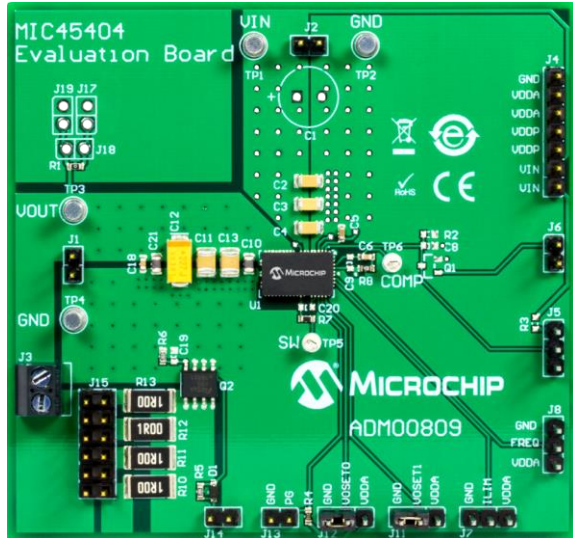




MIC45404 Eval Board

Part Number: ADM00809



Product Overview:

The MIC45404 Evaluation Board is used to evaluate the MIC45404 Module, which is optimized for high efficiency at low output voltage and incorporates a DC to DC regulator, bootstrap capacitor, high-frequency input capacitor and an inductor. The input voltage range for this board ranges from 4.5V to 19V while the output voltage is pin selectable from 0.7V to 3.3V at 5A. Additionally, an on-board load transient generator circuit and connections for loop gain measurements are provided.

Key Features:

- Input Voltage Range: 4.5V to 19V
- Output Current: Up to 5A
- Pin-Selectable Output Voltages: 0.7V, 0.8V, 0.9V, 1.0V, 1.2V, 1.5V, 1.8V, 2.5V, 3.3V
- Pin-Selectable Current Limit
- Pin-Selectable Switching Frequency
- -40°C to +125°C Junction Temperature Range

Package Contents:

- ❖ 1 x MIC45404 Evaluation Board