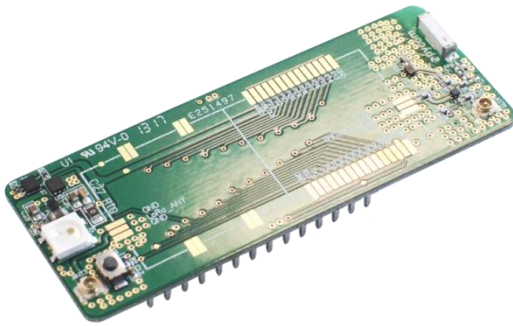




REFERENCE BOARD USED TO MOUNT AND TEST PYCOM OEM MODULES

Reference Board



Description

Reference Board used to mount either Pycom OEM modules. Provides the same functionality and pin-out as the developer version of the modules and can be mounted straight-out-of the box.

Contains:

- RGB LED
- 5V to 3.3V DC-DC switching regulator
- u.fl connector for the LoRa antenna
- Dual antenna options for WiFi/Bluetooth
- Male header pins

Note: L01 not Included / ONLY 1 Reference Board per order due to LOW stocks

Additional information

Weight

0.02 kg