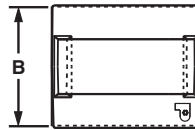
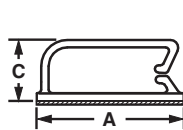
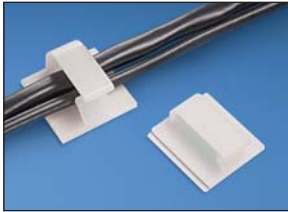
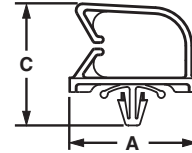


Bevel Entry Clips

- Beveled entry allows for easy insertion of cable bundle
- Rubber-based adhesive provides a strong and reliable bond



BEC



BECP

Part Number	Max. Bundle Diameter		Length A		Width B		Height C		Material	Color	Mounting Method	Std. Pkg. Qty.	Std. Ctn. Qty.
	In.	mm	In.	mm	In.	mm	In.	mm					

Adhesive Backed

BEC38-A-L	0.38	9.6	1.46	37.1	1.24	31.5	0.52	13.2	Nylon 6.6	Natural	Rubber Adhesive	50	500
BEC38-A-L20									Nylon 6.6	Black	Rubber Adhesive	50	500
BEC38-AT-L0									Weather Resistant Nylon 6.6	Black	Acrylic Adhesive Tape	50	500
BEC62-A-L	0.62	15.7	1.46	37.1	1.24	31.5	0.79	20.1	Nylon 6.6	Natural	Rubber Adhesive	50	500
BEC62-A-L20									Nylon 6.6	Black	Rubber Adhesive	50	500
BEC62-AT-L0									Weather Resistant Nylon 6.6	Black	Acrylic Adhesive Tape	50	500
BEC75-A-L	0.75	19.0	1.49	37.8	1.49	37.8	0.89	22.6	Nylon 6.6	Natural	Rubber Adhesive	50	500
BEC75-A-L20									Nylon 6.6	Black	Rubber Adhesive	50	500
BEC75-AT-L0									Weather Resistant Nylon 6.6	Black	Acrylic Adhesive Tape	50	500

Push Barb

BECP38H25-L	0.38	9.6	1.46	37.1	0.73	18.5	1.00	25.4	Nylon 6.6	Natural	Push Barb	50	500
BECP38H25-L20	0.38	9.6	1.46	37.1						Black		50	500
BECP75H25-L	0.75	19.0	1.47	37.3	0.73	18.5	1.35	34.3	Nylon 6.6	Natural	Push Barb	50	500
BECP75H25-L20	0.75	19.0	1.47	37.3						Black		50	500

Wire Bundle Strap

- Securely routes large cable bundles
- Rounded edges prevent damage to cable jackets
- Mounting method: two 1/4" (M6) screws
- Dimensions are 4.70"L x 1.00"W x 2.54"H (119.4mm x 25.4mm x 64.5mm)
- For indoor use only



Part Number	Material	Color	Std. Pkg. Qty.	Std. Ctn. Qty.
WBS6-Q	ABS	White	25	125
WBS6-Q60*	Flame Retardant Nylon 6.6	Black	25	125

*Manufactured from a UL 94V-0 material.