

## ACEPACK™ 1 - sixpack topology - 1200 V, 25 A trench gate field-stop IGBT M series, soft diode and NTC

Datasheet - production data

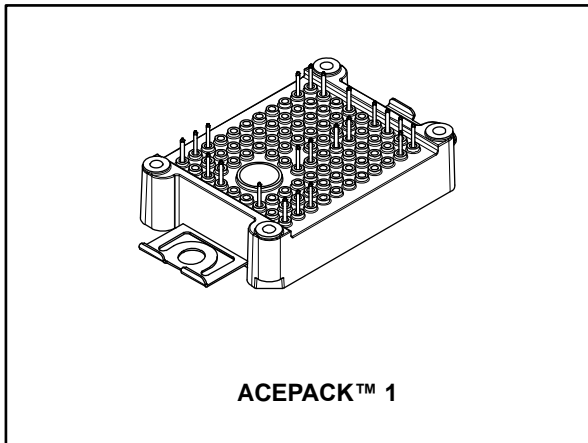
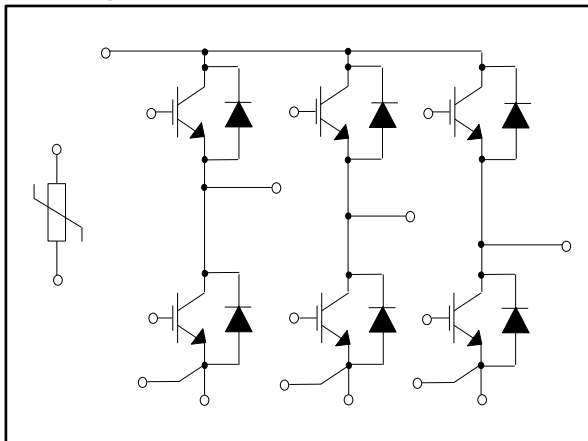


Figure 1: Internal electrical schematic



### Features

- ACEPACK™ 1 power module
  - DBC Cu Al<sub>2</sub>O<sub>3</sub> Cu
- Sixpack topology
  - 1200 V, 25 A IGBTs and diodes
  - $V_{CE(sat)}$ : 1.95 V @  $I_C = 25$  A
  - Soft and fast recovery diode
- Integrated NTC

### Applications

- Inverters
- Industrial
- Motor drives

### Description

This power module is a sixpack topology in an ACEPACK™ 1 package with NTC, integrating the advanced trench gate field-stop technologies from STMicroelectronics. This new IGBT technology represents the best compromise between conduction and switching loss, to maximize the efficiency of any converter system up to 20 kHz.

Table 1: Device summary

Order code	Marking	Package	Leads type
A1P25S12M3	A1P25S12M3	ACEPACK™ 1	Solder contact pins

---

## Contents

<b>1</b>	<b>Electrical ratings .....</b>	<b>3</b>
1.1	IGBT.....	3
1.2	Diode.....	4
1.3	NTC.....	5
1.4	Package.....	6
<b>2</b>	<b>Electrical characteristics curves.....</b>	<b>7</b>
<b>3</b>	<b>Test circuits .....</b>	<b>9</b>
<b>4</b>	<b>Topology and pin description .....</b>	<b>10</b>
<b>5</b>	<b>Package information .....</b>	<b>11</b>
5.1	ACEPACK™ 1 sixpack solder pins package information .....	11
<b>6</b>	<b>Revision history .....</b>	<b>12</b>

# 1 Electrical ratings

## 1.1 IGBT

Limiting values at  $T_j = 25\text{ °C}$ , unless otherwise specified.

**Table 2: Absolute maximum ratings of the IGBT**

Symbol	Parameter	Value	Unit
$V_{CES}$	Collector-emitter voltage ( $V_{GE} = 0$ )	1200	V
$I_C$	Continuous collector current ( $T_c = 100\text{ °C}$ )	25	A
$I_{CP}^{(1)}$	Pulsed collector current	50	A
$V_{GE}$	Gate-emitter voltage	$\pm 20$	V
$P_{TOT}$	Total power dissipation	197	W
$T_{JMAX}$	Maximum junction temperature	175	$^{\circ}\text{C}$
$T_{Jop}$	Operative temperature range under switching conditions	-40 to 150	$^{\circ}\text{C}$

**Notes:**

<sup>(1)</sup>Pulse width limited by maximum junction temperature.

**Table 3: Electrical characteristics of the IGBT**

Symbol	Parameter	Test conditions	Min.	Typ.	Max.	Unit
$V_{(BR)CES}$	Collector-emitter breakdown voltage	$I_C = 1\text{ mA}$ , $V_{GE} = 0\text{ V}$	1200			V
$V_{CE(sat)}$	Collector-emitter saturation voltage	$V_{GE} = 15\text{ V}$ , $I_C = 25\text{ A}$		1.95	2.45	V
		$V_{GE} = 15\text{ V}$ , $I_C = 25\text{ A}$ , $T_J = 150\text{ °C}$		2.3		
$V_{GE(th)}$	Gate threshold voltage	$V_{CE} = V_{GE}$ , $I_C = 1\text{ mA}$	5	6	7	V
$I_{CES}$	Collector cut-off current	$V_{GE} = 0\text{ V}$ , $V_{CE} = 1200\text{ V}$			100	$\mu\text{A}$
$I_{GES}$	Gate-emitter leakage current	$V_{CE} = 0\text{ V}$ , $V_{GE} = \pm 20\text{ V}$			$\pm 500$	nA
$C_{ies}$	Input capacitance	$V_{CE} = 25\text{ V}$ , $f = 1\text{ MHz}$ , $V_{GE} = 0\text{ V}$		1550		pF
$C_{oes}$	Output capacitance			130		pF
$C_{res}$	Reverse transfer capacitance			65		pF
$Q_g$	Total gate charge	$V_{CC} = 960\text{ V}$ , $I_C = 25\text{ A}$ , $V_{GE} = \pm 15\text{ V}$		122		nC
$t_{d(on)}$	Turn-on delay time	$V_{CC} = 600\text{ V}$ , $I_C = 25\text{ A}$ , $R_G = 15\ \Omega$ , $V_{GE} = \pm 15\text{ V}$ , $di/dt = 1247\text{ A}/\mu\text{s}$		121		ns
$t_r$	Current rise time			17		ns
$E_{on}^{(1)}$	Turn-on switching energy	$V_{CC} = 600\text{ V}$ , $I_C = 25\text{ A}$ , $R_G = 15\ \Omega$ , $V_{GE} = \pm 15\text{ V}$ , $dv/dt = 10200\text{ V}/\mu\text{s}$ ;		1.08		mJ
$t_{d(off)}$	Turn-off delay time			119		ns
$t_f$	Current fall time			127		ns
$E_{off}^{(2)}$	Turn-off switching energy			1.12		mJ

Symbol	Parameter	Test conditions	Min.	Typ.	Max.	Unit
$t_{d(on)}$	Turn-on delay time	$V_{CC} = 600\text{ V}$ , $I_C = 25\text{ A}$ , $R_G = 15\ \Omega$ , $V_{GE} = \pm 15\text{ V}$ , $di/dt = 1100\text{ A}/\mu\text{s}$ , $T_J = 150\text{ }^\circ\text{C}$		121		ns
$t_r$	Current rise time			18		ns
$E_{on}$	Turn-on switching energy				1.65	
$t_{d(off)}$	Turn-off delay time	$V_{CC} = 600\text{ V}$ , $I_C = 25\text{ A}$ , $R_G = 15\ \Omega$ , $V_{GE} = \pm 15\text{ V}$ , $dv/dt = 8300\text{ V}/\mu\text{s}$ , $T_J = 150\text{ }^\circ\text{C}$		125		ns
$t_f$	Current fall time			201		ns
$E_{off}$	Turn-off switching energy				1.66	
$t_{sc}$	Short-circuit withstand time	$V_{CC} \leq 600\text{ V}$ , $V_{GE} \leq 15\text{ V}$ , $T_{Jstart} \leq 150\text{ }^\circ\text{C}$	10			$\mu\text{s}$
$R_{THj-c}$	Thermal resistance junction to case	Each IGBT		0.69	0.76	$^\circ\text{C}/\text{W}$
$R_{THc-h}$	Thermal resistance case to heatsink	Each IGBT, $\lambda_{grease} = 1\text{ W}/(\text{m}\cdot^\circ\text{C})$		0.79		$^\circ\text{C}/\text{W}$

**Notes:**<sup>(1)</sup>Including the reverse recovery of the diode.<sup>(2)</sup>Including the tail of the collector current.

## 1.2 Diode

Table 4: Absolute maximum ratings of the diode

Symbol	Parameter	Value	Unit
$V_{RRM}$	Repetitive peak reverse voltage	1200	V
$I_F$	Continuous forward current at ( $T_C = 100\text{ }^\circ\text{C}$ )	25	A
$I_{FP}^{(1)}$	Pulsed forward current	50	A
$T_{JMAX}$	Maximum junction temperature	175	$^\circ\text{C}$
$T_{Jop}$	Operative temperature range under switching conditions	-40 to 150	$^\circ\text{C}$

**Notes:**<sup>(1)</sup>Pulse width limited by maximum junction temperature.

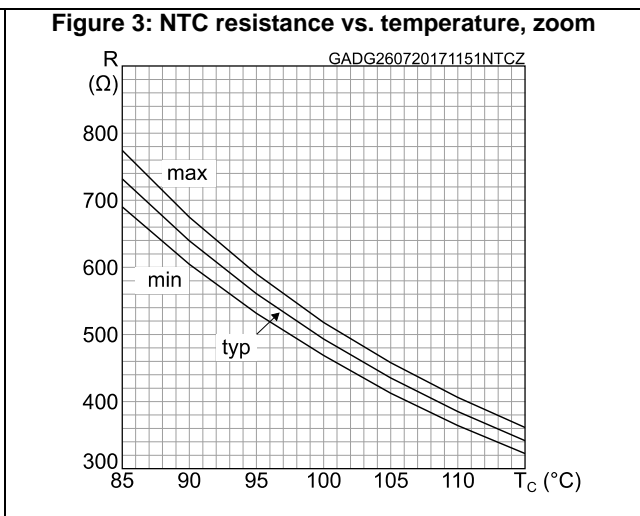
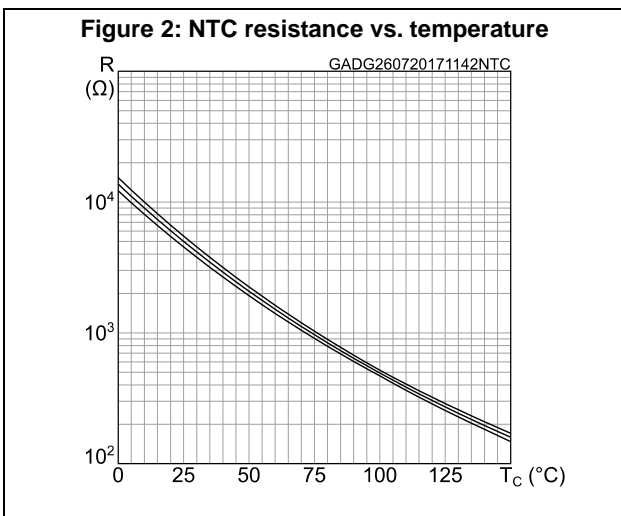
Table 5: Electrical characteristics of the diode

Symbol	Parameter	Test conditions	Min.	Typ.	Max.	Unit
V <sub>F</sub>	Forward voltage	I <sub>F</sub> = 25 A	-	2.95	4.1	V
		I <sub>F</sub> = 25 A, T <sub>J</sub> = 150 °C	-	2.3		
t <sub>rr</sub>	Reverse recovery time	I <sub>F</sub> = 25 A, V <sub>R</sub> = 600 V, V <sub>GE</sub> = ±15 V, di/dt = 1247 A/μs	-	190		ns
Q <sub>rr</sub>	Reverse recovery charge		-	1.55		μC
I <sub>rrm</sub>	Reverse recovery current		-	29		A
E <sub>rec</sub>	Reverse recovery energy		-	0.71		mJ
t <sub>rr</sub>	Reverse recovery time	I <sub>F</sub> = 25 A, V <sub>R</sub> = 600 V, V <sub>GE</sub> = ±15 V, di/dt = 1100 A/μs, T <sub>J</sub> = 150 °C	-	400		ns
Q <sub>rr</sub>	Reverse recovery charge		-	4.0		μC
I <sub>rrm</sub>	Reverse recovery current		-	37		A
E <sub>rec</sub>	Reverse recovery energy		-	2.05		mJ
R <sub>THj-c</sub>	Thermal resistance junction to case	Each diode	-	1.05	1.16	°C/W
R <sub>THc-h</sub>	Thermal resistance case to heatsink	Each diode, λ <sub>grease</sub> = 1 W/(m·°C)	-	0.85		°C/W

### 1.3 NTC

Table 6: NTC temperature sensor, considered as stand-alone

Symbol	Parameter	Test condition	Min.	Typ.	Max.	Unit
R <sub>25</sub>	Resistance	T = 25°C		5		kΩ
R <sub>100</sub>	Resistance	T = 100°C		493		Ω
ΔR/R	Deviation of R <sub>100</sub>		-5		+5	%
B <sub>25/50</sub>	B-constant			3375		K
B <sub>25/80</sub>	B-constant			3411		K
T	Operating temperature range		-40		150	°C

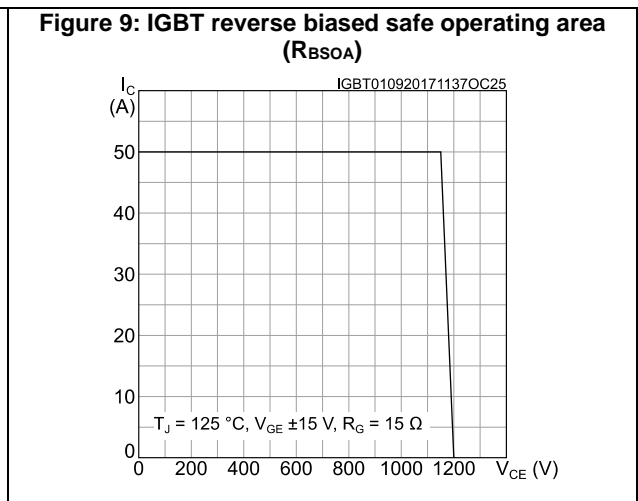
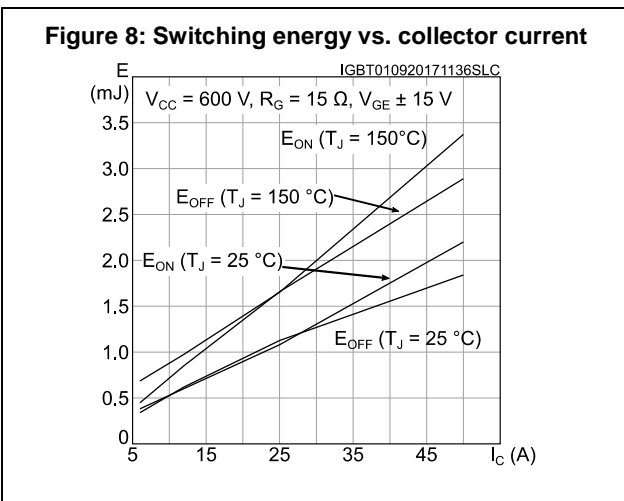
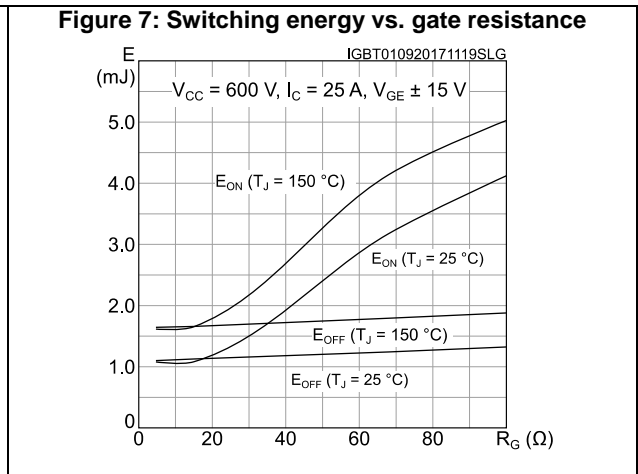
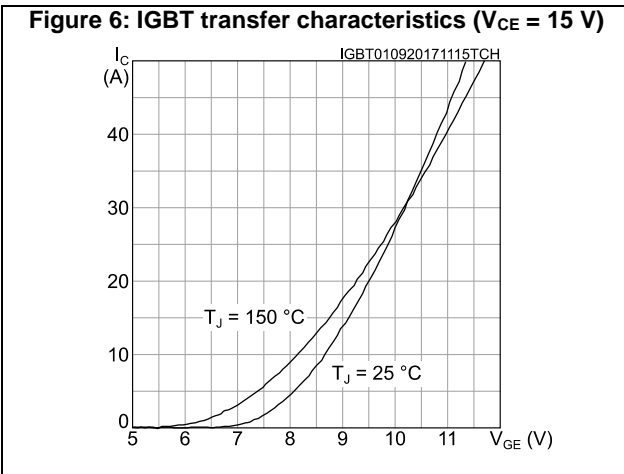
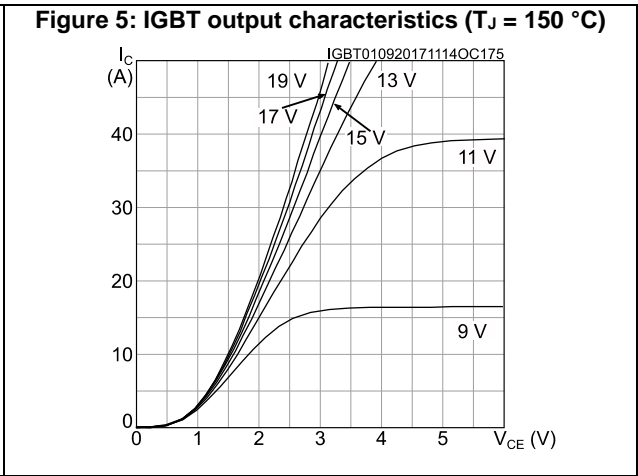
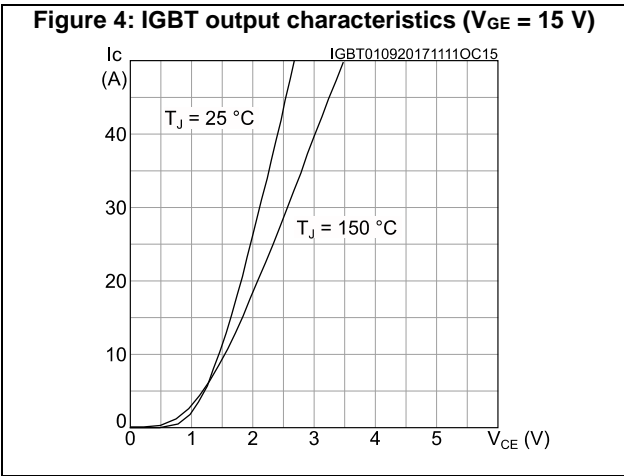


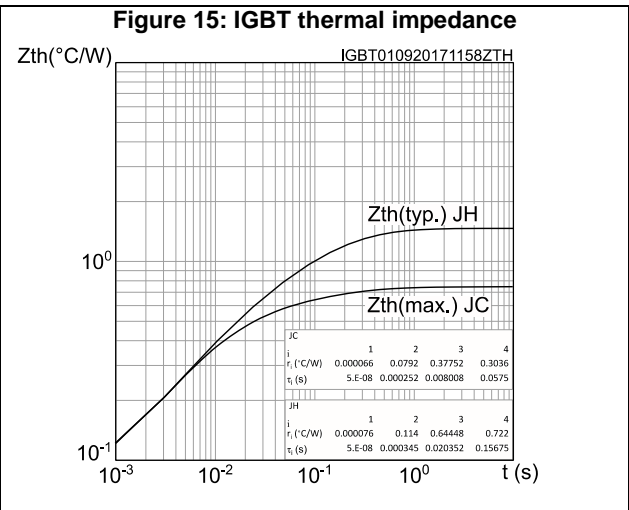
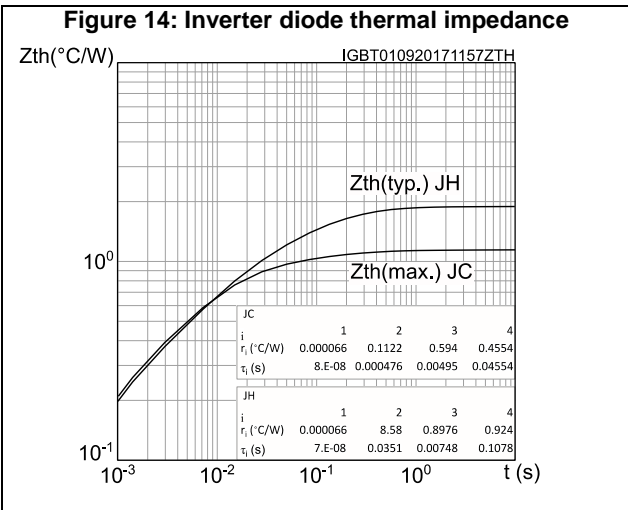
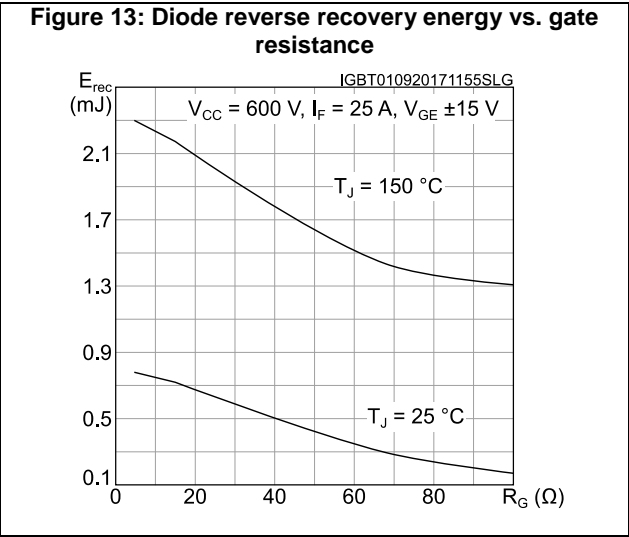
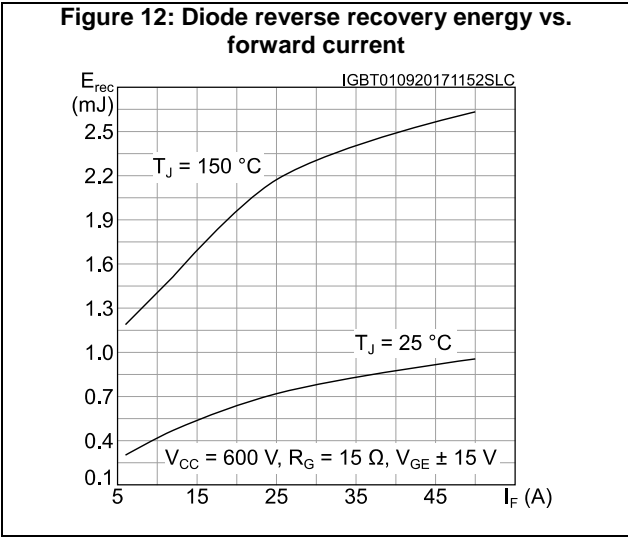
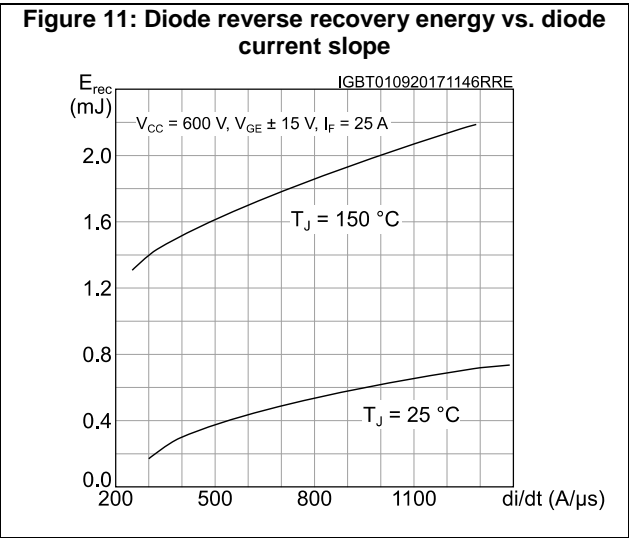
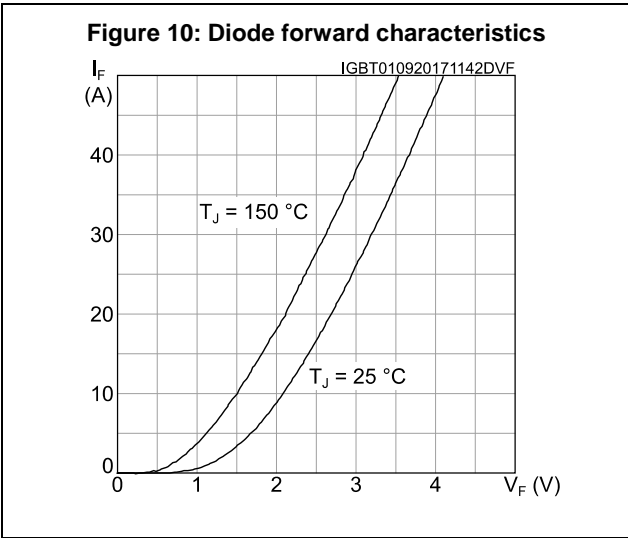
## 1.4 Package

Table 7: ACEPACK™ 1 package

Symbol	Parameter	Min.	Typ.	Max.	Unit
$V_{isol}$	Isolation voltage (AC voltage, $t = 60$ s)			2500	V
$M_d$	Screw mounting torque	40		80	Nm
$T_{stg}$	Storage temperature	-40		125	°C
CTI	Comparative tracking index	200			
$L_s$	Stray inductance module P1 - EW loop		28.7		nH
$R_s$	Module lead resistance, terminal to chip		3.9		mΩ

## 2 Electrical characteristics curves

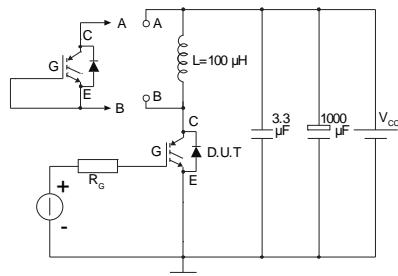






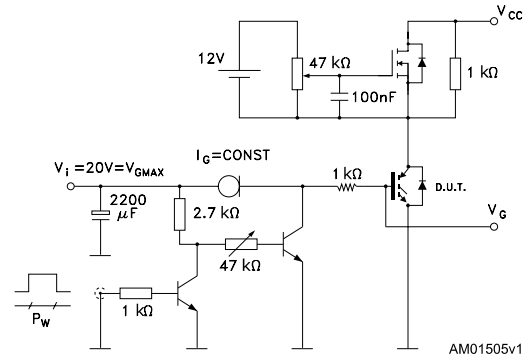
### 3 Test circuits

**Figure 16: Test circuit for inductive load switching**



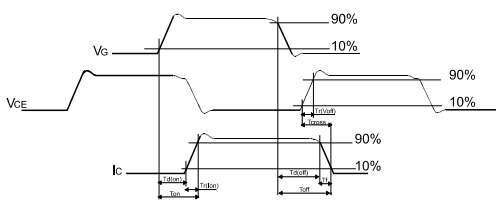
AM01504v1

**Figure 17: Gate charge test circuit**



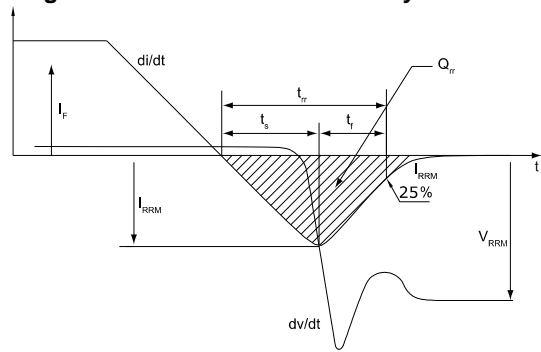
AM01505v1

**Figure 18: Switching waveform**



AM01506v1

**Figure 19: Diode reverse recovery waveform**



AM01507v1

# 4 Topology and pin description

Figure 20: Electrical topology and pin description

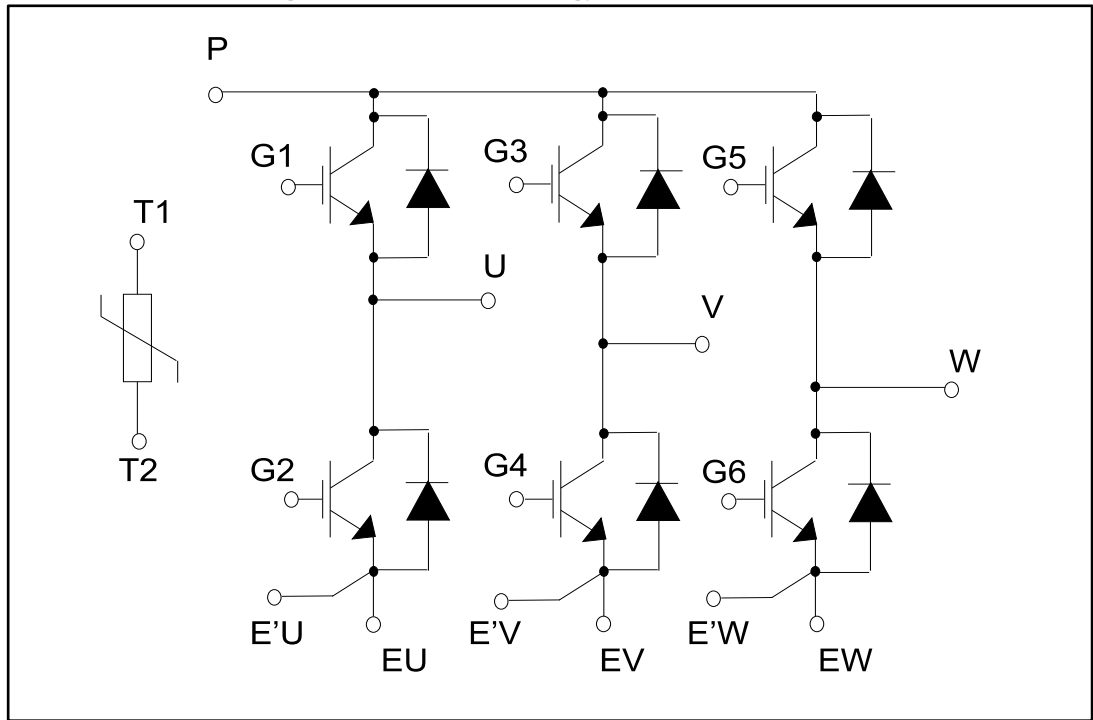
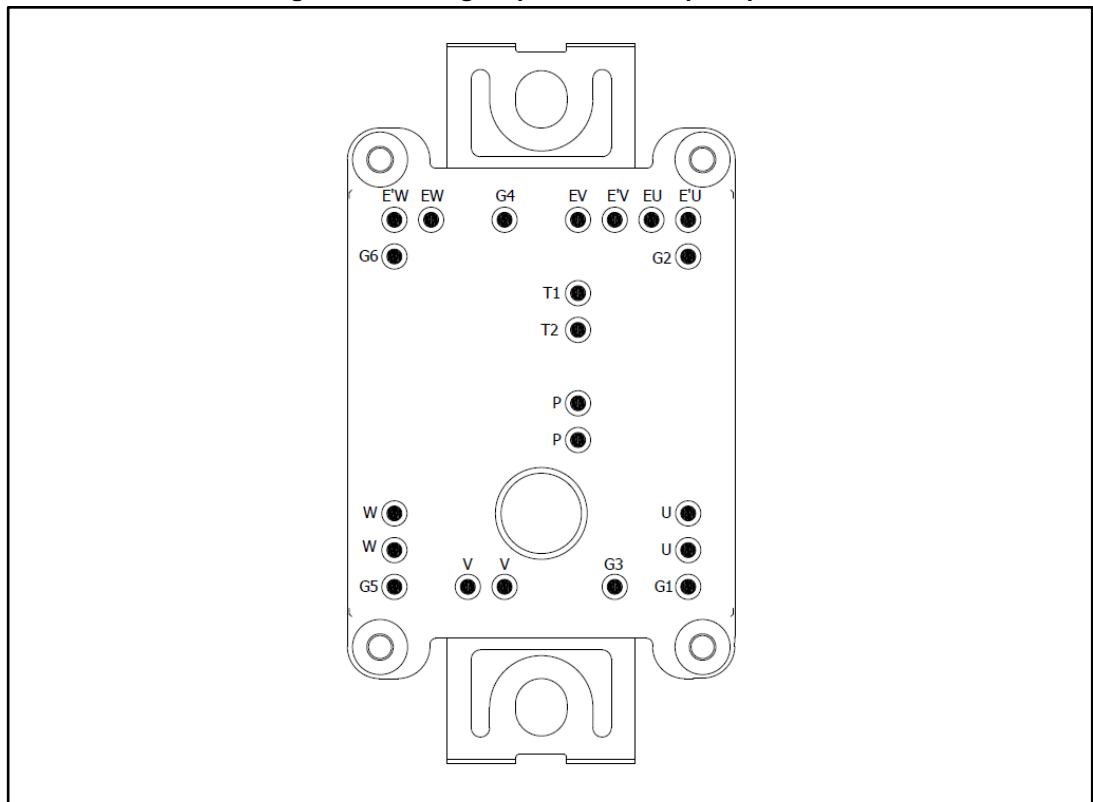


Figure 21: Package top view with sixpack pinout

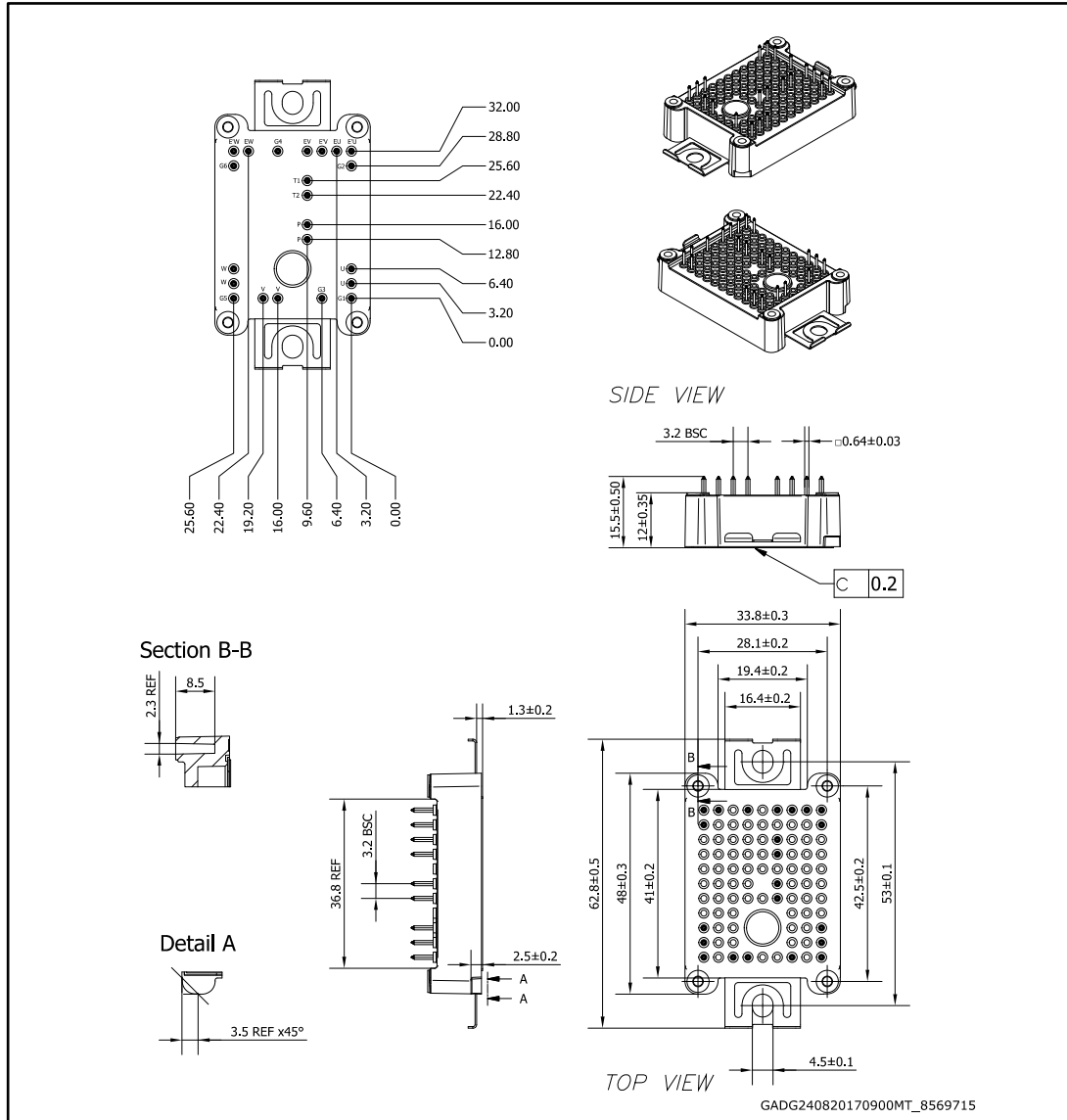


## 5 Package information

In order to meet environmental requirements, ST offers these devices in different grades of ECOPACK® packages, depending on their level of environmental compliance. ECOPACK® specifications, grade definitions and product status are available at: [www.st.com](http://www.st.com). ECOPACK® is an ST trademark.

### 5.1 ACEPACK™ 1 sixpack solder pins package information

Figure 22: ACEPACK™ 1 sixpack solder pins package outline (dimensions are in mm)



- The lead size includes the thickness of the lead plating material.
- Dimensions do not include mold protrusion.
- Package dimensions do not include any eventual metal burrs.

## 6 Revision history

**Table 8: Document revision history**

Date	Revision	Changes
01-Sep-2017	1	Initial release.
03-Oct-2017	2	Document status promoted from preliminary data to production data. Updated <a href="#">Table 7: "ACEPACK™ 1 package"</a> and <a href="#">Section 2: "Electrical characteristics curves"</a> . Minor text changes.

**IMPORTANT NOTICE – PLEASE READ CAREFULLY**

STMicroelectronics NV and its subsidiaries ("ST") reserve the right to make changes, corrections, enhancements, modifications, and improvements to ST products and/or to this document at any time without notice. Purchasers should obtain the latest relevant information on ST products before placing orders. ST products are sold pursuant to ST's terms and conditions of sale in place at the time of order acknowledgement.

Purchasers are solely responsible for the choice, selection, and use of ST products and ST assumes no liability for application assistance or the design of Purchasers' products.

No license, express or implied, to any intellectual property right is granted by ST herein.

Resale of ST products with provisions different from the information set forth herein shall void any warranty granted by ST for such product.

ST and the ST logo are trademarks of ST. All other product or service names are the property of their respective owners.

Information in this document supersedes and replaces information previously supplied in any prior versions of this document.

© 2017 STMicroelectronics – All rights reserved