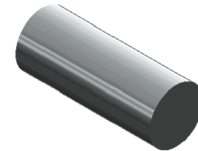
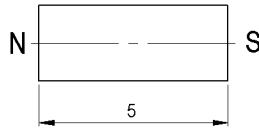
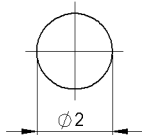


Dimensions mm[inch]
 tolerances acc. to DIN ISO 2768-m
 Toleranzen gem. DIN ISO 2768-m

Isometric
 Scale 5:1
 Maßstab 5:1



Mag. values DIN IEC 60404-8-	Conditions	Min	Typ	Max	Unit
Magnet Material		NdFeB			
Remanent Induction Br		1.330	1.370		mT
Coercivity HcB		836	891		kA/m
Intrinsic Coercivity HcJ		955			kA/m
Max. operating temperature				80	°C
Magnetic moment	inclusive of 5% tolerance				E-6 Vs*cm
Direction of Magnetization		axial			

General data	Conditions	Min	Typ	Max	Unit
Remarks		all details acc. to supplier informations.			