

(1.27 mm) .050"

HIGH-SPEED/HIGH-DENSITY OPEN-PIN-FIELD

SPECIFICATIONS

For complete specifications and recommended PCB layouts see www.samtec.com?SEAM

- Insulator Material:** Black LCP
- Contact Material:** Copper Alloy
- Operating Temp Range:** -55 °C to +125 °C
- Current Rating (7 mm stack height):** 2.7 A per pin (10 adjacent pins powered)
- Plating:** Au or Sn over 50 μ" (1.27 μm) Ni
- Working Voltage:** 240 VAC
- RoHS Compliant:** Yes
- Lead-Free Solderable:** Yes

RECOGNITIONS

For complete scope of recognitions see www.samtec.com/quality



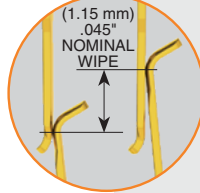
STANDARDS

- VITA 47
- VITA 57.1 FMC
- VITA 57.4 FMC+
- VITA 74 VNX

PROTOCOLS

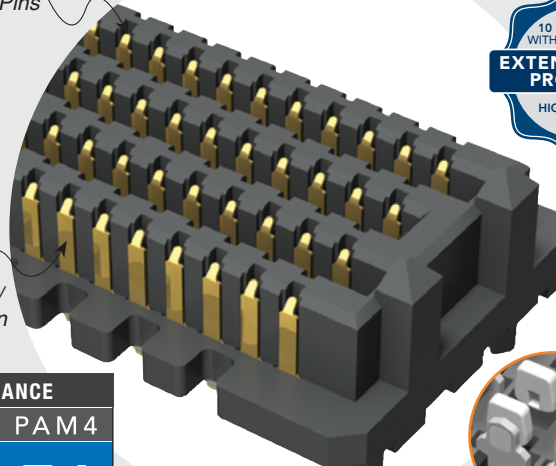
- 100 GbE
- Fibre Channel
- Rapid I/O
- PCI Express®
- SATA
- InfiniBand™

Mates with: SEAF, SEAFP
Standoffs: JSO



Up to 500 Pins

Low insertion/extraction forces



Solder charges

HIGH-SPEED CHANNEL PERFORMANCE

SEAF/SEAM @ 10 mm Mated Stack Height
Rating based on Samtec reference channel.
For full SI performance data visit Samtec.com or contact SIG@samtec.com

PAM 4

56 Gbps

OTHER SOLUTIONS

- Up to 560 pins

SEAM	NO. PINS PER ROW	LEAD STYLE	PLATING OPTION	NO. OF ROWS	SOLDER TYPE	A	K	TR
		Specify LEAD STYLE from chart	<p>-L = 10 μ" (0.25 μm) Gold on contact area, Matte Tin on solder tail</p> <p>-S = 30 μ" (0.76 μm) Gold on contact area, Matte Tin on solder tail</p>	<p>-04 = Four Rows (-06.5 not available)</p> <p>-05 = Five Rows (-06.5 not available)</p> <p>-06 = Six Rows (-06.5 not available)</p> <p>-08 = Eight Rows</p> <p>-10 = Ten Rows</p>	<p>-1 = Tin/Lead Alloy Solder Charge</p> <p>-2 = Lead-Free Solder Charge</p>	<p>-A = Alignment Pins (Required. Arrays will not self-center on solder pads)</p> <p>-K = Polyimide film Pick & Place Pad</p> <p>-TR = Tape & Reel</p>		

-10, -15, -20, -30, -40, -50
(-10 only available in 04 row)
(-15 is only available in 4 Row with -02.0 lead style and 10 row with any lead style)

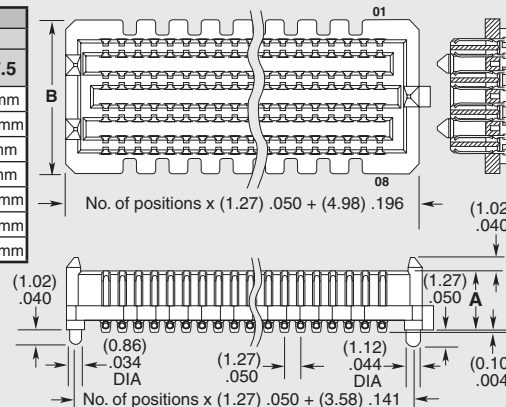
NO. OF ROWS	B
-04	(7.06) .278
-05, -06	(9.60) .378
-08	(12.14) .478
-10	(14.68) .578

SEAM LEAD STYLE	MATED HEIGHTS SEAF LEAD STYLE			
	-05.0	-06.0	-06.5	-07.5
-02.0	7 mm	8 mm	8.5 mm	9.5 mm
-03.0	8 mm	9 mm	9.5 mm	10.5 mm
-03.5	8.5 mm	9.5 mm	10 mm	11 mm
-06.5	11.5 mm	12.5 mm	13 mm	14 mm
-07.0	12 mm	13 mm	13.5 mm	14.5 mm
-09.0	14 mm	15 mm	15.5 mm	16.5 mm
-11.0	16 mm	17 mm	17.5 mm	18.5 mm

Notes: Patented

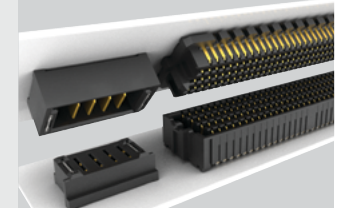
IPC-A-610F and IPC J-STD-001F Class 3 solder joint.

Some sizes, styles and options are non-standard, non-returnable.



LEAD STYLE	A
-02.0	(4.60) .181
-03.0	(5.59) .220
-03.5	(6.10) .240
-06.5	(9.14) .360
-07.0	(9.60) .378
-09.0	(11.60) .457
-11.0	(13.60) .535

POWER/SIGNAL APPLICATION



Compatible with UMPT/UMPS for flexible two-piece power/signal solutions