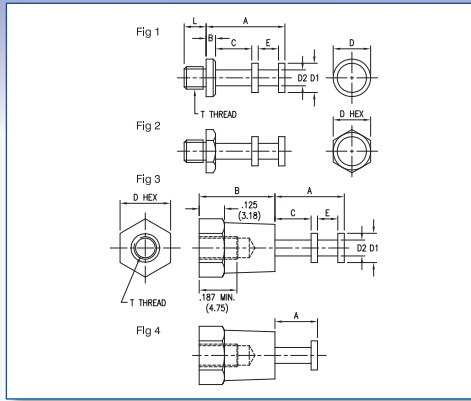


# SOLDER TERMINALS - TURRET, THREAD MOUNT



Dimensions in inches (mm)

How to order code

**160 - XXXX - XX - XX - 00**

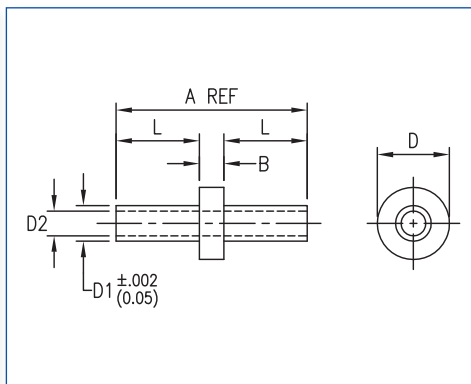
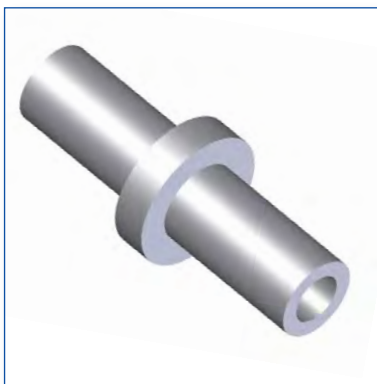
Basic Part No. | Finish

Material Code Table		
Component	Material	RoHS
Terminal	Brass	✓

Finish Code Table		
Dash No.	Terminal Finish	RoHS
-01	Silver	✓
-03	Gold over Nickel	✓
-04	Electro-Tin	✓
-05	Electro-Solder	X

Fig.	Basic Part No.	L	A	B	C	D	D1	D2	E	T
1	160-1582 -01	.125 (3.18)	.357 (9.07)	.047 (1.19)	.149 (3.78)	.188 (4.78)	.145 (3.68)	.065 (1.65)	.099 (2.51)	4 - 40
	-02	.188 (4.78)								
2	160-2051 -01	.125 (3.18)	.357 (9.07)	.047 (1.19)	.149 (3.78)	.188 (4.78)	.145 (3.68)	.065 (1.65)	.099 (2.51)	4 - 40
	-02	.188 (4.78)								
3	160-2381 -01	-	.344 (8.74)	.375 (9.53)	.187 (4.75)	.250 (6.35)	.140 (3.56)	.078 (1.98)	.095 (2.41)	4 - 40
4	160-2380 -01	-	.218 (5.54)	.375 (9.53)	.187 (4.75)	.250 (6.35)	.140 (3.56)	.078 (1.98)	-	4 - 40

# SOLDER TERMINALS - EYELET



Dimensions in inches (mm)  
See page 93 for recommended Anvil and Punch

How to order code

**180 - 146X - 02 - XX - 00**

Basic Part No. | Finish

Material Code Table		
Component	Material	RoHS
Terminal	Brass	✓

Finish Code Table		
Dash No.	Terminal Finish	RoHS
-04	Electro-Tin	✓
-05	Electro-Solder	X

Basic Part No.	A	B	D	D1	D2	L	Mtg. Hole Diameter	Wire Size
180-1460 -02	.200 (5.08)	.020 (0.51)	.078 (1.98)	.046 (1.17)	.028 (0.71)	.090 (2.29)	.052 (1.32)	24-23 AWG
180-1461 -02	.200 (5.08)	.020 (0.51)	.078 (1.98)	.050 (1.27)	.033 (0.84)	.090 (2.29)	.055 (1.40)	22-21 AWG
180-1462 -02	.200 (5.08)	.020 (0.51)	.094 (2.39)	.059 (1.50)	.040 (1.02)	.090 (2.29)	.063 (1.61)	20-19 AWG