

# General Specifications

## Electrical Capacity (Resistive Load)

<b>Power Level (silver):</b>	3A @ 125V AC
<b>Logic Level (gold):</b>	0.4VA maximum @ 28V AC/DC maximum (Applicable Range 0.1mA ~ 0.1A @ 20mV ~ 28V)
<b>Logic/Power Level: (gold over silver)</b>	Combines silver & gold ratings
	Note: Find additional explanation of dual rating & operating range in Supplement section.

## Other Ratings

<b>Contact Resistance:</b>	20 milliohms maximum for silver; 30 milliohms maximum for gold
<b>Insulation Resistance:</b>	1,000 megohms minimum @ 500V DC
<b>Dielectric Strength:</b>	1,000V AC minimum between contacts for 1 minute minimum; 1,500V AC minimum between contacts & case for 1 minute minimum
<b>Mechanical Life:</b>	200,000 operations minimum
<b>Electrical Life:</b>	25,000 operations minimum for silver; 100,000 operations minimum for gold
<b>Nominal Operating Force:</b>	Single pole 2.45N; double pole 3.92N
<b>Travel</b>	Pretravel .024" (0.6mm); Overtravel .016" (0.4mm); Total Travel .039" (1.0mm)

## Materials & Finishes

<b>Plunger:</b>	Brass with nickel plating
<b>Bushing:</b>	Brass with nickel plating
<b>Frame:</b>	Stainless steel
<b>Case:</b>	Polybutylene terephthalate (PBT) (UL94V-0)
<b>Base:</b>	Diallyl phthalate resin (UL94V-0)
<b>Movable Contactor:</b>	Phosphor bronze with silver or gold plating
<b>Movable Contacts:</b>	Silver alloy (code W); copper with gold plating (code G); or silver alloy with gold plating (code A)
<b>Stationary Contacts:</b>	Silver alloy with silver plating (code W); copper or brass with gold plating (code G); or silver with gold plating (code A)
<b>Terminals:</b>	Copper or brass with silver plating; copper or brass with gold plating

## Environmental Data

<b>Operating Temp Range:</b>	-30°C through +85°C (-22°F through +185°F)
<b>Humidity:</b>	90 ~ 95% humidity for 96 hours @ 40°C (104°F)
<b>Vibration:</b>	10 ~ 55Hz with peak-to-peak amplitude of 1.5mm traversing the frequency range & returning in 1 minute; 3 right angled directions for 2 hours
<b>Shock:</b>	50G (490m/s <sup>2</sup> ) acceleration (tested in 6 right angled directions, with 3 shocks in each direction)

## Installation

<b>Mounting Torque:</b>	1.5Nm (13.0 lb•in) for double nut; 0.7Nm (6.0 lb•in) for single nut
<b>Cap Installation Force:</b>	80.0N (18.0 lbf) maximum downward force on actuator
<b>Soldering:</b>	Wave Soldering (PC version): See Profile B in Supplement section. Manual Soldering: See Profile B in Supplement section.
<b>Cleaning:</b>	These devices are not process sealed. Hand clean locally using alcohol based solution. See Cleaning Specifications in Supplement section.

## Standards & Certifications

<b>Flammability Standards:</b>	UL94V-0 case & base
<b>UL:</b>	<b>File No. E44145 - Recognized only when ordered with marking on switch.</b> Add "/U" or "/CUL" before dash in part number to order UL recognized switch. All single and double pole models recognized at 3A @ 125V AC or 0.4VA max. @ 28V DC max.
<b>CSA:</b>	<b>File No. 023535_0_000 - Certified only when ordered with marking on switch.</b> Add "/C" before dash in part number to order CSA certified switch. Single pole models with PC, solder lug, or Wirewrap terminals & double pole with PC or Wirewrap terminals certified at 3A @ 125V AC or 0.4VA @ 28V maximum.

# Distinctive Characteristics

Snap-acting mechanism gives smooth actuation, short stroke, light touch, and audible feedback. This mechanism also provides long mechanical life.

High torque bushing construction prevents rotation or separation from frame during installation.

Antijamming design protects contacts from damage due to excessive downward force on the actuator.

Compatible companions with M series toggles. Body, bushing, and footprint dimensions ideal for mounting MB2400 pushbuttons and M toggles next to one another.

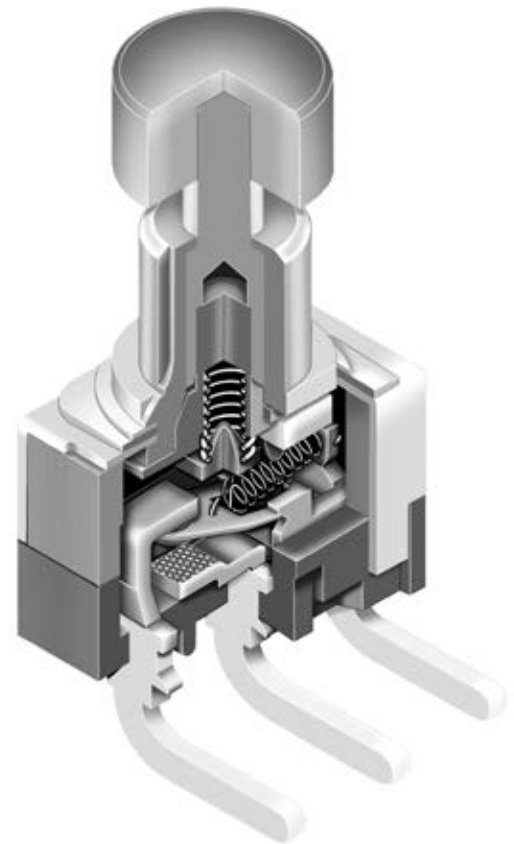
Stainless steel frame resists corrosion.

Longer center solder lug terminal simplifies wiring and soldering.

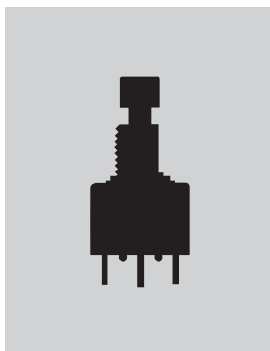
Silver contacts of specially composed alloy for hardness.


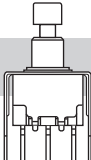
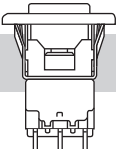
Epoxy sealed terminals prevent entry of solder flux and other contaminants.

Prominent external insulating barriers increase insulation resistance and dielectric strength.



Actual Size



	Bushing Mount	Page C98
	Bracket PC Mount	Page C102
	Snap-in Mount	Page C108

- Toggle
- Rockers
- Pushbuttons**
- Illuminated PB
- Programmable
- Keylocks
- Rotaries
- Slides
- Tactiles
- Tilt
- Touch
- Indicators
- Accessories
- Supplement

### TYPICAL SWITCH ORDERING EXAMPLE

**MB24**

**11**

**E1**

**W**

**01**

**F**

**A**

#### Poles & Circuits

<b>11</b>	SPDT	ON	(ON)
<b>61</b>	DPDT	ON	(ON)
( ) = Momentary			

#### Contact Materials & Ratings

<b>W</b>	Silver Rated 3A @ 125V AC
<b>G</b>	Gold Rated 0.4VA max @ 28V AC/DC max
<b>A</b>	Gold over Silver Rated 3A @ 125V AC & 0.4VA max @ 28V AC/DC max

#### Caps

<b>F</b>	.201" (5.1mm) Diameter
<b>H</b>	.295" (7.5mm) Diameter

#### Bushings

<b>E1</b>	.285" (7.24mm) Threaded with D Flat
<b>E2</b>	.285" (7.24mm) Smooth with D Flat
<b>A1</b>	.280" (7.1mm) Threaded with Keyway
<b>A2</b>	.280" (7.1mm) Smooth with Keyway
<b>S1</b>	.350" (8.9mm) Threaded with Keyway
<b>S2</b>	.350" (8.9mm) Smooth with Keyway

#### Terminals

<b>01</b>	Solder Lug
<b>03</b>	.250" (6.35mm) Straight PC
<b>05</b>	.425" (10.8mm) Wirewrap
<b>06</b>	.750" (19.05mm) Wirewrap
<b>07</b>	.964" (24.5mm) Wirewrap

#### Cap Colors

<b>A</b>	Black
<b>B</b>	White
<b>C</b>	Red

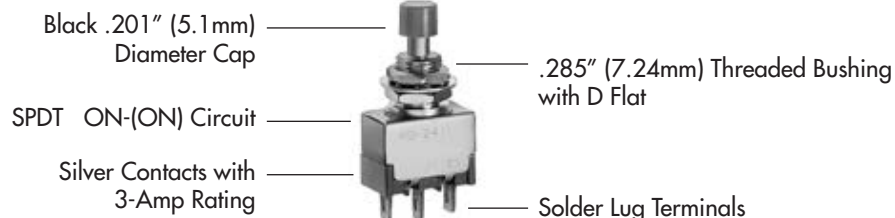
#### IMPORTANT:



Switches are supplied without UL, cULus & CSA marking unless specified.  
**UL, cULus & CSA recognized only when ordered with marking on the switch.**  
 Specific models, ratings, & ordering instructions are noted on the General Specifications page.

#### DESCRIPTION FOR TYPICAL ORDERING EXAMPLE

**MB2411E1W01-FA**



Toggles  
 Rockers  
 Pushbuttons  
 Illuminated PB  
 Programmable  
 Keylocks  
 Rotaries  
 Slides  
 Tactiles  
 Tilt  
 Touch  
 Indicators  
 Accessories  
 Supplement

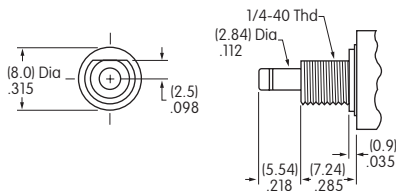
## POLES & CIRCUITS

Pole	Model	Plunger Position ( ) = Momentary		Connected Terminals		Throw & Switch Schematics
		Normal	Down	Normal	Down	
						Note: Terminal numbers are not actually on the switch.
SP	MB2411	ON	(ON)	1-3	1-2	SPDT
DP	MB2461	ON	(ON)	1-3 4-6	1-2 4-5	DPDT

## BUSHINGS

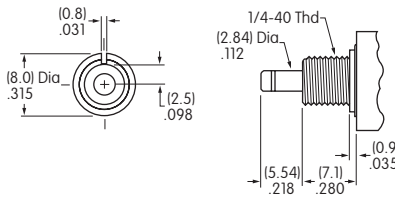
Note: Plunger selection is not required for MB2400 pushbuttons. The plunger can be used with or without a cap.

**E1** .285" (7.24mm)  
Threaded with D Flat



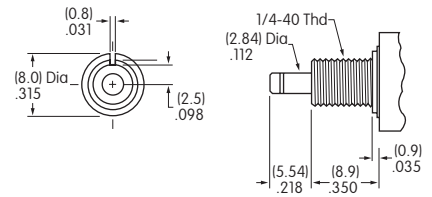
Maximum Panel Thickness with Standard Hardware: .068" (1.74mm)

**A1** .280" (7.1mm)  
Threaded with Keyway



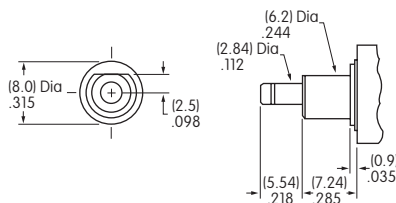
Maximum Panel Thickness with Standard Hardware: .068" (1.74mm)

**S1** .350" (8.9mm)  
Threaded with Keyway

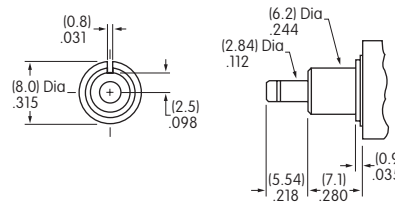


Maximum Panel Thickness with Standard Hardware: .134" (3.40mm)

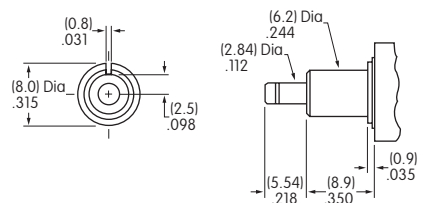
**E2** .285" (7.24mm)  
Smooth with D Flat



**A2** .280" (7.1mm)  
Smooth with Keyway

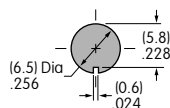


**S2** .350" (8.9mm)  
Smooth with Keyway

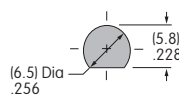


### Panel Cutouts

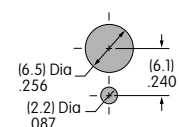
For A1, A2, S1, or S2 Bushing  
with Keyway



For E1 or E2 Bushing  
with D Flat



With  
Optional Locking Ring



Standard hardware includes 2 hex nuts & 1 lockwasher.  
Hardware is illustrated following the Typical Switch Dimension drawings.

## CONTACT MATERIALS & RATINGS

**W**

Silver over Silver

Power Level

3A @ 125V AC

**G**

Gold over Brass or Copper

Logic Level

0.4VA maximum @ 28V AC/DC maximum

Note: Complete explanation of operating range in Supplement section.

**A**

Gold over Silver

Power Level  
or Logic Level

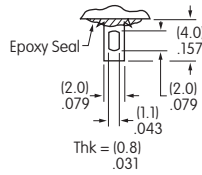
3A @ 125V AC  
or 0.4VA maximum @ 28V AC/DC maximum

Note: This dual rated option is suitable when two or more identical switches are used in logic and in power circuits within the same application. See Supplement section for complete explanation of dual rating and operating range.

## TERMINALS

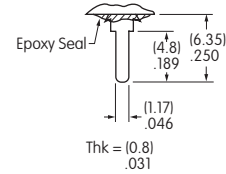
**01**

Solder Lug



**03**

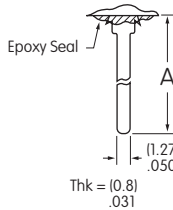
.250" (6.35mm)  
Straight PC



Wirewrap or Extended PC

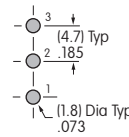
**05**

.425"  
(10.8mm)

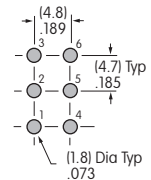


Refer to footprints if using  
as extended PC terminal.

Dimension A = terminal  
lengths as shown beside  
the code boxes at left.



Single Pole



Double Pole

**06**

.750"  
(19.05mm)

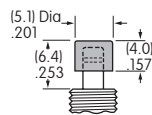
**07**

.964"  
(24.5mm)

## CAPS & CAP COLORS

**F**

AT475  
.201" (5.1mm)  
Diameter Cap



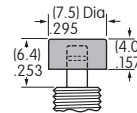
Material: Polyamide

Finish: Glossy



**H**

AT496  
.295" (7.5mm)  
Diameter Cap



Material: Polyamide

Finish: Glossy



Cap Colors  
Available:

**A**

Black

**B**

White

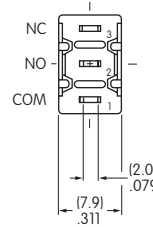
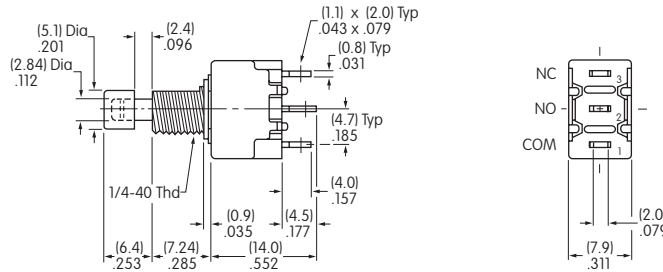
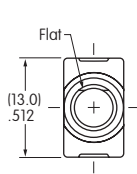
**C**

Red

## TYPICAL SWITCH DIMENSIONS

### Single Pole

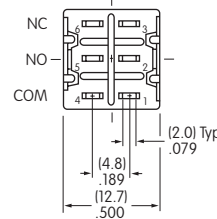
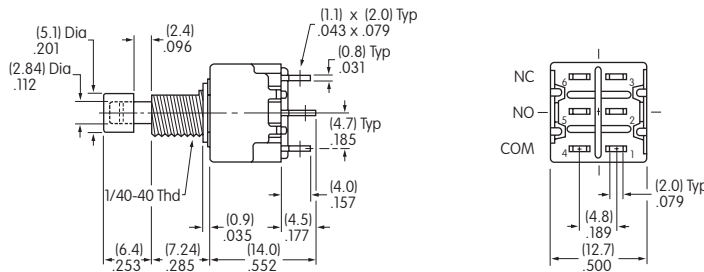
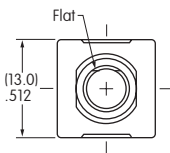
### Solder Lug



MB2411E1W01-FA

### Double Pole

### Solder Lug

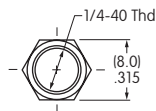


MB2461E1W01-FA

## HARDWARE

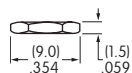
### Standard Hardware

#### AT513H Inch Threaded Hexagon Nut



2 included with each switch

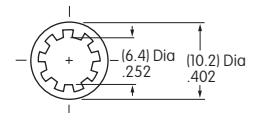
Material:  
Brass with Nickel Plating



#### AT509 Lockwasher

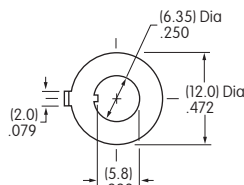
1 included with each switch

Material:  
Steel with Zinc/Chromate



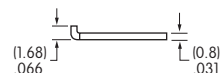
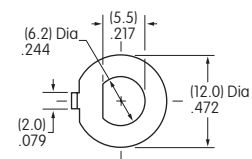
#### AT507H Locking Ring for A1 or S1 Bushing

Material:  
Steel with Zinc/Chromate



#### AT515 Locking Ring for E1 Bushing

Material:  
Steel with Zinc/Chromate



### TYPICAL SWITCH ORDERING EXAMPLE

**MB24**

**11**

**A2**

**G**

**40**

**F**

**A**

#### Poles & Circuits

11	SPDT	ON	(ON)
61	DPDT	ON	(ON)

( ) = Momentary

#### Bushings

A2	.280" (7.1mm) Smooth with Keyway
A1	.280" (7.1mm) Threaded with Keyway
E2	.285" (7.24mm) Smooth with D Flat
E1	.285" (7.24mm) Threaded with D Flat
S2	.350" (8.9mm) Smooth with Keyway
S1	.350" (8.9mm) Threaded with Keyway

#### Contact Materials & Ratings

W	Silver Rated 3A @ 125V AC
G	Gold Rated 0.4VA max @ 28V AC/DC max
A	Gold over Silver Rated 3A @ 125V AC & 0.4VA max @ 28V AC/DC max

#### Caps

F	.201" (5.1mm) Dia.
H	.295" (7.5mm) Dia.

#### Cap Colors

A	Black
B	White
C	Red

#### Terminals

##### With Bracket

13	.250" (6.35mm) Straight PC with .465" (11.8mm) Bracket
15	.425" (10.8mm) Straight PC with .630" (16.0mm) Bracket
17	.964" (24.5mm) Straight PC with 1.150" (29.2mm) Bracket

##### With Reinforced Bracket

23	.250" (6.35mm) Straight PC with .465" (11.8mm) Bracket
25	.425" (10.8mm) Straight PC with .630" (16.0mm) Bracket
26	.750" (19.05mm) Straight PC with .953" (24.2mm) Bracket

##### With Terminal Support

30	Right Angle PC
40	Vertical PC

### IMPORTANT:



Switches are supplied without UL, cULus & CSA marking unless specified. **UL, cULus & CSA recognized only when ordered with marking on the switch.** Specific models, ratings, & ordering instructions are noted on the General Specifications page.

### DESCRIPTION FOR TYPICAL ORDERING EXAMPLE

**MB2411A2G40-FA**

.280" (7.1mm) Smooth Bushing with Keyway  
Black .201" (5.1mm) Diameter Cap



SPDT ON-(ON) Circuit  
Vertical PC Terminals  
Gold Contacts with 0.4VA Rating

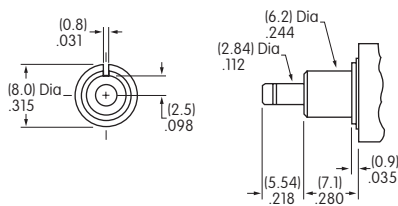
## POLES & CIRCUITS

Pole	Model	Plunger Position ( ) = Momentary		Connected Terminals		Throw & Switch Schematics
		Normal	Down	Normal	Down	
						Note: Terminal numbers are not actually on the switch.
SP	MB2411	ON	(ON)	1-3	1-2	SPDT
DP	MB2461	ON	(ON)	1-3 4-6	1-2 4-5	DPDT

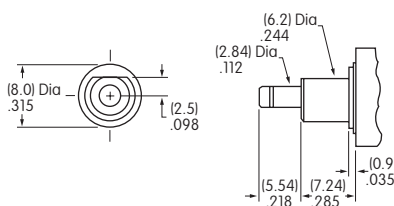
## BUSHINGS

Note: Plunger selection is not required for MB2400 pushbuttons.  
The plunger can be used with or without a cap.

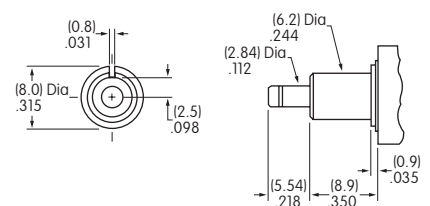
**A2** .280" (7.1mm)  
Smooth with Keyway



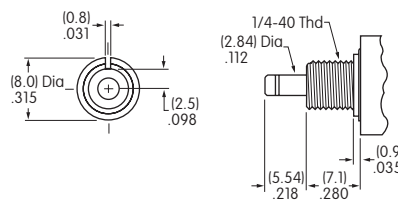
**E2** .285" (7.24mm)  
Smooth with D Flat



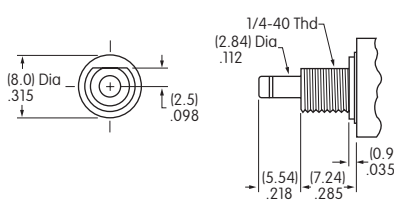
**S2** .350" (8.9mm)  
Smooth with Keyway



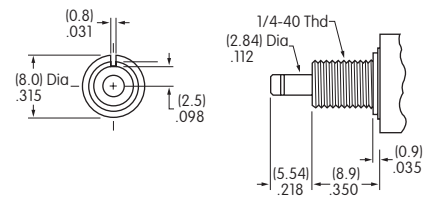
**A1** .280" (7.1mm)  
Threaded with Keyway



**E1** .285" (7.24mm)  
Threaded with D Flat



**S1** .350" (8.9mm)  
Threaded with Keyway



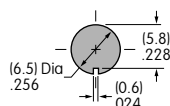
Maximum Panel Thickness with  
Standard Hardware: .068" (1.74mm)

Maximum Panel Thickness with  
Standard Hardware: .068" (1.74mm)

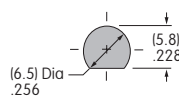
Maximum Panel Thickness with  
Standard Hardware: .134" (3.40mm)

### Panel Cutouts

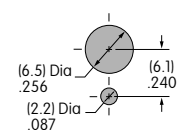
For A1, A2, S1, or S2 Bushing  
with Keyway



For E1 or E2 Bushing  
with D Flat



With  
Optional Locking Ring



Standard hardware includes 2 hex nuts & 1 lockwasher.  
Hardware is illustrated following the Typical Switch Dimension drawings.

Toggles  
Rockers  
Pushbuttons  
Illuminated PB  
Programmable  
Keylocks  
Rotaries  
Slides  
Tactiles  
Tilt  
Touch  
Indicators  
Accessories  
Supplement



### CONTACT MATERIALS & RATINGS

**W**

Silver over Silver

Power Level

3A @ 125V AC

**G**

Gold over Brass or Copper

Logic Level

0.4VA maximum @ 28V AC/DC maximum

Note: Complete explanation of operating range in Supplement section.

**A**

Gold over Silver

Power Level  
or Logic Level

3A @ 125V AC  
or 0.4VA maximum @ 28V AC/DC maximum

Note: This dual rated option is suitable when two or more identical switches are used in logic and in power circuits within the same application. See Supplement section for complete explanation of dual rating and operating range.

### TERMINALS

#### Straight PC Mount with Bracket

#### Straight PC Mount with Reinforced Bracket

**13**

.250" (6.35mm)  
Terminal with  
.465" (11.8mm)  
Bracket

**15**

.425" (10.8mm)  
Terminal with  
.630" (16.0mm)  
Bracket

**17**

.964" (24.5mm)  
Terminal with  
1.150" (29.2mm)  
Bracket

**23**

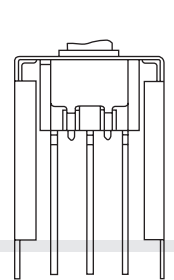
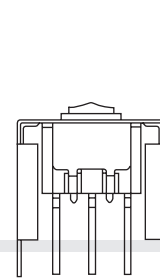
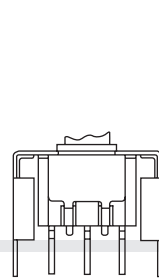
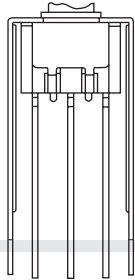
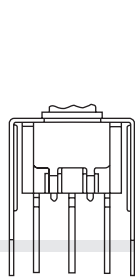
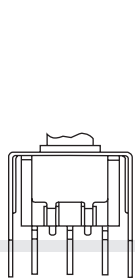
.250" (6.35mm)  
Terminal with  
.465" (11.8mm)  
Bracket

**25**

.425" (10.8mm)  
Terminal with  
.630" (16.0mm)  
Bracket

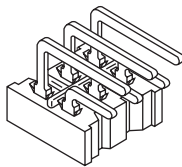
**26**

.750" (19.05mm)  
Terminal with  
.953" (24.2mm)  
Bracket



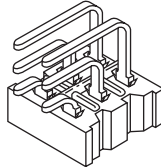
**30**

Right Angle PC



**40**

Vertical PC

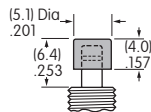


PCB footprints are on the following  
Typical Switch Dimension pages.

### CAPS & CAP COLORS

**F**

AT475  
.201" (5.1mm)  
Diameter Cap

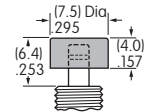


Material: Polyamide  
Finish: Glossy



**H**

AT496  
.295" (7.5mm)  
Diameter Cap



Material: Polyamide  
Finish: Glossy



Cap Colors  
Available:

**A**

Black

**B**

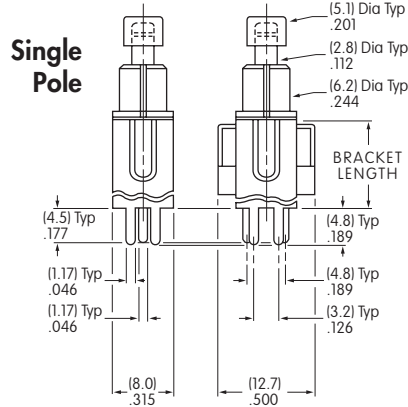
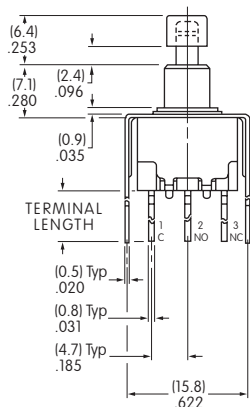
White

**C**

Red

## TYPICAL SWITCH DIMENSIONS

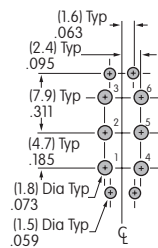
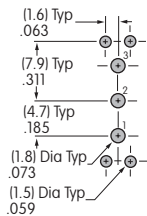
### Straight PC • Bracket



Double Pole

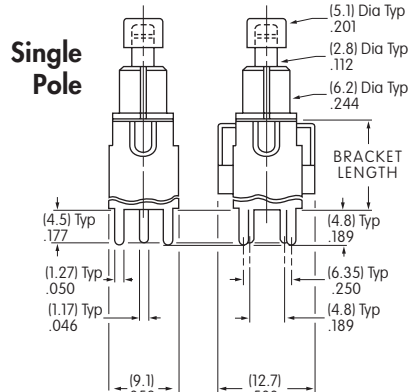
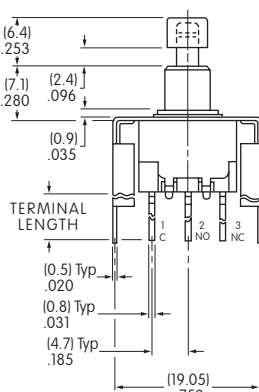


**MB2411A2G13-FA**



Terminal Code:	Terminal Length:	Bracket Length:
<b>13</b>	.250 (6.35mm)	.465 (11.8mm)
<b>15</b>	.425 (10.8mm)	.630 (16.0mm)
<b>17</b>	.964 (24.5mm)	1.150 (29.2mm)

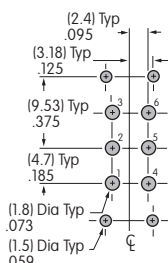
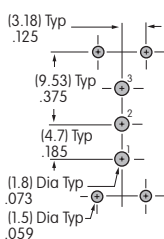
### Straight PC • Reinforced Bracket



Double Pole



**MB2411A2G23-FA**

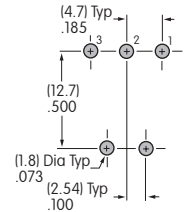
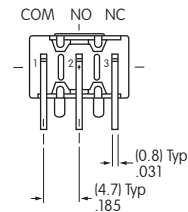
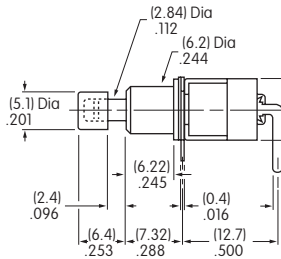
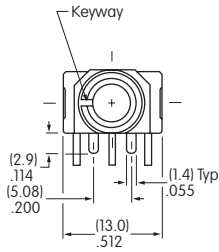


Terminal Code:	Terminal Length:	Bracket Length:
<b>23</b>	.250 (6.35mm)	.465 (11.8mm)
<b>25</b>	.425 (10.8mm)	.630 (16.0mm)
<b>26</b>	.750 (19.05mm)	.953 (24.2mm)

## TYPICAL SWITCH DIMENSIONS

### Right Angle PC

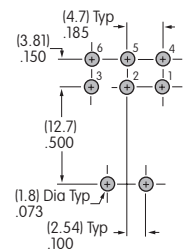
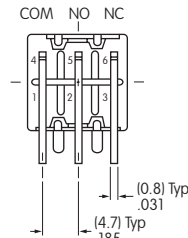
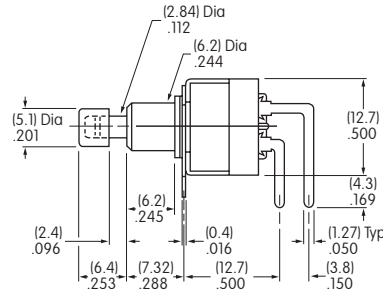
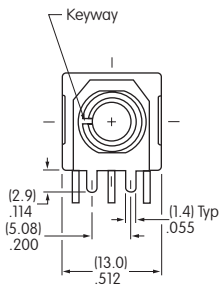
### Single Pole



**MB2411A2G30-FA**

### Right Angle PC

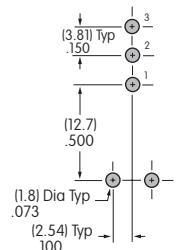
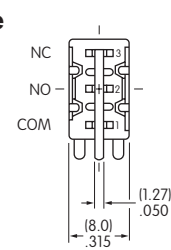
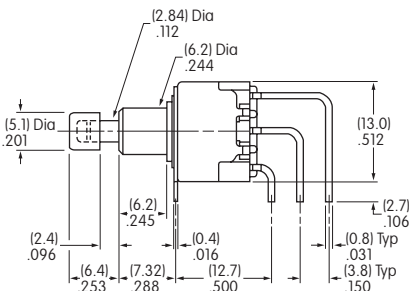
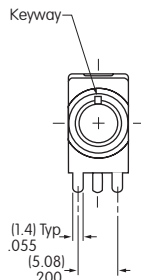
### Double Pole



**MB2461A2G30-FA**

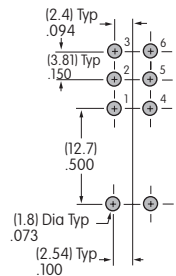
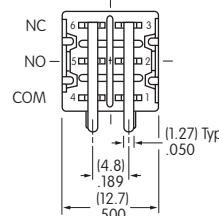
### Vertical PC

### Single Pole



**MB2411A2G40-FA**

### Double Pole



Toggles  
Rockers  
Pushbuttons  
Illuminated PB  
Programmable  
Keylocks  
Rotaries  
Slides  
Tactiles  
Tilt  
Touch  
Indicators  
Accessories  
Supplement

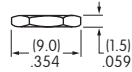
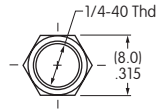
## HARDWARE

### Standard Hardware

#### AT513H Inch Threaded Hexagon Nut

2 included with each switch

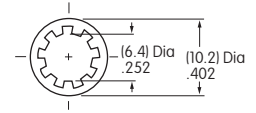
Material:  
Brass with Nickel Plating



#### AT509 Lockwasher

1 included with each switch

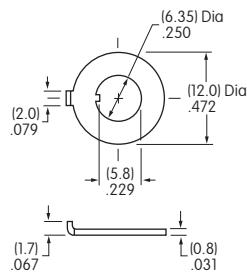
Material:  
Steel with Zinc/Chromate



### Optional Hardware

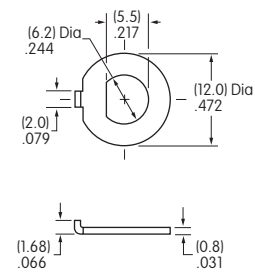
#### AT507H Locking Ring for A1 or S1 Bushing

Material:  
Steel with Zinc/Chromate



#### AT515 Locking Ring for E1 Bushing

Material:  
Steel with Zinc/Chromate



Toggles

Rockers

**C** Pushbuttons

Illuminated PB

Programmable

Keylocks

Rotaries

Slides

Tactiles

Tilt

Touch

Indicators

Accessories

Supplement

### TYPICAL SWITCH

**MB24**

**11**

**J**

**W**

**01**

**C**

#### Poles & Circuits

<b>11</b>	SPDT	ON	(ON)
<b>61</b>	DPDT	ON	(ON)
( ) = Momentary			

#### Contact Materials & Ratings

<b>W</b>	Silver Rated 3A @ 125V AC
<b>G</b>	Gold Rated 0.4VA max @ 28V AC/DC max
<b>A</b>	Gold over Silver Rated 3A @ 125V AC & 0.4VA max @ 28V AC/DC max

#### Cap & Cap Colors

<b>A</b>	Black
<b>B</b>	White
<b>C</b>	Red
<b>E</b>	Yellow
<b>F</b>	Green
<b>G</b>	Blue
<b>H</b>	Gray

#### Mounting Frame

<b>J</b>	Snap-in Frame
----------	---------------

#### Terminals

<b>01</b>	Solder Lug
<b>03</b>	.250" (6.35mm) Straight PC
<b>05</b>	.425" (10.8mm) Wirewrap
<b>06</b>	.750" (19.05mm) Wirewrap
<b>07</b>	.964" (24.5mm) Wirewrap

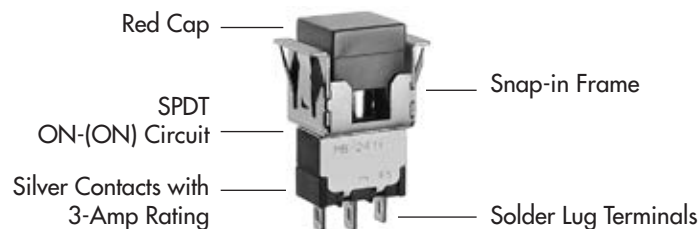
#### IMPORTANT:



Switches are supplied without UL, cULus & CSA marking unless specified.  
**UL, cULus & CSA recognized only when ordered with marking on the switch.**  
 Specific models, ratings, & ordering instructions are noted on the General Specifications page.

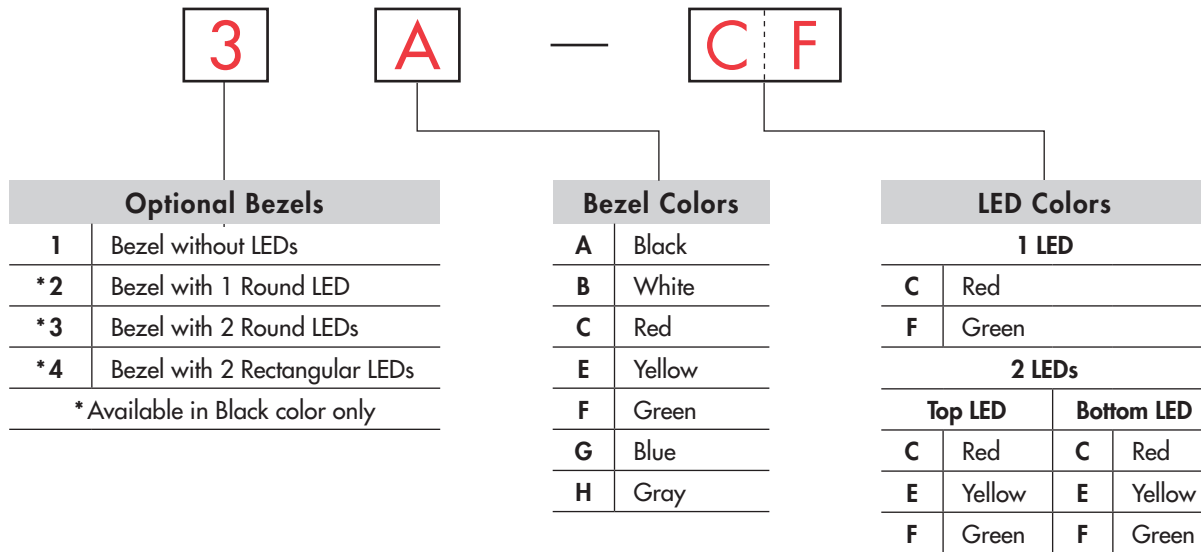
#### DESCRIPTION FOR TYPICAL ORDERING EXAMPLE

**MB2411JW01-C**



Toggles  
 Rockers  
 Pushbuttons  
 Illuminated PB  
 Programmable  
 Keylocks  
 Rotaries  
 Slides  
 Tactiles  
 Tilt  
 Touch  
 Indicators  
 Accessories  
 Supplement

## ORDERING EXAMPLE



### DESCRIPTION FOR TYPICAL ORDERING EXAMPLE

**MB2411JW01-C-3A-CF**



Toggles

Rockers

Pushbuttons

Illuminated PB

Programmable

Keylocks

Rotaries

Slides

Tactiles

Tilt

Touch

Indicators

Accessories

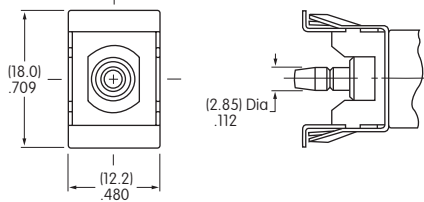
Supplement

## POLES & CIRCUITS

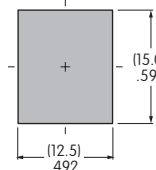
		Plunger Position ( ) = Momentary		Connected Terminals		Throw & Switch Schematics
Pole	Model	Normal	Down	Normal	Down	
SP	MB2411	ON	(ON)	1-3	1-2	SPDT 
DP	MB2461	ON	(ON)	1-3 4-6	1-2 4-5	DPDT 

## MOUNTING FRAME

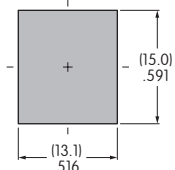
### J Snap-in Frame



Panel Cutout for Single Pole without Bezel



Panel Cutout for Double Pole without Bezel



Panel Thickness without Bezel: .039" ~ .157" (1.0mm ~ 4.0mm)  
 Panel Thickness with Bezel: .039" ~ .126" (1.0mm ~ 3.2mm)

## CONTACT MATERIALS & RATINGS

**W** Silver over Silver

Power Level

3A @ 125V AC

**G** Gold over Brass or Copper

Logic Level

0.4VA maximum @ 28V AC/DC maximum

Note: Complete explanation of operating range in Supplement section.

**A** Gold over Silver

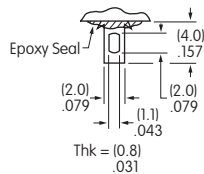
Power Level  
or Logic Level

3A @ 125V AC  
or 0.4VA maximum @ 28V AC/DC maximum

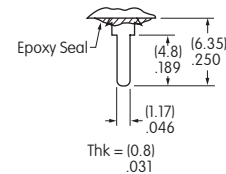
Note: This dual rated option is suitable when two or more identical switches are used in logic and in power circuits within the same application. See Supplement section for complete explanation of dual rating and operating range.

## TERMINALS

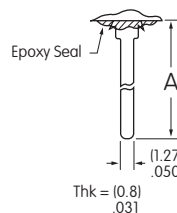
**01** Solder Lug



**03** .250" (6.35mm) Straight PC

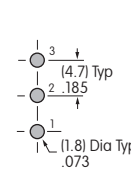


### Wirewrap or Extended PC

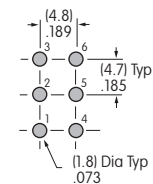


Refer to footprints if using as extended PC terminal.

Dimension A = terminal lengths as shown beside the code boxes at left.



Single Pole

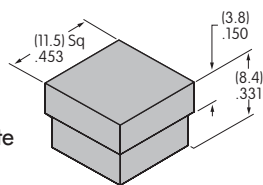


Double Pole

## CAP & CAP COLORS

**AT465**  
**.453" (11.5mm)**  
**Square Cap**

Material: Polycarbonate  
 Finish: Glossy



Contact factory for matte finish.

Legend details at end of this section.

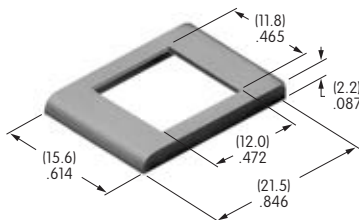
<b>A</b>	Black	<b>B</b>	White	<b>C</b>	Red	<b>E</b>	Yellow
<b>F</b>	Green	<b>G</b>	Blue	<b>H</b>	Gray		

## OPTIONAL SNAP-IN BEZELS & BEZEL COLORS

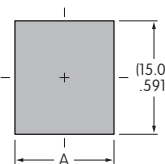
**1** **AT207 Bezel**

Material: Polycarbonate  
 Finish: Glossy

Contact factory for matte finish.



<b>A</b>	Black	<b>F</b>	Green
<b>B</b>	White	<b>G</b>	Blue
<b>C</b>	Red	<b>H</b>	Gray
<b>E</b>	Yellow		

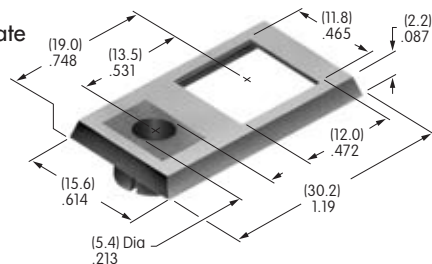


	Single Pole	Double Pole
A	(12.5)mm .492"	(13.1)mm .516"

**2** **AT208 Bezel for AT070 LED**

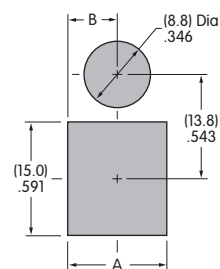
Material: Polycarbonate  
 Finish: Glossy

Contact factory for matte finish.



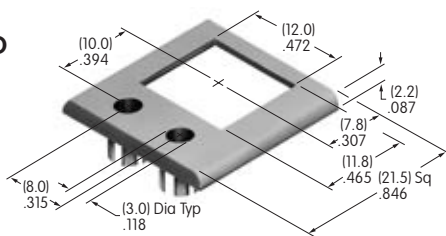
**A** Black  
 LED colors & specifications on next page.

	Single Pole	Double Pole
A	(12.5)mm .492"	(13.1)mm .516"
B	(6.25)mm .246"	(6.55)mm .258"



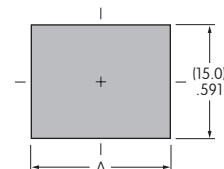
**3** **AT212 Bezel for AT617 LED**

Material: Polycarbonate  
 Finish: Semi-glossy



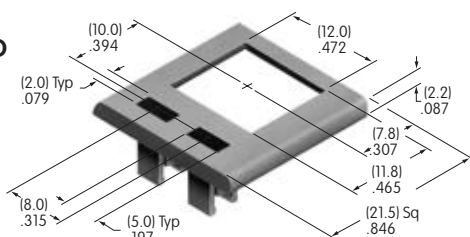
**A** Black  
 LED colors & specifications on next page.

	Single Pole	Double Pole
A	(18.4)mm .724"	(18.7)mm .736"



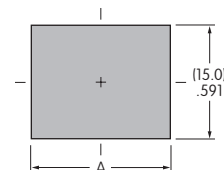
**4** **AT213 Bezel for AT618 LED**

Material: Polycarbonate  
 Finish: Semi-glossy



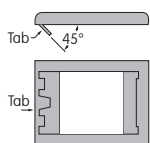
**A** Black  
 LED colors & specifications on next page.

	Single Pole	Double Pole
A	(18.4)mm .724"	(18.7)mm .736"

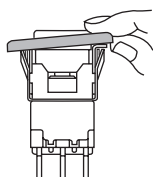


### Bezel Assembly

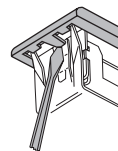
1. Pry out tab on bezel to a 45° angle.



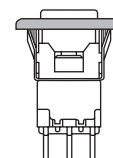
2. Insert switch frame under tab and snap on the bezel.



3. Push tab back into place.



4. Snap assembled bezel and switch into panel.

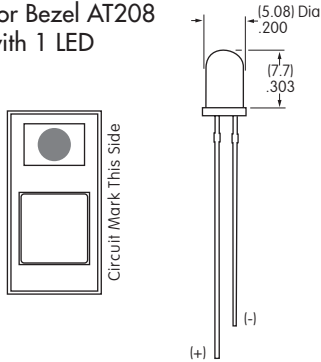




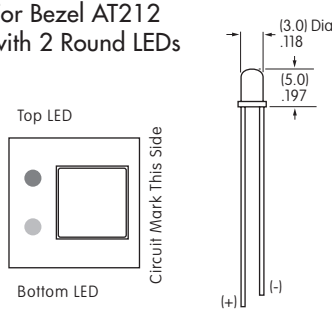
## LED COLORS & SPECIFICATIONS

### Bezel Orientation on Switch

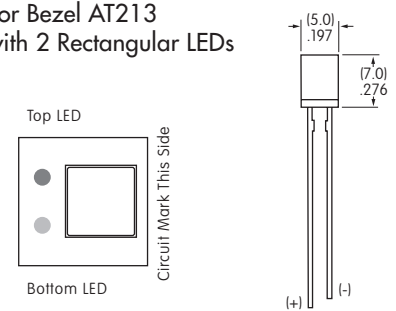
**AT070 LED**  
For Bezel AT208  
with 1 LED



**AT617 LED**  
For Bezel AT212  
with 2 Round LEDs



**AT618 LED**  
For Bezel AT213  
with 2 Rectangular LEDs



Note: Lead lengths may differ from manufacturing lot to lot. The longer lead is the anode (+).

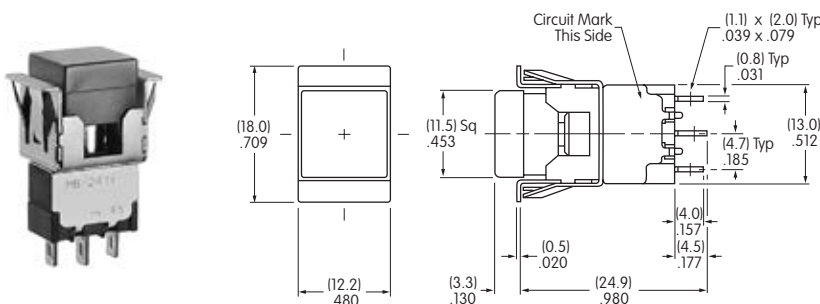
		AT070		AT617			AT618		
		<b>C</b>	<b>F</b>	<b>C</b>	<b>E</b>	<b>F</b>	<b>C</b>	<b>E</b>	<b>F</b>
	Color	Red	Green	Red	Yellow	Green	Red	Yellow	Green
Maximum Forward Current	$I_{FM}$	25mA	50mA	30mA	30mA	25mA	25mA	30mA	25mA
Typical Forward Current	$I_F$	20mA	30mA	20mA	20mA	20mA	20mA	20mA	20mA
Forward Voltage	$V_F$	2.8V	2.1V	2.0V	2.1V	2.25V	2.25V	2.1V	2.2V
Maximum Reverse Voltage	$V_{RM}$	4V	5V	5V	5V	5V	5V	5V	5V
Current Reduction Rate Above 25°C	$\Delta I_F$	0.33 mA/°C	0.40 mA/°C	0.40 mA/°C	0.40 mA/°C	0.33 mA/°C	0.33 mA/°C	0.40 mA/°C	0.33 mA/°C
Ambient Temperature Range (when used with a bezel)		-10° ~ +70°C		-15° ~ +70°C			-25° ~ +70°C		

The electrical specifications shown are determined at a basic temperature of 25°C.  
LED circuit is independent of switch operation. LED is colored in OFF state.

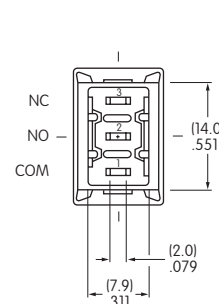
If the source voltage is greater than the rated voltage of the LED, a ballast resistor must be connected in series with the LED.  
The ballast resistor calculation and more lamp detail are shown in the Supplement section.

## TYPICAL SWITCH DIMENSIONS

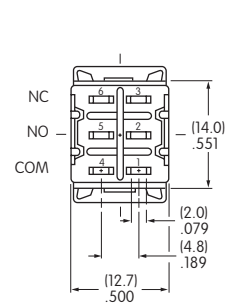
**Solder Lug**



**Single Pole**



**Double Pole**

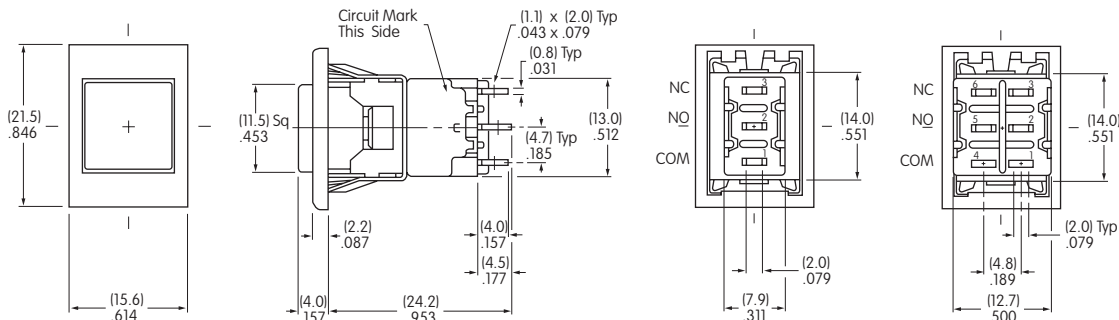


MB2411JW01-C

## TYPICAL SWITCH DIMENSIONS

### Single & Double Pole

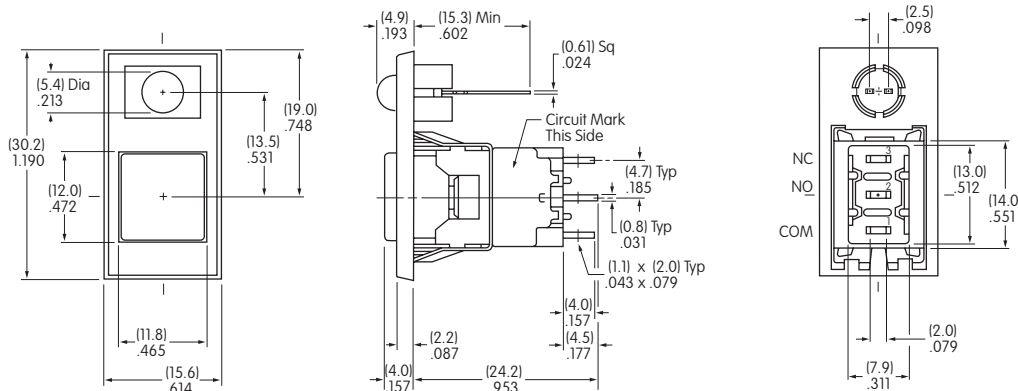
### Solder Lug • AT207 Bezel



MB2411JW01-C-1A

### Single Pole

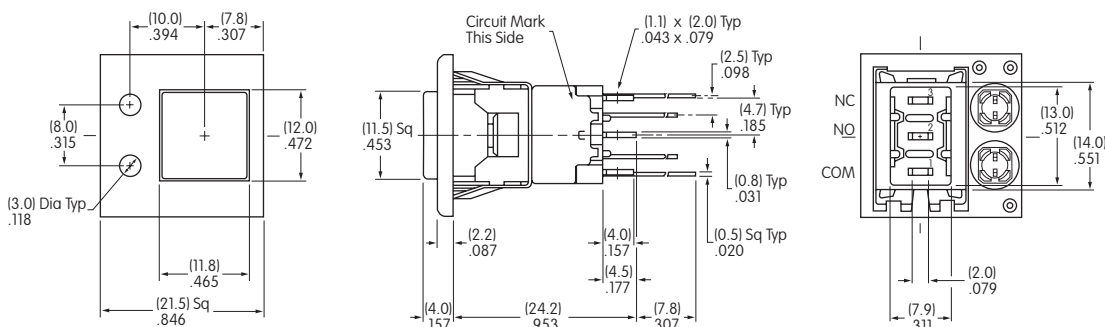
### Solder Lug • AT208 Bezel



MB2411JW01-C-2A-C

### Single Pole

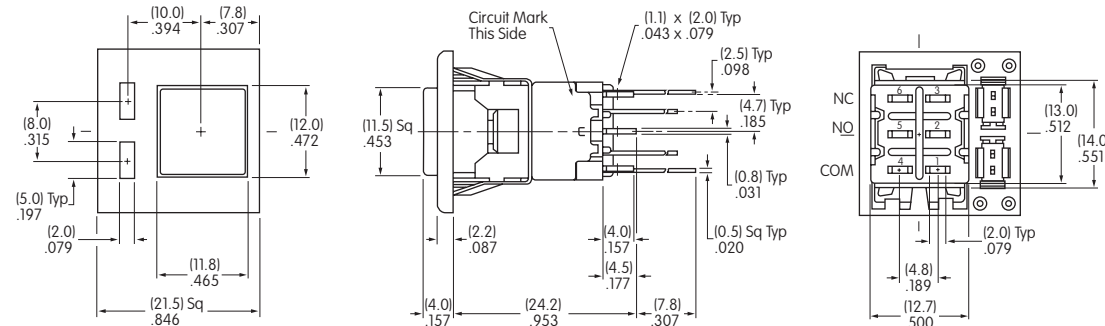
### Solder Lug • AT212 Bezel



MB2411JW01-C-3A-CF

### Double Pole

### Solder Lug • AT213 Bezel

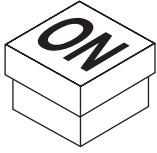


MB2461JW01-C-4A-CF

### LEGENDS

NKK Switches can provide custom legends for caps. Contact factory for more information.

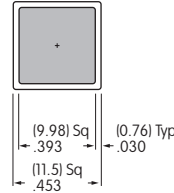
#### Suggested Printable Area for Cap



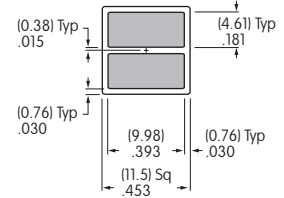
#### Recommended Print Method:

Screen Print or Pad Print

Epoxy based ink is recommended.



AT465



AT465

Shaded areas are printable areas.