

Features

Unregulated Converters

- Power sharing
- High isolation 3kVDC & 4kVDC for 1 second
- Efficiency up to 87%
- Wide operating temperature range from -40°C to +85°C
- UL60950 certified
- IEC/EN60950-1 certified

Description

The RKZ-xx2005D series features DC/DC converters which are especially designed for SiC mosfet drivers. The modules are available with input voltages of 5, 12, 15, or 24VDC with two asymmetric outputs of +20VDC and -5VDC. A special feature of this converter is output power sharing: the RKZ-xx2005D can be used with equal power (asymmetrical current) or equal current (asymmetrical power) loads. The modules offer 3kVDC or 4kVDC isolation. The operating temperature range of -40C to +100°C (with derating) meets harsh environmental requirements.

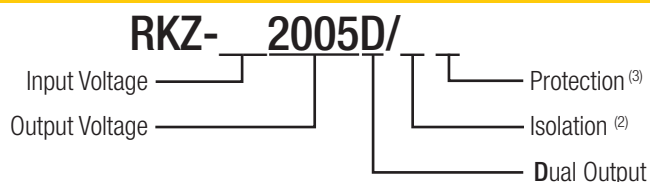
Selection Guide

Part Number	Input Voltage (VDC)	Output Voltage (VDC)	Output Current (mA)	Efficiency typ. (%)	max. Capacitive Load ⁽¹⁾ (μF)
RKZ-052005D	5	20/-5	50/-200 +/-80	86 85	100/1500
RKZ-122005D	12	20/-5	50/-200 +/-80	86	100/1500
RKZ-152005D	15	20/-5	50/-200 +/-80	86	100/1500
RKZ-242005D	24	20/-5	50/-200 +/-80	87	100/1500

Notes:

Note1: Max. capacitive load is tested at nominal input voltage and full load.

Model Numbering



Notes:

Note2: without suffix, standard 3kVDC isolation
add suffix "/H" for higher 4kVDC isolation

Note3: without suffix, without Short Circuit Protection
add suffix "/P" for continuous short circuit protection

Examples:

RKZ-052005D = 5Vin, 20/-5Vout, without SCP function + standard 3kVDC isolation
RKZ-12005D/HP = 12Vin, 20/-5Vout, with continuous SCP function + high 4kVDC isolation

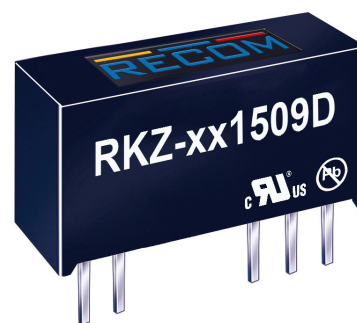
Specifications (measured at T_a = 25°C, nominal Input and full load after warm-up time unless otherwise noted)

BASIC CHARACTERISTICS				
Parameter	Condition	Min.	Typ.	Max.
Input Voltage Range		-10%		+10%
Operating Frequency		20kHz		
Minimum Load			0%	
Output Ripple and Noise ⁽⁴⁾			70mVp-p	150mVp-p
Notes: Note4: Ripple and Noise is measured with a 20MHz bandwidth and a 0.1μF ceramic capacitor.				
continued on next page				

RECOM
DC/DC Converter

RKZ-xx2005D

2 Watt
SIP7 for
SiC Application



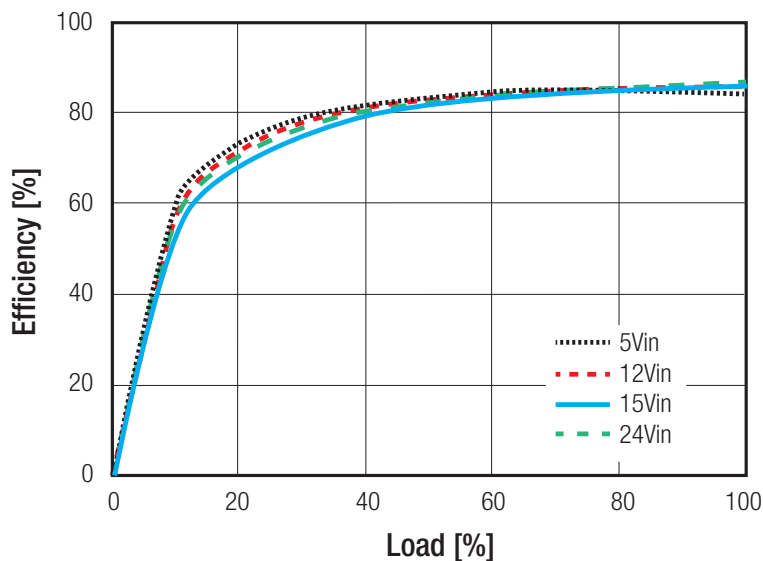
UL60950-1 certified
CSA C22.2 No. 60950-1-07 certified
IEC/EN60950-1 certified
EN55022 compliant



www.recom-power.com/eval-ref-boards

Specifications (measured at $T_a = 25^\circ\text{C}$, nominal Input and full load after warm-up time unless otherwise noted)

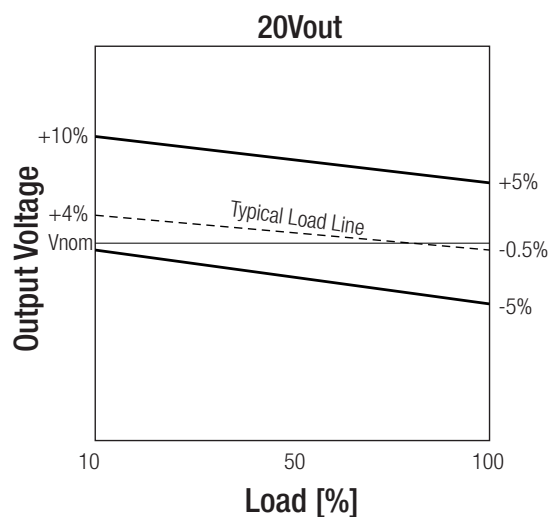
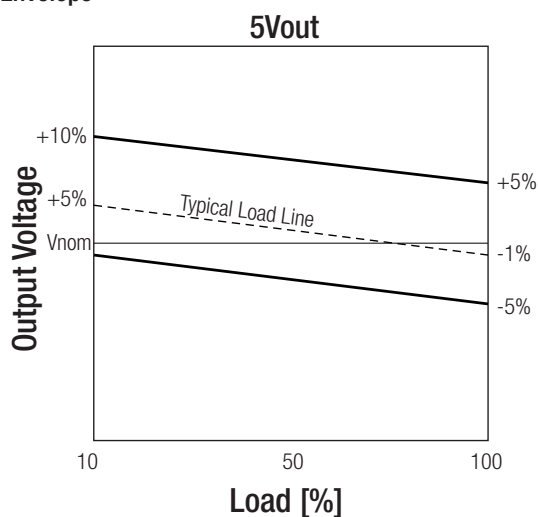
Efficiency vs. Load



REGULATIONS

Parameter	Condition	Values
Output Voltage Accuracy		$\pm 5\%$ max.
Line Voltage Regulation	low line to high line, full load and $1\%V_{in}$	$\pm 1.2\%$ typ.
Load Voltage Regulation	10% to 100% load	$\pm 5\%$ typ. / $\pm 10\%$ max.

Tolerance Envelope



PROTECTIONS

Parameter	Condition		Value
Short Circuit Protection (SCP)	only with "/P" suffix		continuous, automatic recovery
Isolation Voltage	I/P to O/P	without suffix with suffix "/H"	3kVDC / 1 second 4kVDC / 1 second
Isolation Capacitance			135pF max.
Isolation Resistance			10G Ω min.

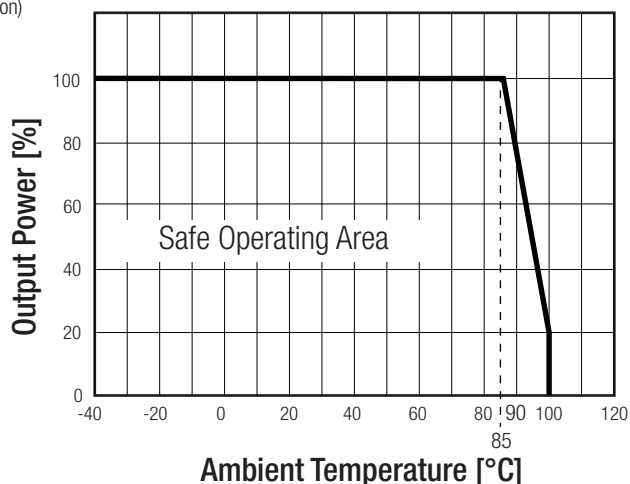
Specifications (measured at $T_a = 25^\circ\text{C}$, nominal input and full load after warm-up time unless otherwise noted)

ENVIRONMENTAL

Parameter	Condition	Value
Operating Temperature Range	free air convection, with derating	-40°C to $+100^\circ\text{C}$
Operating Humidity	non-condensing	5% - 95% RH max.
Vibration		MIL-STD-202G
MTBF	according to MIL-HDBK-217F $+25^\circ\text{C}$ $+85^\circ\text{C}$	1800×10^3 hours 560×10^3 hours

Derating Graph

(@ nominal V_{in} at chamber and free air convection)



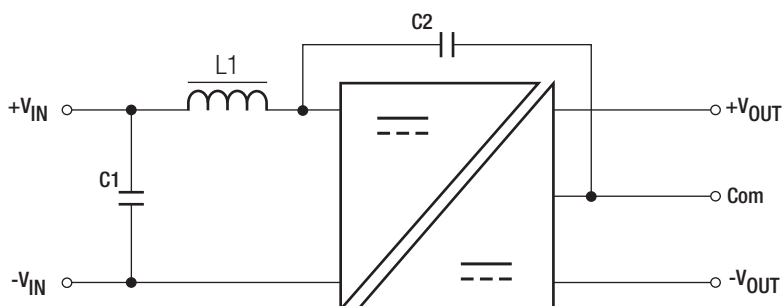
SAFETY AND CERTIFICATIONS

Certificate Type (Safety)	Report / File Number	Standard
Information Technology Equipment, General Requirements for Safety	SPCLVD1602031	IEC60950-1, 2nd Edition, 2005 EN60950-1, 2nd Edition, 2006
Information Technology Equipment, General Requirements for Safety	E358085	UL60950-1, 1st Edition, 2007 CAN/CSA C22.2 No. 60950-1-07, 1st Edition, 2006
RoHS 2		RoHS 6/6, 2011/65/EU

EMI Compliance

Condition	Standard / Criterion
Information technology equipment - Radio disturbance characteristics - Limits and methods of measurement	with external filter EN55022, Class B

EMC filter suggestion for EN55022 Class B



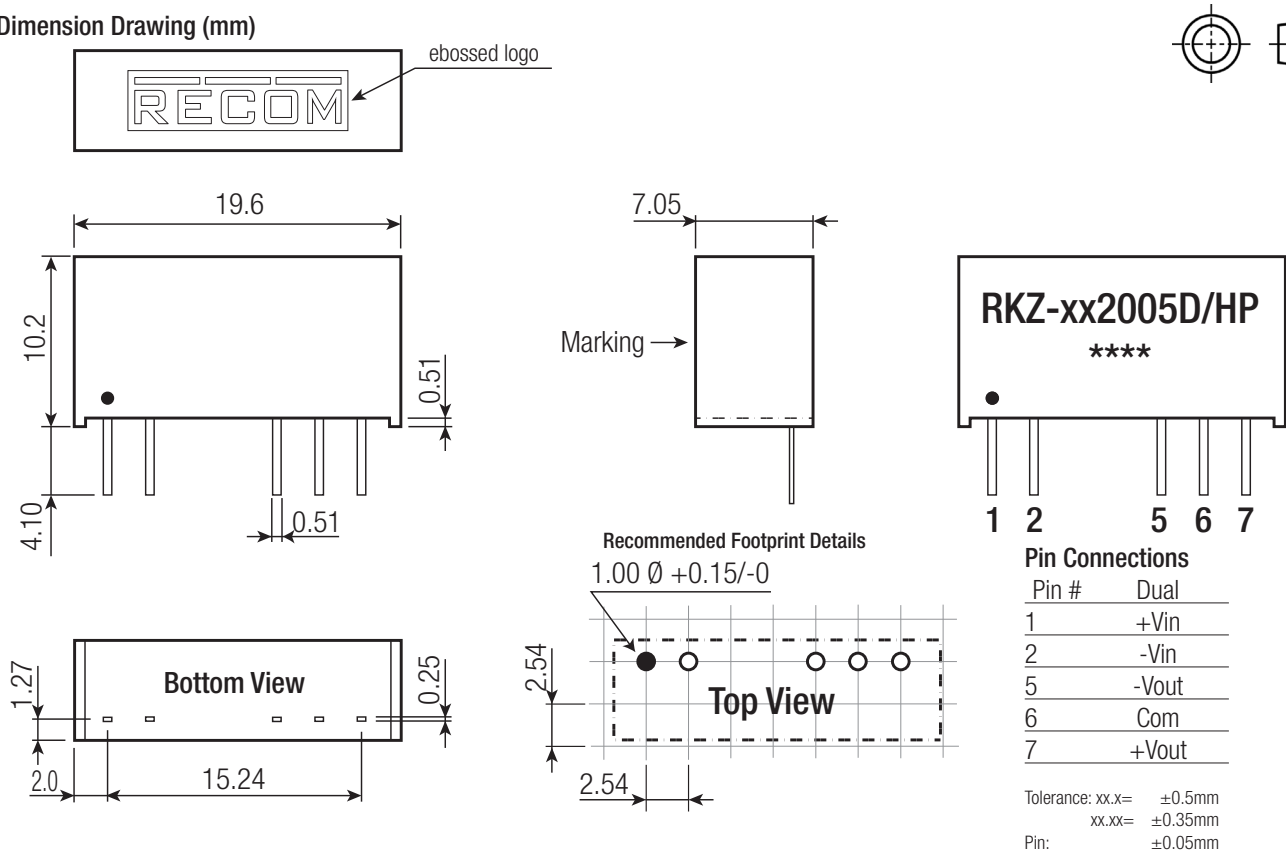
MODEL	C1	C2	L1
RKZ-052005D	10 μF	470pF, 4kVDC	4.7 μH
RKZ-122005D	4.7 μF		22 μH
RKZ-152005D	4.7 μF		22 μH
RKZ-242005D	2.2 μF		47 μH

Specifications (measured at $T_a = 25^\circ\text{C}$, nominal Input and full load after warm-up time unless otherwise noted)

DIMENSION and PHYSICAL CHARACTERISTICS

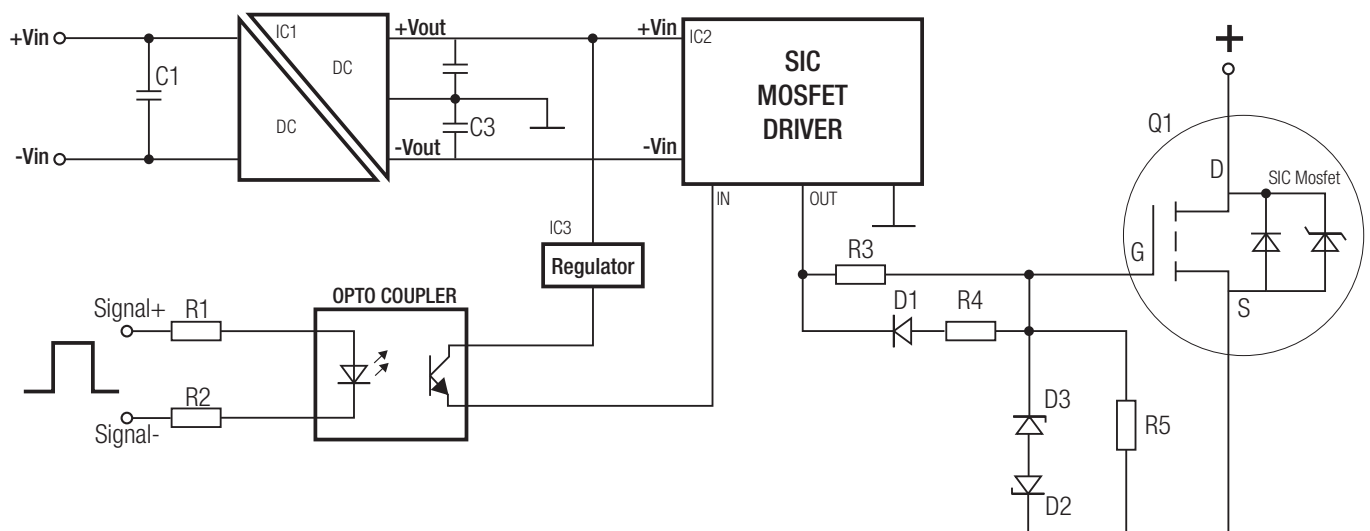
Parameter	Type	Value
Material	Case Potting	Plastic, (UL94V-0) Epoxy, (UL94V-0)
Package Dimension (LxWxH)		19.65 x 7.05 x 10.2mm
Package Weight		2.8g

Dimension Drawing (mm)



INSTALLATION AND APPLICATION

Typical Application Circuit



Specifications (measured at $T_a = 25^\circ\text{C}$, nominal input and full load after warm-up time unless otherwise noted)

PACKAGING INFORMATION		
Packaging Dimension (LxWxH)	Tube	520.0 x 16.5 x 9.3mm
Packaging Quantity		25pcs
Storage Temperature Range		-55°C to +125°C
Storage Humidity		5% to 95% RH

The product information and specifications may be subject to changes even without prior written notice. The product has been designed for various applications; its suitability lies in the responsibility of each customer. The products are not authorized for use in safety-critical applications without RECOM's explicit written consent. A safety-critical application is an application where a failure may reasonably be expected to endanger or cause loss of life, inflict bodily harm or damage property. The applicant shall indemnify and hold harmless RECOM, its affiliated companies and its representatives against any damage claims in connection with the unauthorized use of RECOM products in such safety-critical applications.