

WiFi Data Logging Sensor



5 easy steps to get started with your EasyLog WiFi sensor

1. Charge your sensor

The sensor will arrive partly charged, but for optimum performance you should charge it for 24 hours before use. The sensor will automatically start recharging when connected to a PC or USB charger using the USB cable provided.

Battery states

The symbols below show the range of battery states that your device may display.



Battery OK/Charged



Solid with bars

Battery Low



One bar flashes

Battery Charging



Bars cycling

2. Install or update the PC software

Before the sensor can be set up, you must install the software on your PC. To download, visit www.easylogcloud.com and select the **Software Download** link.

The sensor may already be displaying a reading, but it will not be configured or connected to your WiFi network until set up is complete. You should always

install the latest PC software to ensure you can connect with the latest devices, access the most up-to-date features and communicate effectively with the Cloud.



3. Update the sensor firmware

Run the **21CFR WiFi Sensor Software** and accept any firewall or security warnings. Select **Advanced Tools**, then select **Firmware Updater**. Follow the on-screen instructions to update the firmware in your sensor.

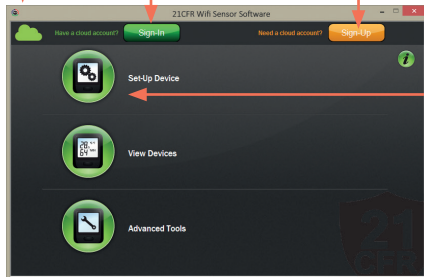
You should always install the latest firmware to ensure the device contains the latest features.

4. Set-up the sensor

Run the EasyLog 21CFR WiFi Sensor Software.

If you already have a cloud account sign-in here.

If you haven't yet signed-up for a EasyLog 21CFR Professional Cloud account, click here to get started.



Your **EasyLog 21CFR WiFi Sensor**, together with an **EasyLog 21CFR Professional Cloud** account, will provide controlled universal access to your data, with advanced system audit functions and restricted report generation through user management and privileges.

Once signed-in, select **Set-Up Device**, and follow the on-screen instructions to connect your sensor.

Once sensors have been set-up, they can be reconfigured remotely without reconnecting using the USB cable.

5. Positioning your sensor

When placing the sensor, use the signal icon to ensure the device remains within range of the network. Consider local heat sources and radio obstructions when positioning your device. A physical obstruction between the router/access point and sensor will affect the signal range. WiFi Extenders can be used to increase the range of your network.



Signal states

The symbols below show the range of signal states that your device can display.

Signal icon not displayed



Sensor is not set-up

Signal icon flashes



Sensor is trying to communicate

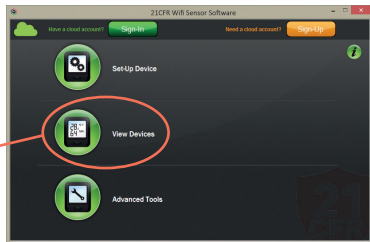
Signal icon solid



Sensor is successfully communicating

6. View devices in the Cloud

Once set-up, view all your sensors on the Cloud by clicking 'View Devices On The Cloud' and following the on-screen instructions.



What is Cloud based monitoring?

Enjoy controlled universal accessibility for your important data with the **EasyLog 21CFR Cloud**.

With the **EasyLog 21CFR Professional Cloud** you can:

- View data from multiple sensors across multiple sites
- Assign multiple users to access, view and export data
- Access data from any Internet enabled device
- Set up email alerts providing alarm and status reports
- Broadcast daily summary emails
- Control access to your data and restrict printing and exporting with user privileges and approved signatories





Technical support

Use the  button on the **EasyLog WiFi 21CFR Sensor Software** home screen for more information on how to set up your devices. You can also view **Help Guides** and other support resources at www.easylogcloud.com.

USA

For technical support contact support-us@flestrutheair.com
or call **+1 (814) 835- 7073**.

Rest of the World

For technical support contact 21cfr@flestrutheair.com
or call **+44 (0) 1425 651111**.

Important safety information

WARNING: Failure to follow these safety instructions could result in fire, electrical shock, other injury or damage.

Sensor's battery replacement

The rechargeable battery should only be replaced by an authorised supplier.

Repairing or modifying

Never attempt to repair or modify EasyLog WiFi 21CFR products. Dismantling EasyLog WiFi 21CFR products, including the removal of external screws, may cause damage that is not covered under the warranty.

Servicing should only be provided by an authorised supplier. If the EasyLog WiFi 21CFR product has been submerged in water, punctured, or seriously damaged do not use it and return it to an authorised supplier.

Charging

Only use a USB Power Adaptor or a USB port to charge EasyLog WiFi 21CFR products. Read all safety instructions for any third party products and accessories before use with this product. We are not responsible for the operation of any third party accessories or their compliance with safety and regulatory standards. We do not recommend charging the battery when the unit is at 40°C (104°F) or above. Some of our products employ safety features to prevent this.

Using connectors and ports

Never force a connector into a port; check for obstruction in the port, make sure that the connector matches the port and that you have positioned the connector correctly in relation to the port. If the connector and port do not join with reasonable ease they probably do not match and should not be used.

Disposal and recycling

You must dispose of EasyLog WiFi 21CFR products according to relevant laws and regulations. EasyLog WiFi 21CFR products contain electronic components and lithium polymer batteries and therefore they must be disposed of separately from household waste.



Issue 1 11-2016

www.easylogcloud.com