



FM Transmitter With phone holder & USB



PNG820

Contents

3. Functional Description
4. Specifications & Main Features
5. Panel Button Operations
6. Operating Instructions/ Charging Function
7. Installation Diagram
8. How to insert your mobile phone within the cradle
9. Notice/Cautions

Functional Description

1. Connect the audio source of the smart phone to the FM transmitter via the AUX cable.
2. Set the car FM channel the same with the PNG820 channel and receive the transmitting signals through FM radio.
3. The audio from smartphone will be transmitted to the car radio.
4. Through the USB charging interface, you can charge your mobile phones, MP3 players, GPS and other digital products in car fastest.

Specifications & Main Features

- Handsfree car kit for smartphones
- Over current protection and over voltage protection
- Power on/off switch
- Power supply: DC12~24V
- Adjustable goose neck, versatile holder.
- Frequency Range: 88.1MHz-107.9MHz
- LED display shows the frequency
- Hi-Fi Stereo music from Smartphone
- 360°Rotation adjustable, holder 58-80 mm width
- Flexible arm
- Restore the last frequency and volume when you restart the device
- Support Handsfree function, Voice calls out through the car audio system when using devices via Universal 3.5mm jack cable
- Handsfree function supports Samsung, HTC, Apple and other smart phones.
- Transmitter will turn off automatically when no audio signal is received for 60 seconds.
- DCSV 1A USB Car Charger, charge your device faster.
- USB output 5VDC/1A
- Play/Pause function is phone dependent.

080413V1

Panel Button Operations



- CH+/- key:** Short press to adjust frequency by 0.1MHz, long press to adjust the frequency rapidly.
- Play Key:** Under playing model, Play or pause by short press Short press Play key to answer the call when call coming; under the speaking mode, short press the Play key to end a call. (Car fm transmitter frequency and unit frequency should be same).
- Power Switch:** Power on/off

*Dependent on phone where Jack Cable fits

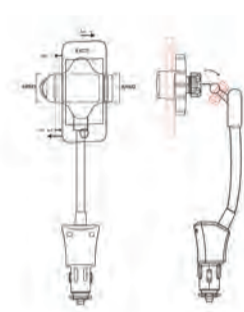
Operating Instructions/ Charging Function

1. Insert the unit into the car cigarette lighter; put your device into the cradle and lock-in.
2. Connect the 3.5mm jack cable to the cellphone, adjust the transmitting frequency of PNG820 to correspond channel between FM88.1~107.9MHz, set the car fm channel the same with PNG820 channel, and then you can listen to the phone's music through the car's FM radio.
3. Short press Play key to answer the call when call coming; under the speaking mode, short press the Play key to end a call. (Car FM transmitter frequency and unit frequency should be same).

Charging function

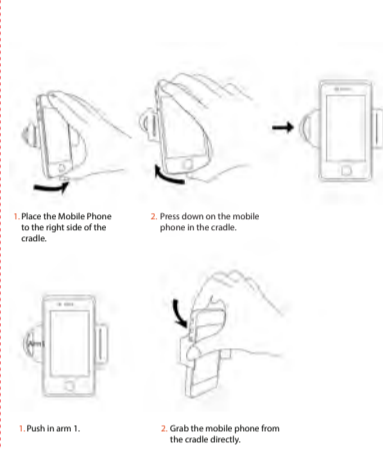
1. Connected the USB cable to the USB interface and the mobile, then it start charging automatically.
2. USB charging maximum output is 5V 1000mA.

Installation Diagram



- Step 1:** Screw the ring out of the cradle, then put the ball into the ring.
- Step 2:** Snap the cradle onto the ball of the cigarette power charger, and tighten the ring.

How to insert your mobile phone within the cradle



1. Place the Mobile Phone to the right side of the cradle.
2. Press down on the mobile phone in the cradle.
1. Push in arm 1.
2. Grab the mobile phone from the cradle directly.

Notice/Cautions

Notice

1. It is a normal phenomenon that the charger subject to a micro hot when charging. After the battery is full, its temperature will gradually return to normal room temperature;
2. In order to make the charger works in the best condition, please use this charger within the temperature of 0℃~40℃.
3. Please cut-off the external power supply when the charger stops charging.

Caution

1. Charge only for device with USB interface, if charge for the device with other types interface, it may cause explosion, cracking, leakage, personal injury or property damage.
2. Incorrect use of this charger may cause the risk of electric shock.
3. This charger is only suitable for internal use in the car, beware of rain and exposure.
4. Do not break down or assembled for the charger privately.
5. The charger must be used within 0℃~40℃.
6. Do not use or store the charger in heat or moisture place.
7. Do not backward the polarity of the rechargeable batteries.

EU
This product is CE certified according to the provision of the R&TTE Directive (99/5/EC).
Declares that this product is in compliance with the essential requirements and other relevant provisions of Directive 1999/5/EC.
Please note that this product uses radio frequency bands not harmonized within EU.
Within the EU this product is intended to be used in Austria, Belgium, Denmark, Finland, France, Germany, Greece, Ireland, Italy, Luxembourg, The Netherlands, Portugal, Spain, Sweden, and United Kingdom and within EFTA in Iceland, Norway and Switzerland.
Bluetooth is a trademark owned by the Bluetooth SIG, Inc.

Warranty
The condition of this warranty and our responsibilities under this warranty are as follows: Warranty is non-transferable, and is limited to the original purchaser only.
* You must be able to prove the date of original purchase of the unit with a dated receipt.
* The warranty is not applicable if the product has been subject to physical abuse, improper installation, modification or repair by unauthorized third party.
* The responsibility of the supplier's products shall be limited to the repair or replacement of the product at its sole discretion.
* Specifically exempt from any warranty are limited-life consumable components subject to normal wear and tear, such as batteries and other accessories.
* Supplier will not take any responsibility if the failure of the unit has resulted from accident, abuse, misuse, or any unauthorized repair, modification or disassemble.
* Modification and repair of the unit to this device must be done by an authorized and qualified service centre or returned to the manufacturer.
* This warranty gives you specific legal rights, and you may also have other rights which vary under local laws.



© 2008 Pama & Co. Ltd. England. All rights reserved. No part of this document may be reproduced without the prior written permission of Pama & Co. Ltd.