

Panel Mount Solid State Relay Single Phase DC Output



RoHS
Compliant



Description

The DC output panel mounted solid state relay. Control voltage is 4-32V DC, load voltage is 0-200V DC, output current is 20A. Opto-isolation between input and output, dielectric strength $\geq 2500\text{VACrms}$.

Application

Suitable for DC heating, DC power, DC valve, DC motor, Solar Energy and so on.

Features

- With IP20 Touch-Safe Cover
- Ratings: 20A @ 200V DC
- 4-32VDC Control Input
- Dielectric Strength $\geq 2500\text{V ACrms}$
- Opto-isolation
- Panel Mounted

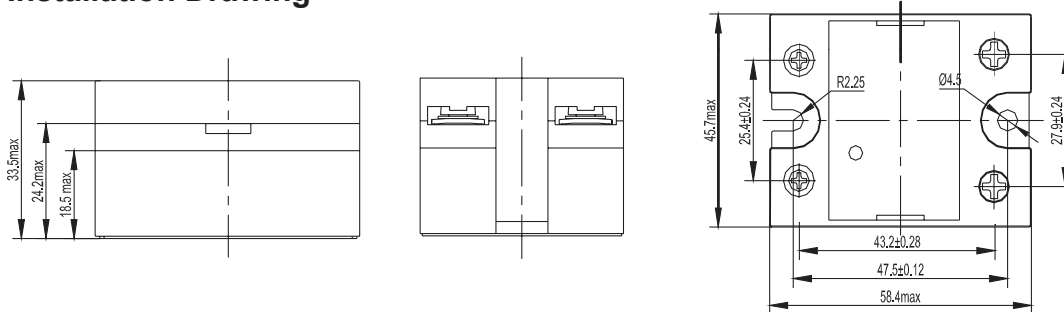
Technical Specification

| Input Circuit | |
|---|--|
| Control Voltage Range | 4-32V DC |
| Minimum Turn-on Voltage | 4V DC |
| Minimum Turn-off Voltage | 1V DC |
| Maximum Input Current | 28mA @ 32V DC |
| Output Circuit | |
| Load Voltage Range | 0-200V DC |
| Load Current Range | 0.001 - 20A |
| Maximum Surge Current(@10ms) | 60A |
| Maximum Turn-On Time | 100 μ s |
| Maximum Turn-Off Time | 100 μ s |
| Maximum Off-State Leakage Current [@ Rated Voltage] | 0.1mA |
| Max. on-state resistance | 30m Ω max.(@T _A = 25°C) |
| General Information | |
| Dielectric Strength, Input/Output/Base (50/60Hz) | $\geq 2500\text{Vrms}$ |
| Ambient Operating Temperature Range | -30°C ~ +80°C |
| Ambient Storage Temperature Range | -30°C ~ +100°C |
| Weight (Typical) | 90g |

Panel Mount Solid State Relay Single Phase DC Output

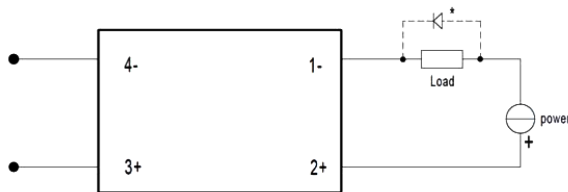


Installation Drawing



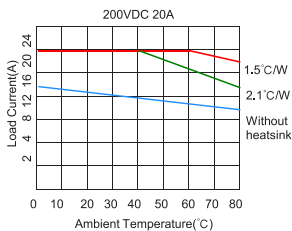
Dimensions : Millimetres

Wiring Diagram



*Inductive loads must be diode suppressed.

Thermal Curve



Part Number Table

| Description | Part Number |
|--|-------------|
| SSR, Panel Mount, 20A, 200V DC, 4-32V DC, Zero Crossing, IP20, DC Switch | MC002364 |

Important Notice : This data sheet and its contents (the "Information") belong to the members of the Premier Farnell group of companies (the "Group") or are licensed to it. No licence is granted for the use of it other than for information purposes in connection with the products to which it relates. No licence of any intellectual property rights is granted. The Information is subject to change without notice and replaces all data sheets previously supplied. The Information supplied is believed to be accurate but the Group assumes no responsibility for its accuracy or completeness, any error in or omission from it or for any use made of it. Users of this data sheet should check for themselves the Information and the suitability of the products for their purpose and not make any assumptions based on information included or omitted. Liability for loss or damage resulting from any reliance on the Information or use of it (including liability resulting from negligence or where the Group was aware of the possibility of such loss or damage arising) is excluded. This will not operate to limit or restrict the Group's liability for death or personal injury resulting from its negligence. Multicomp is the registered trademark of the Group. © Premier Farnell Limited 2016.

www.element14.com
www.farnell.com
www.newark.com

