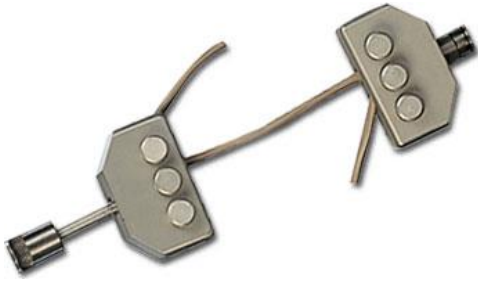




NIDEC-SHIMPO CORPORATION
INSTRUMENTS DIVISION

Cord and Twine Grip



NIDEC-SHIMPO's Cord and Twine Grip attachments contain a figure 8 wrap that assures a center break. These grips feature non-locking pins which permit quick installation and release.

Features

Throat and pin clearance is 0.375" (9.65 mm) wide with the throat width being 0.5" (12.7 mm). The FG-M10TWN500U is the upper grip only while the FG-M10TWN500UB includes both the upper grip and lower bottom grip attachments.

Specifications

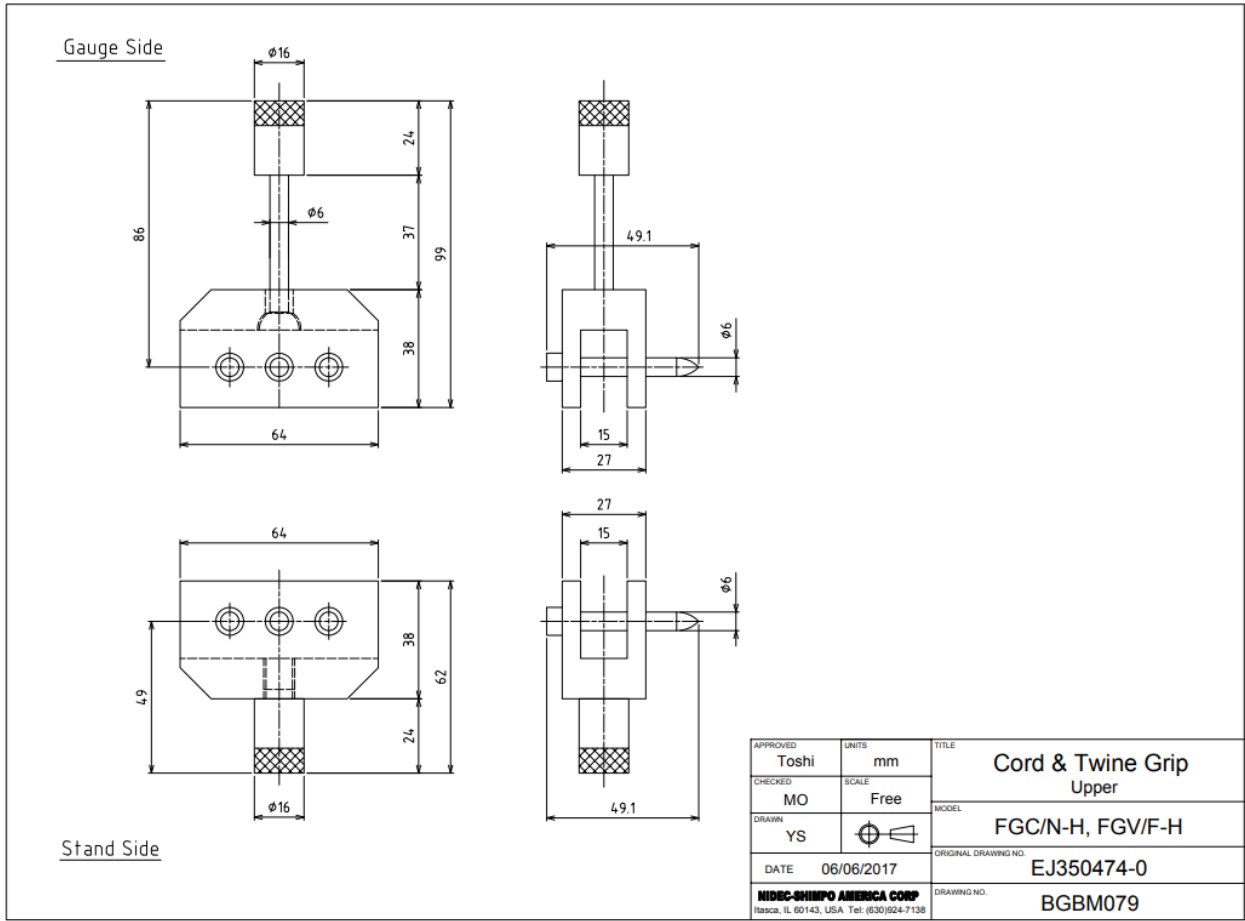
Model	FG-M10TWN500U	FG-M10TWN500UB
Throat Clearance	0.375" (9.65 mm) wide	0.375" (9.65 mm) wide
Throat Width	0.5" (12.7 mm)	0.5" (12.7 mm)
Capacity	500 lb (250 Kg)	500 lb (250 Kg)

*Grips ending in B = Bottom

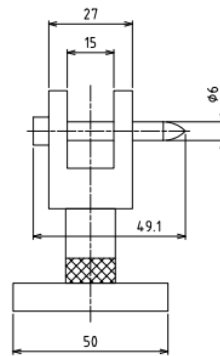
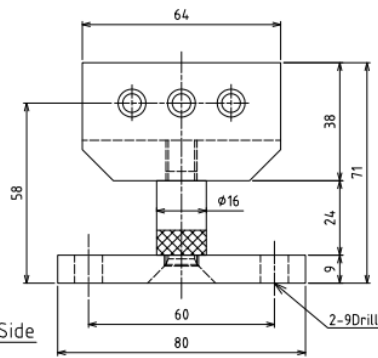
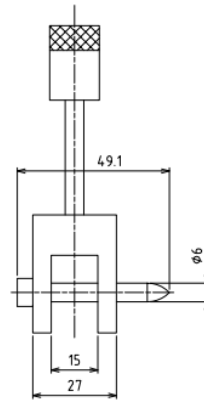
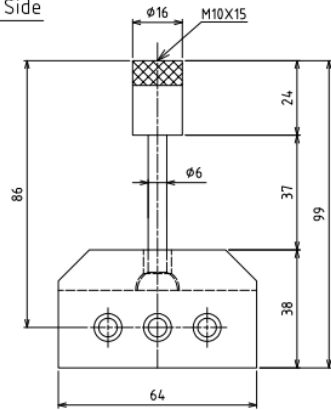
*Grips ending in U = Upper

*Grips ending in UB = are interchangeable

Dimensions



Gauge Side



Stand Side

APPROVED	Toshi	UNITS	mm	TITLE	Cord & Twine Grip Bottom Base
CHECKED	MO	SCALE	Free	MODEL	FGC/N-H, FGV/F-H
DRAWN	YS			ORIGINAL DRAWING NO.	EJ350475-0
DATE	06/06/2017			DRAWING NO.	BGBM080
NIDEC-SHIMPO AMERICA CORP Itasca, IL 60143, USA Tel: (830)924-7138					