



NIDEC-SHIMPO CORPORATION
INSTRUMENTS DIVISION

MPN	Description
FG-M10FAB80U	Fabric Grip, M10 Thread, 500 lb (250 kg) Capacity



NIDEC-SHIMPO's Fabric Grip attachments are eccentrically mounted and contain serrated roller grips that allow for self-tightening of specimens up to 3" (76.20 mm) wide and 0.25" (6.4 mm) thick.

Grips and attachments sold individually (not in pairs).

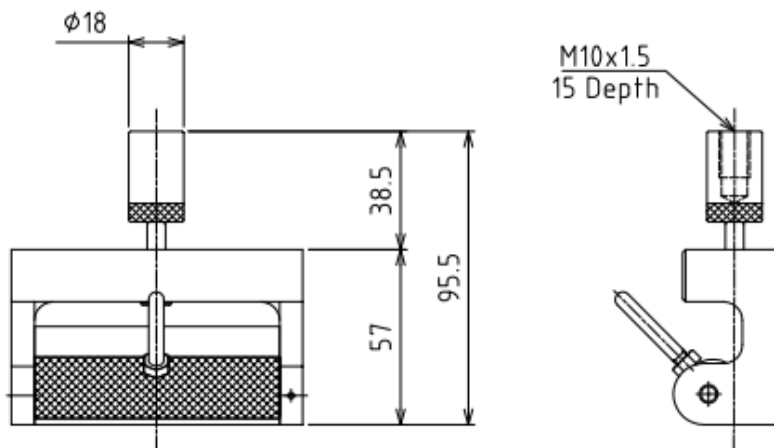
Features

NIDEC-SHIMPO's Fabric Grip attachments are eccentrically mounted and contain serrated roller grips that allow for self-tightening of specimens up to 3" (76.20 mm) wide and 0.25" (6.4 mm) thick.


Specifications

Self-tightening Jaw Width	3" (76.20 mm)
Range Thickness	0.25" (6.4 mm) thick
Capacity	500 lb (250 Kg)

Dimensions



Weight: Approx. 590g

DIMENSION	TOLERANCE	APPROVED	UNITS	PARTS NAME
TO 6	± 0.1	Toshi	mm	FABRIC GRIP (UPPER)
OVER 6 TO 30	± 0.2	CHECKED	MATERIAL	
OVER 30 TO 120	± 0.3	MO	Steel	
OVER 120 TO 400	± 0.5	DRAWN	QUANTITY	MODEL
OVER 400 TO 1000	± 0.8	Kei	1	FG-M10FAB80U
OVER 1000 TO 2000	± 1.2		SCALE	CODE
OVER 2000 TO 4000	± 2.0		1 : 1	EJ350433
HEAT TREATMENT / HARDNESS			DATE 04/28/2016	DRAWING NO.
SURFACE TREATMENT		NIDEC-SHIMPO AMERICA CORP Itasca, IL 60143, USA Tel: (630)924-7138		BGBM051