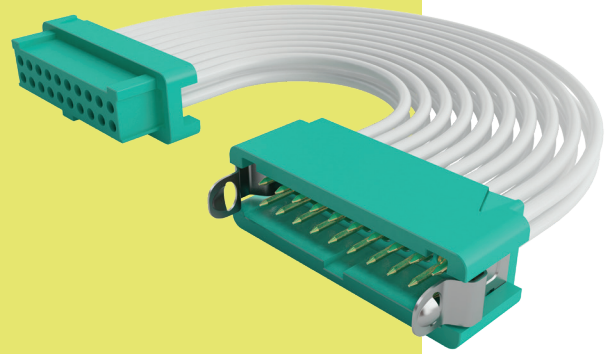


Gecko with Latches Connectors

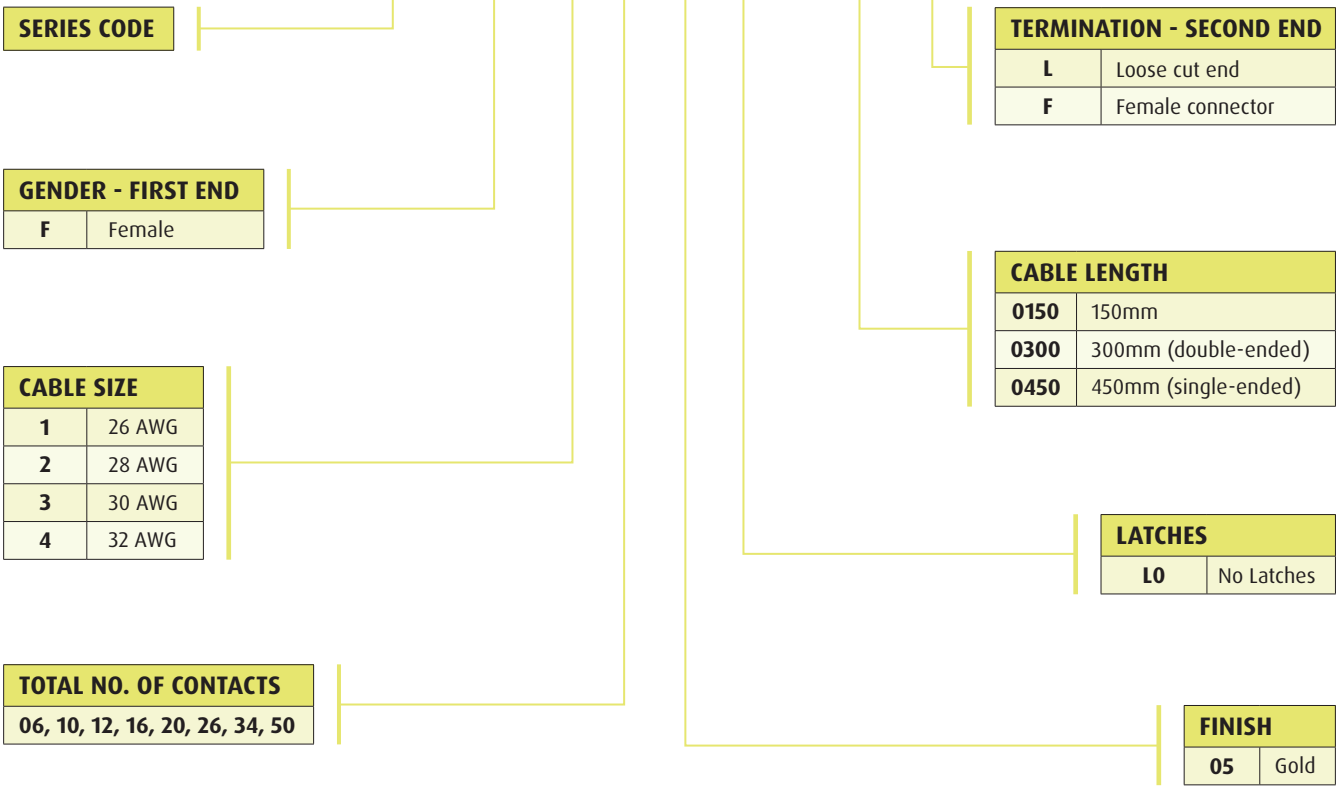
Female Cable Assemblies

- ❏ 4-finger Beryllium Copper contact.
- ❏ No. 1 position identified on moulding.
- ❏ 2A current capacity, resists high vibration and shock.
- ❏ Withstands extremes of temperature: -65°C to +150°C.
- ❏ Back potted for added strain relief.
- ❏ For non-standard cable lengths, please visit harwin.com/cable-assemblies and fill in your requirements.



PART NUMBERING SYSTEM

G125 - F C X XX 05 L0 - XXXX X



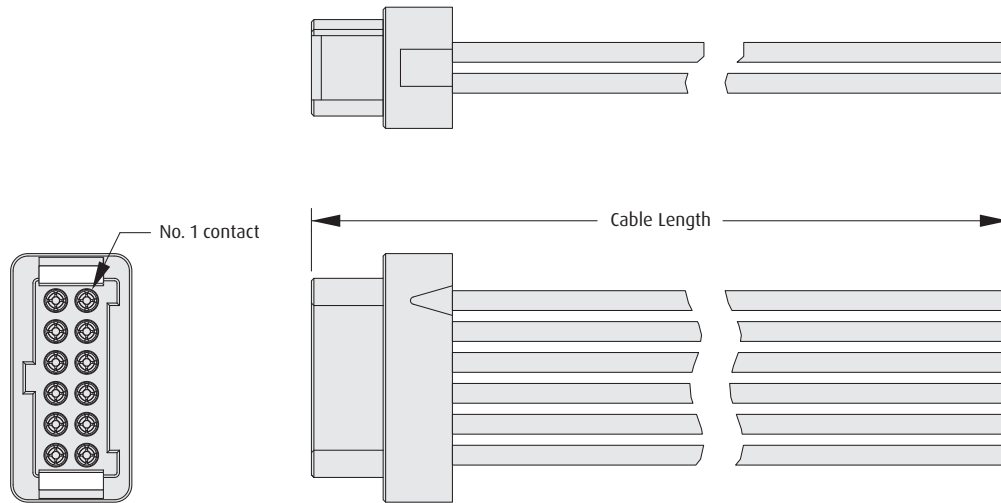
All dimensions in mm.

Patent Published

Female Cable Assemblies

- ❖ See previous page for cable length options.
- ❖ Cable assemblies are constructed with Contact 1 attached to Contact 1, Contact 2 to Contact 2, etc.

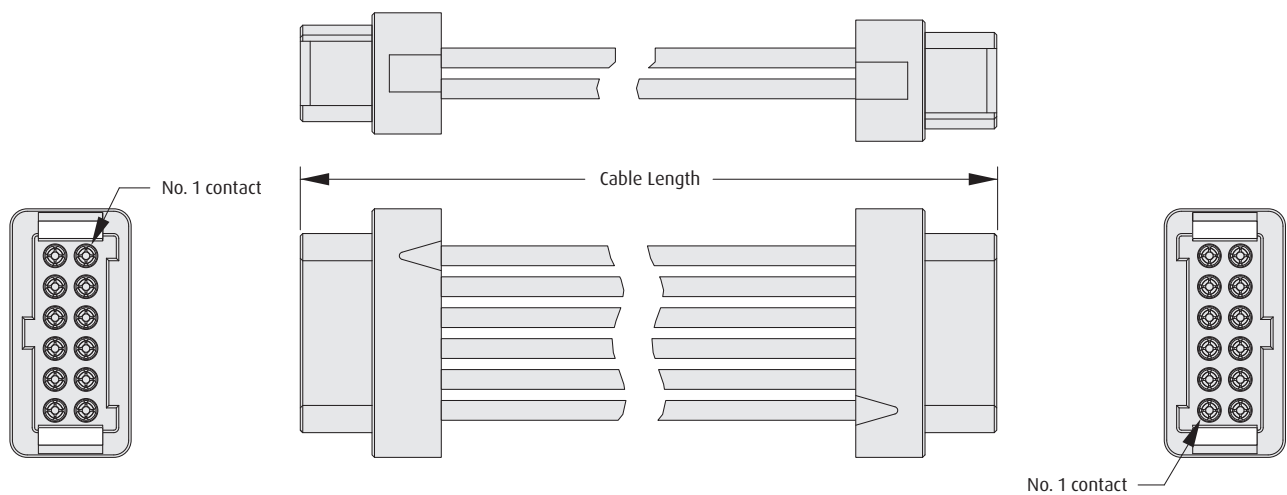
FEMALE SINGLE ENDED



ORDER CODE

G125-FCXXX05L0-XXXXL

FEMALE - FEMALE



ORDER CODE

G125-FCXXX05L0-XXXXF

All dimensions in mm.

Patent Published