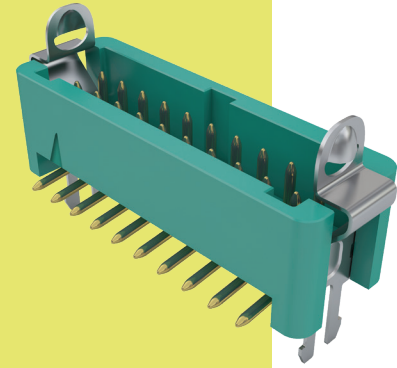


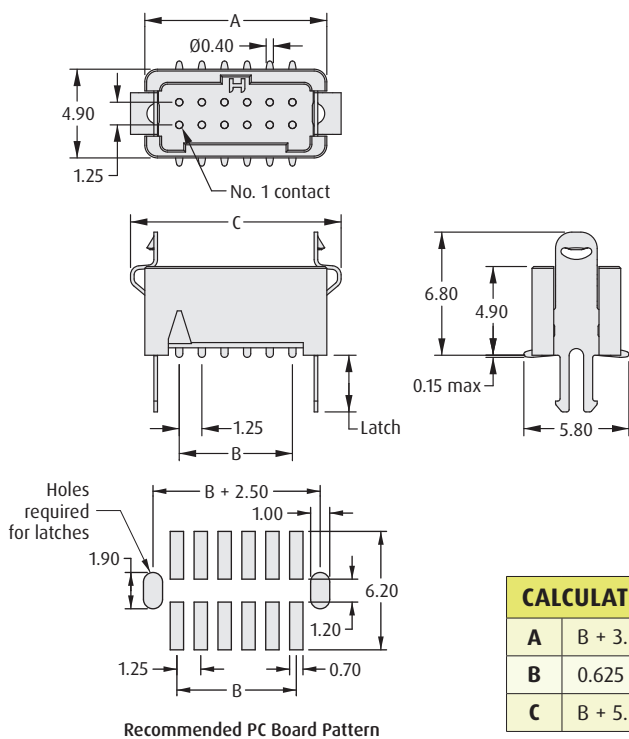
# Gecko with Latches Connectors

## Male Vertical Surface Mount

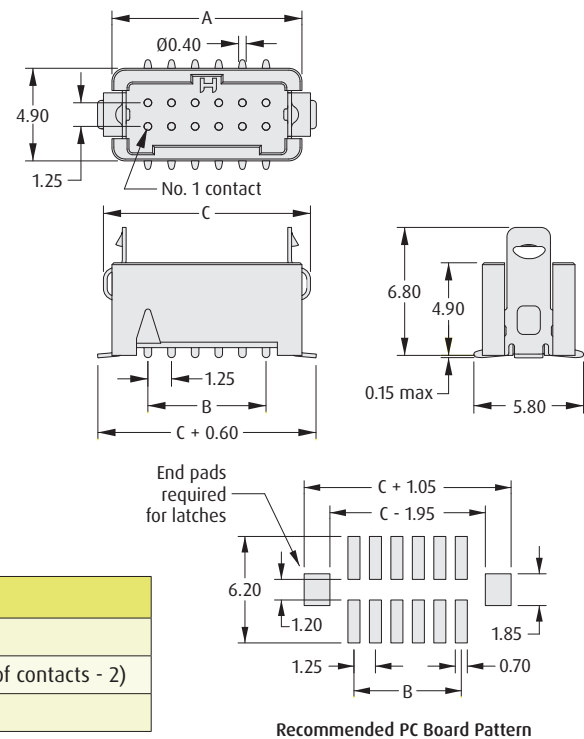
- Secure fixing to the PCB via hold-down tabs (SMT).
- Easy-to-release latches require no tooling.
- 2A current capacity, resists high vibration and shock.
- Withstands extremes of temperature: -65°C to +150°C.



### PC TAIL LATCH



### SURFACE MOUNT LATCH



| CALCULATION |                                     |
|-------------|-------------------------------------|
| A           | B + 3.8                             |
| B           | 0.625 x (Total No. of contacts - 2) |
| C           | B + 5.5                             |

### HOW TO ORDER

**G125 - M S1 XX 05 LX X**

|                              |                                |                  |   |
|------------------------------|--------------------------------|------------------|---|
| <b>SERIES CODE</b>           | G125 - M                       | <b>PACKAGING</b> | R   Tape & Reeled<br>P   Loose  |
| <b>TYPE</b>                  | S1   Surface Mount             | <b>LATCH</b>     | L0   No Latch<br>L1   Latch for 1.6mm PCB<br>L2   Latch for 2.4mm PCB<br>L3   Surface Mount Latch |
| <b>TOTAL NO. OF CONTACTS</b> | 06, 10, 12, 16, 20, 26, 34, 50 |                  |   |
| <b>FINISH</b>                | 05   Gold                      |                  |   |

All dimensions in mm.

Patent Published