

LTE Omni Antenna

698~960MHz,1710~2170MHz,2300~2690MHz

GTT: OE-LTE-04-016-CN



✓ LTE Specification

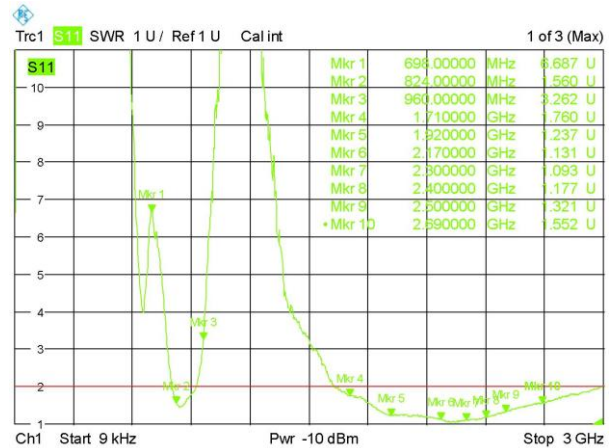
	698~960MHz / 1710~2170MHz / 2300~2690MHz
• Frequency Range:	Linear , Vertical
• Polarization:	360°
• HPBW / Horizontal:	90°
• HPBW / Vertical:	0.2 dBi Max. / 2.2 dBi Max. / 2.0 dBi Max.
• Peak Gain	15% Min. / 62% Min. / 80% Min.
• Efficiency:	4.0 Max.:1 / 2.0 Max.:1 / 2.0 Max.:1
• VSWR:	2W (cw)
• Power Handling:	50 Ohm
• Impedance:	N-Plug
• Connector:	

✓ Environmental & Mechanical Characteristics

- Temperature: -40°C to +85°C
- Humidity: 95% @55°C
- Antenna Housing Color: Cool Gray 2C
- Antenna Housing Material: PC
- Weight: 90g
- Dimensions: 55.0(L)x64(W)mm
- IP Rating: IP67
- IK Rating: IK09
- Color Band: Gray

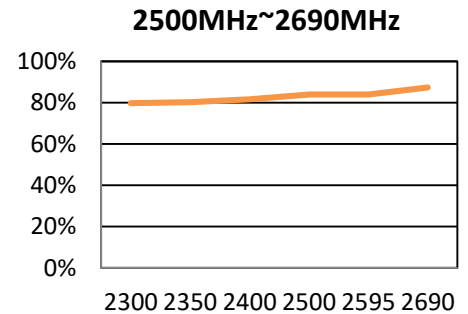
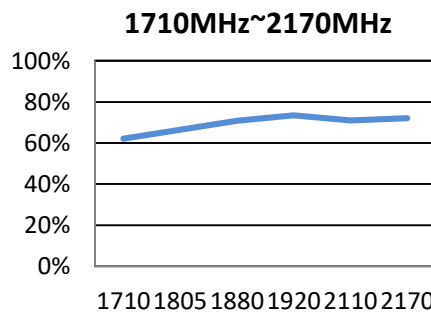
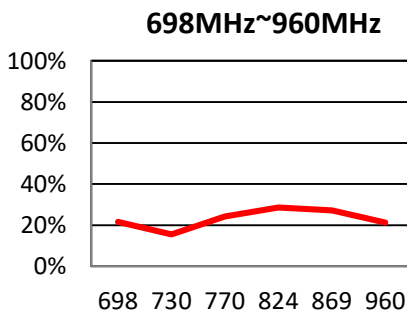
Passive Measurement: VSWR , Efficiency, Gain

Frequency(MHz)	698~960	1710~2170	2300~2690
VSWR	4.0 Max. : 1	2.0 Max. : 1	2.0 Max. : 1

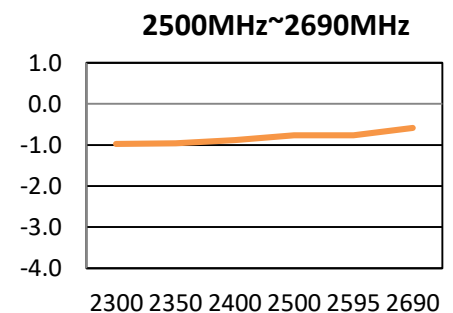
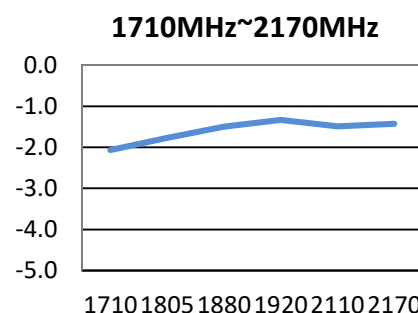
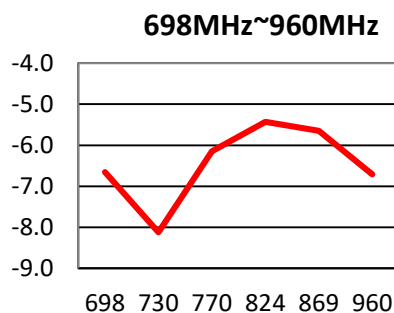


SUMMARY

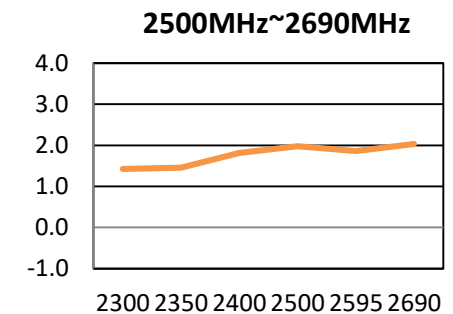
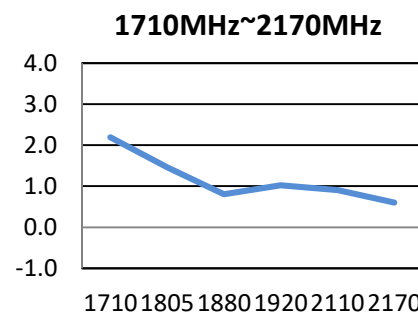
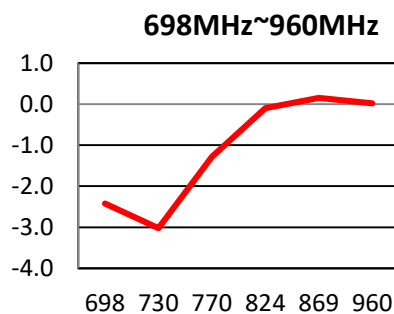
Efficiency



Average Gain



Peak Gain



Radiation Pattern

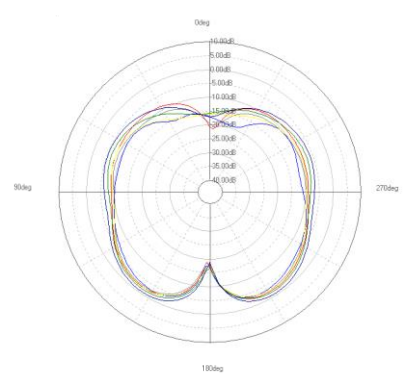
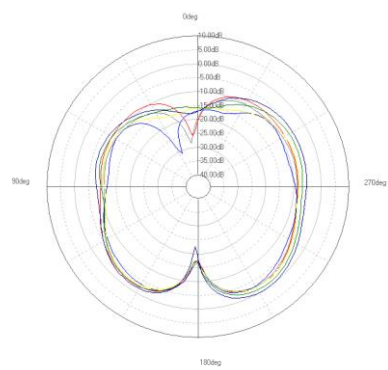
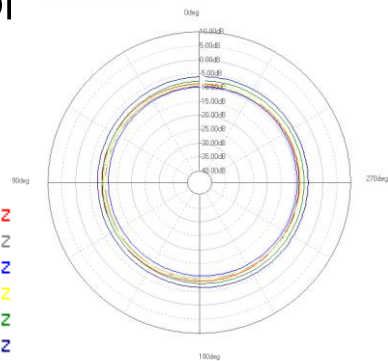
XY-plane

YZ-plane

ZX-plane

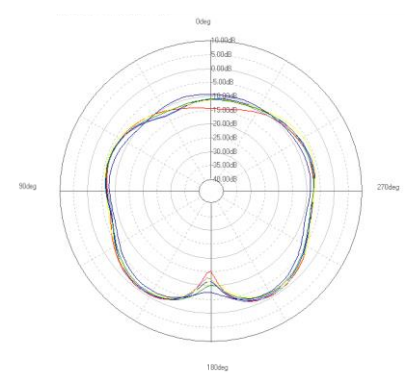
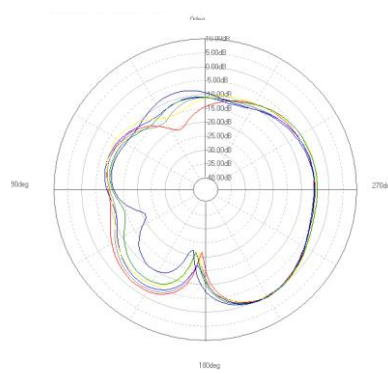
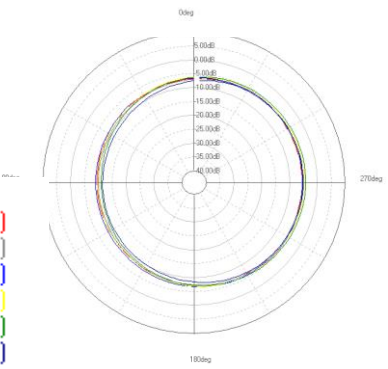
Legend

- 698.00(MHz)
- 710.00(MHz)
- 734.00(MHz)
- 751.00(MHz)
- 768.00(MHz)
- 798.00(MHz)



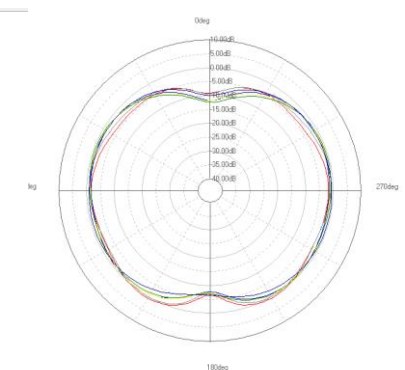
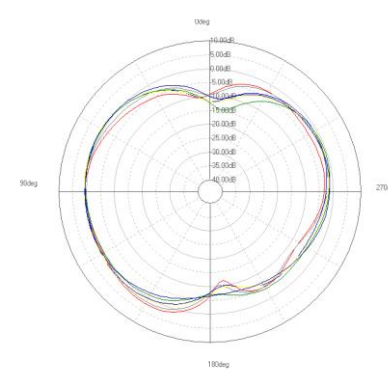
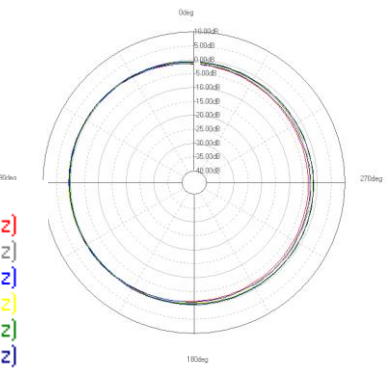
Legend

- 824.00(MHz)
- 849.00(MHz)
- 869.00(MHz)
- 894.00(MHz)
- 925.00(MHz)
- 960.00(MHz)



Legend

- 1710.00(MHz)
- 1805.00(MHz)
- 1880.00(MHz)
- 1920.00(MHz)
- 2110.00(MHz)
- 2170.00(MHz)



Legend

- 2300.00(MHz)
- 2350.00(MHz)
- 2400.00(MHz)
- 2500.00(MHz)
- 2595.00(MHz)
- 2690.00(MHz)

