

REV	DATE	DRAWN/CHKD	DESCRIPTION
A	14MAR94	JAD	PRN: C2-84
B	14DEC95	CHW	ADDED P/N C2-32-17
C	11OCT96	SWD	PRN: S-93-23
D	23FEB99	JDK/CHW	PRN: C2-139
E	30APR2003	VNI/MJS	PRN: P2003-0339
F	19JUN2003	RLR/MJS	PRN: P2003-0504
G	23JUL2013	MJS/TVA	PRN: P2013-1498

MILLIMETERS

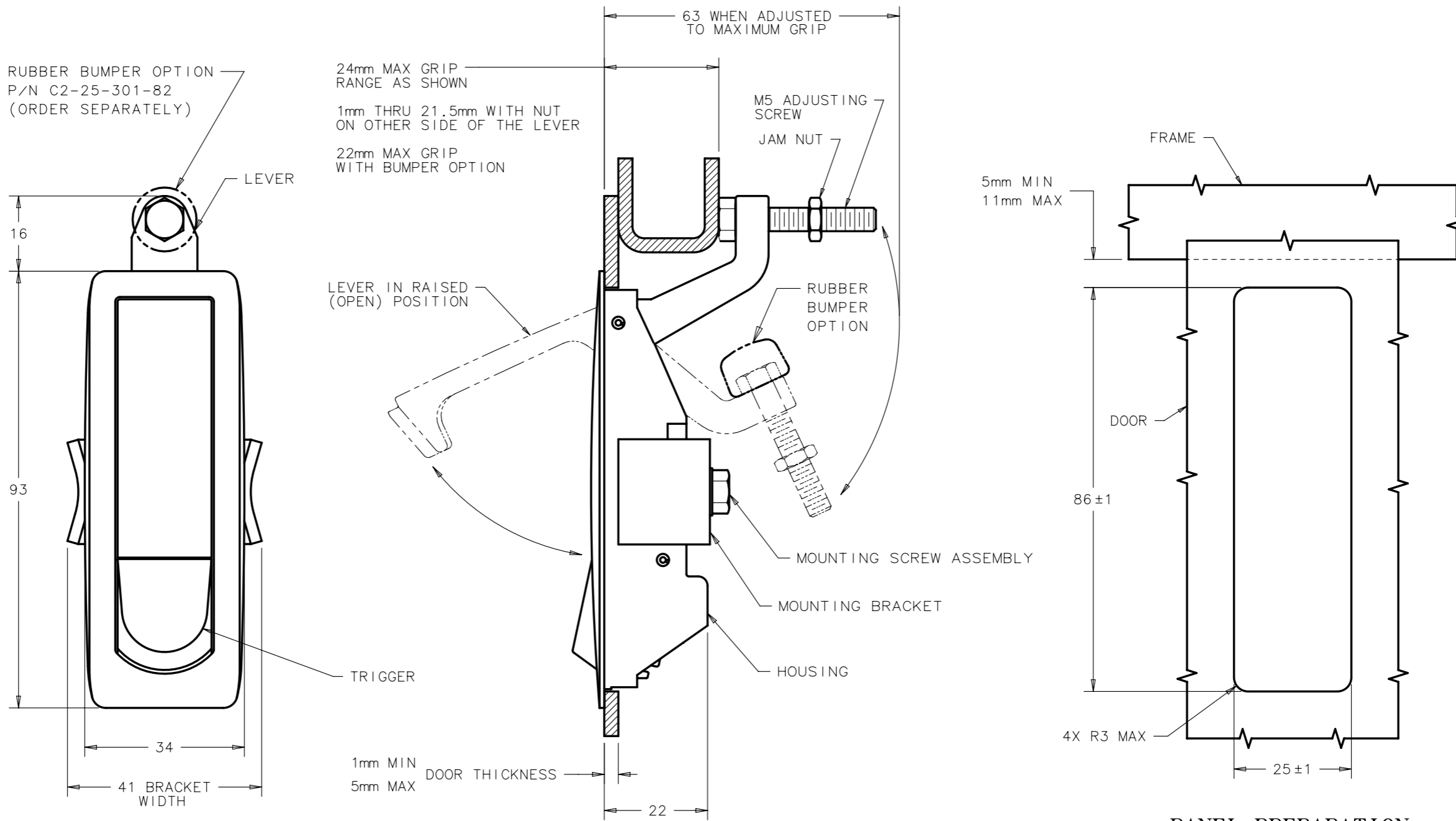
ALL DIMENSIONS WITHOUT TOLERANCES ARE FOR REFERENCE ONLY.

A3 PAPER SIZE
THIRD ANGLE PROJECTION

ASSEMBLY PART NUMBER TABLE		
BLACK POWDER COATED	TEXTURED CHROME FINISH	SILVER POLYESTER POWDER COATED
C2-32-15	C2-32-11	C2-32-17

NOTES:

- A. MATERIAL AND FINISH
 1. HOUSING, LEVER AND TRIGGER: DIE CAST ZINC, SEE ASSEMBLY PART NUMBER TABLE.
 2. U-SPRING: 302 STAINLESS STEEL, PASSIVATED.
 3. TORSION SPRING: 302 STAINLESS STEEL, NATURAL.
 4. SPIROL PIN: SAE 51420, NATURAL
 5. LOCKWASHER: SPRING STEEL, ZINC ALLOY PLATE BRIGHT PLUS SEALER.
 6. SCREWS AND HEX NUT: LOW CARBON STEEL, ZINC ALLOY PLATE BRIGHT PLUS SEALER.
 7. BRACKET: 1010 STEEL, ZINC ALLOY PLATE BRIGHT PLUS SEALER.
- B. MOUNTING SCREW ASSEMBLY CONSISTS OF: M5 SCREW WITH LOCKWASHER. USE LONGER SCREWS (NOT SUPPLIED) FOR THICKER DOORS.



PANEL PREPARATION