

# Compact Enclosed Switch



## Features

- High-precision and Miniature Enclosed Switch with Built-in Switches for Strong Durability of 10 Million Operations minimum and High -Repetition
- Requires less operating force (OF) than general limit switches
- UL, CUL, CCC & CE approved

## Characteristics

Degree of protection		IP67
Rating	IEC 60947-5-1	AC-12 250V AC / 10A
	UL508	A300 250V AC/15A, 30V DC/0.1A
Durability	Mechanical	10,000,000 operations min.
	Electrical	500,000 operations min.
Operating Speed		0.05mm/s ~ 0.5m/s
Operating Frequency	Mechanical	120 operations /min.
	Electrical	20 operations /min.
Rated Frequency		50/60Hz
Insulation Resistance		100MΩ min. (at 500V DC)
Contact Resistance		15mΩ max. (initial value)
Dielectric Strength	Between terminals of same polarity	1,000V AC; 50/60Hz for 1min
	Between current-carrying metal parts and ground	2,000V AC; 50/60Hz for 1min
	Between each terminal and non-current-carrying metal part	2,000V AC; 50/60Hz for 1min
Rated insulation voltage (Ui)		1000V AC
Pollution degree (Application environment)		3 (IEC947-5-1)
Short-circuit protective device		10A-fuse type gG (IEC 60269)
Rated open thermal current(Ith)		10A
Degree of protection against electric shock		Class II
Vibration Resistance	Malfunction	10~55 Hz 1.5mm double amplitude
Shock Resistance	Destruction	1,000m/s <sup>2</sup> max.
	Malfunction	300m/s <sup>2</sup> max.
Ambient operating temperature range		-10°C ~ +80°C with no icing
Ambient operating humidity range		35% ~ 95%RH

### Notes:

1. Above values of these characteristics are initial values.
2. Above values of these characteristics may be depending on different models.
3. Above durability is for an ambient temperature of 5 to 35° and ambient humidity of 40% to 70%.

## Operating Characteristics

Part Number	Operating Force	Release Force	Pre Travel	Over Travel	Movement Differential	Free Position	Operating Position
MC002398	11.8N	4.9N	1.5mm	2.4mm	0.2mm	-	32.4 ±0.8mm
MC002399	11.8N	4.9N	1.5mm	3mm	0.2mm	-	38.2 ±0.8mm

www.element14.com  
www.farnell.com  
www.newark.com



# Compact Enclosed Switch



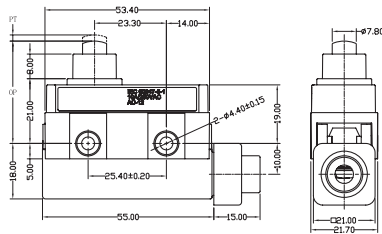
Part Number	Operating Force	Release Force	Pre Travel	Over Travel	Movement Differential	Free Position	Operating Position
MC002400	11.8N	4.9N	1.5mm	3mm	0.2mm	-	47.4 ±0.8mm
MC002401	11.8N	4.9N	1.5mm	3mm	0.2mm	-	47.4 ±0.8mm
MC002402	2.75N	0.59N	-	8.4mm	1.4mm	51.3mm	43 ±1.2mm
MC002403	3.92N	0.78N	-	6mm	1mm	49.2m	43 ±1.2mm
MC002404	3.92N	0.78N	-	6mm	1mm	59.2m	53 ±1.2mm
MC002405	2.75N	0.59N	-	8.4mm	1.4mm	61.2mm	53 ±1.2mm
MC002406	2.75N	0.59N	-	8.4mm	1.4mm	36.7mm	28.5 ±1.2mm
MC002407	3.92N	0.78N	-	6mm	1mm	34.7mm	28.5 ±1.2mm

## Plunger



**MC002398**

Weight: 91.1g

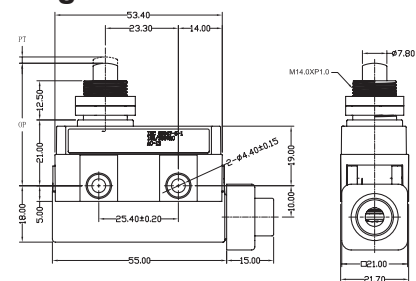


## Panel Mount Plunger



**MC002399**

Weight: 98.2g

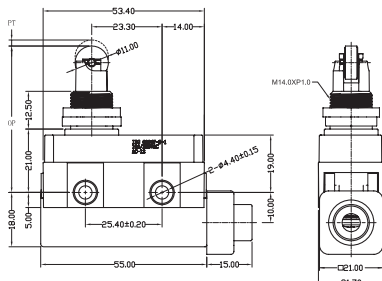


## Panel Mount Roller Plunger



**MC002400**

Weight: 104.4g

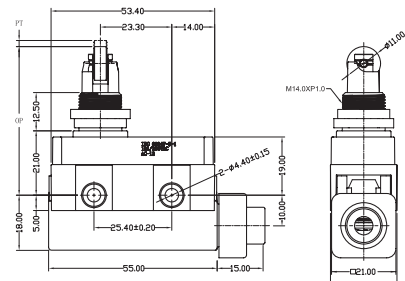


## Panel Mount Crossroller Plunger



**MC002401**

Weight: 104.5g

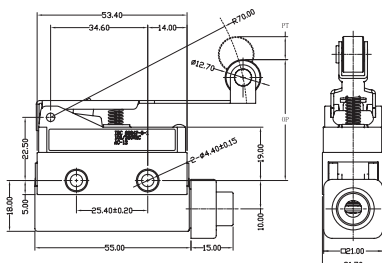


## Standard Hinge Roller Lever



**MC002402**

Weight: 110.2g

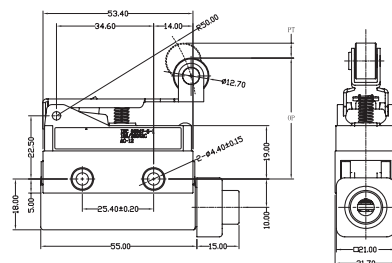


## Short Hinge Roller Lever



**MC002403**

Weight: 108g



Dimensions : Millimetres

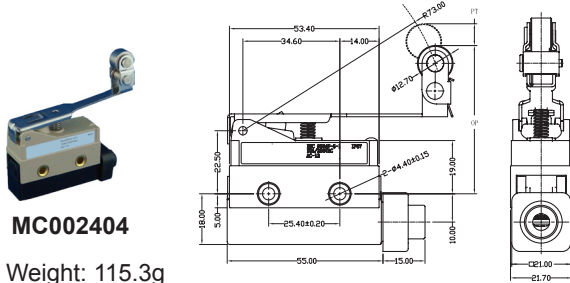
www.element14.com  
www.farnell.com  
www.newark.com



# Compact Enclosed Switch



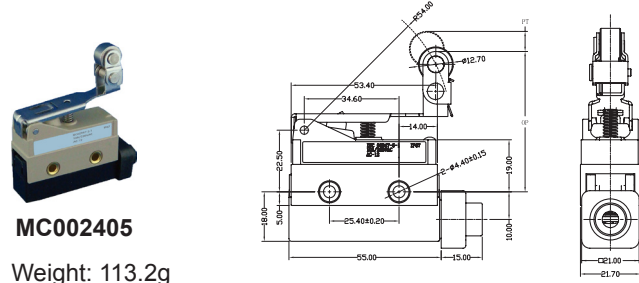
## One-way Action Hinge Roller Lever



MC002404

Weight: 115.3g

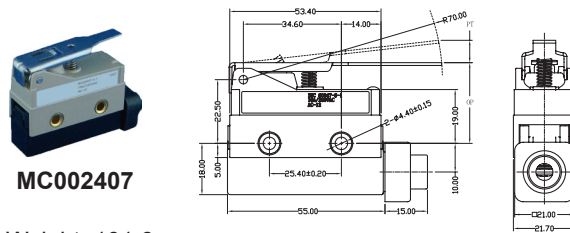
## One-way Action Short Hinge Roller Lever



MC002405

Weight: 113.2g

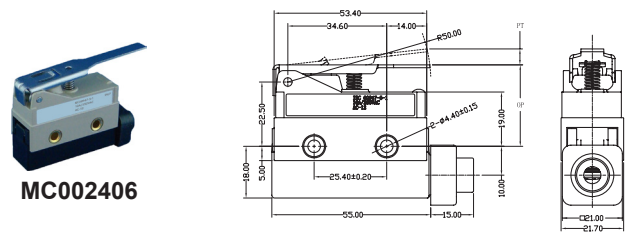
## Standard Hinge Lever



MC002407

Weight: 101.6g

## Short Hinge Lever



MC002406

Weight: 100.6g

Dimensions : Millimetres

## Part Number Table

Description	Part Number
Compact Enclosed Switch (IP67), Plunger, Screw Terminal	MC002398
Compact Enclosed Switch (IP67), Panel Mount Plunger, Screw Terminal	MC002399
Compact Enclosed Switch (IP67), Panel Mount Roller Plunger, Screw Terminal	MC002400
Compact Enclosed Switch (IP67), Panel Mount Crossroller Plunger, Screw Terminal	MC002401
Compact Enclosed Switch (IP67), Standard Hinge Roller Lever, Screw Terminal	MC002402
Compact Enclosed Switch (IP67), Short Hinge Roller Lever, Screw Terminal	MC002403
Compact Enclosed Switch (IP67), One-way Action Hinge Roller Lever, Screw Terminal	MC002404
Compact Enclosed Switch (IP67), One-way Action Short Hinge Roller Lever, Screw Terminal	MC002405
Compact Enclosed Switch (IP67), Standard Hinge Lever, Screw Terminal	MC002406
Compact Enclosed Switch (IP67), Short Hinge Lever, Screw Terminal	MC002407

**Important Notice :** This data sheet and its contents (the "Information") belong to the members of the Premier Farnell group of companies (the "Group") or are licensed to it. No licence is granted for the use of it other than for information purposes in connection with the products to which it relates. No licence of any intellectual property rights is granted. The Information is subject to change without notice and replaces all data sheets previously supplied. The Information supplied is believed to be accurate but the Group assumes no responsibility for its accuracy or completeness, any error in or omission from it or for any use made of it. Users of this data sheet should check for themselves the Information and the suitability of the products for their purpose and not make any assumptions based on information included or omitted. Liability for loss or damage resulting from any reliance on the Information or use of it (including liability resulting from negligence or where the Group was aware of the possibility of such loss or damage arising) is excluded. This will not operate to limit or restrict the Group's liability for death or personal injury resulting from its negligence. Multicomp is the registered trademark of the Group. © Premier Farnell Limited 2016.

www.element14.com  
www.farnell.com  
www.newark.com

