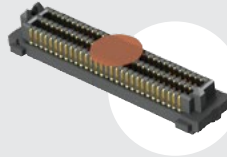


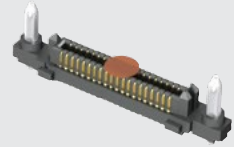


SEARAY™
8mm

SEAM8-30-S02.0-S-06-2-K



SEAM8-20-S02.0-S-04-2-GP-K



(0.80 mm) .0315"

SEAM8 SERIES

ULTRA-HIGH DENSITY OPEN-PIN-FIELD

SPECIFICATIONS

For complete specifications and recommended PCB layouts see www.samtec.com?SEAM8

Insulator Material:

Black LCP

Contact Material:

Copper Alloy

Plating:

Au or Sn over 50 μ" (1.27 μm) Ni

Operating Temp Range:

-55 °C to +125 °C

Current Rating:

1.3 A per pin (10 adjacent pins powered)

Working Voltage:

220 VAC

RoHS Compliant:

Yes

Lead-Free Solderable:

Yes

Board Mates:

SEAF8

Cable Mates:

ESCA

Standoffs:

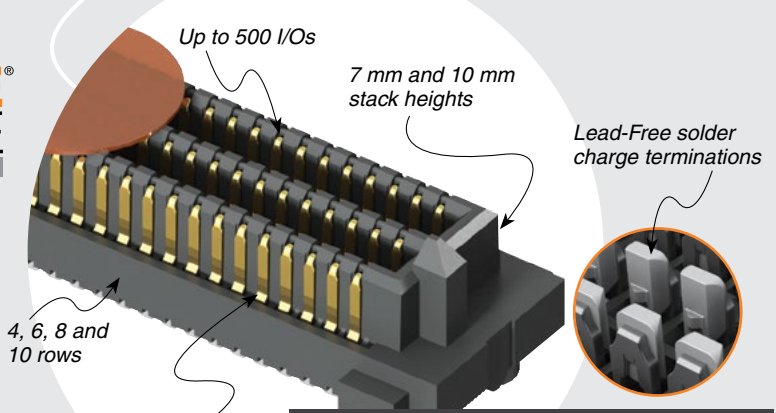
JSO



POWER/SIGNAL APPLICATION



Compatible with UMPT/UMPS for flexible two-piece power/signal solutions



Signal Integrity optimized Edge Rate® contact

HIGH-SPEED CHANNEL PERFORMANCE

SEAM8/SEAF8 @ 7 mm Mated Stack Height

Rating based on Samtec reference channel.

For full SI performance data visit Samtec.com or contact SIG@samtec.com

PAM 4

56
Gbps

RECOGNITIONS

For complete scope of recognitions see www.samtec.com/quality



ALSO AVAILABLE (MOQ Required)

- Other pin counts
- Contact Samtec.

MATED HEIGHT*

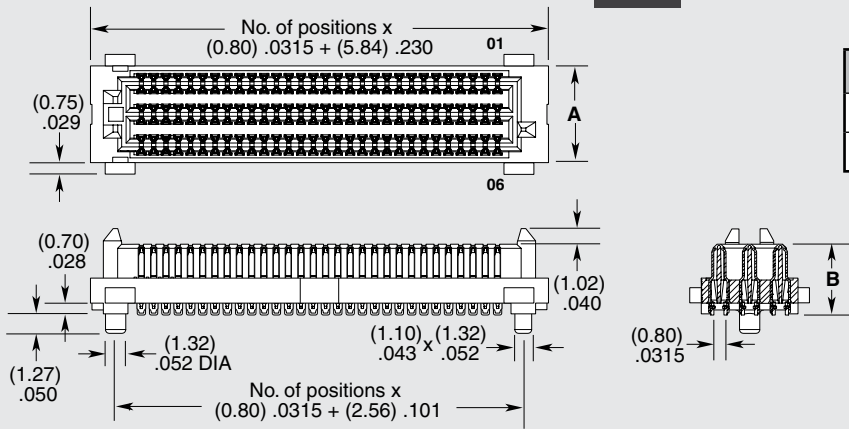
SEAF8 LEAD STYLE	SEAM8 LEAD STYLE	
	-S02.0	-S05.0
-05.0	(7.00) .276	(10.00) .394

*Processing conditions will affect mated height.

SEAM8	NO. PINS PER ROW	LEAD STYLE	PLATING OPTION	NO. OF ROWS	SOLDER TYPE	OPTION	K
	-10, -20, -30, -40, -50 (Standard sizes)	-S02.0 = 2 mm Body Height -S05.0 = 5 mm Body Height	-L = 10 μ" (0.25 μm) Gold on contact area, Matte Tin on solder tail -S = 30 μ" (0.76 μm) Gold on contact area, Matte Tin on solder tail	-04 = Four Rows -06 = Six Rows -08 = Eight Rows -10 = Ten Rows	-2 = Lead-Free Solder Charge	-GP = Guide Post (-S02.0 lead style only) (Mates with SEAF8-RA-GP)	-K = Polyimide film Pick & Place Pad

NO. OF ROWS	A
-04	(4.30) .169
-06	(6.30) .248
-08	(8.30) .327
-10	(10.30) .406

LEAD STYLE	B
-S02.0	(4.54) .179
-S05.0	(7.54) .297



Notes:
Patent Pending

Tape & Reel packaging is standard.

Some sizes, styles and options are non-standard, non-returnable.

Due to technical progress, all designs, specifications and components are subject to change without notice.

WWW.SAMTEC.COM

All parts within this catalog are built to Samtec's specifications. Customer specific requirements must be approved by Samtec and identified in a Samtec customer-specific drawing to apply.