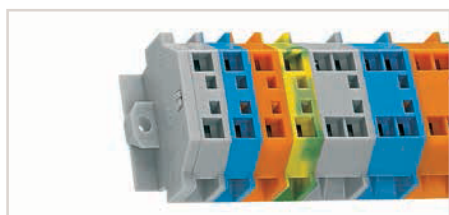
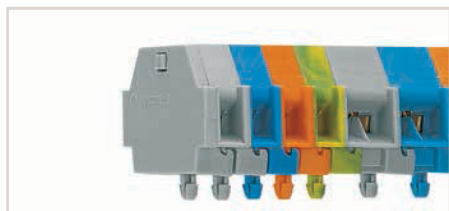


Modular Terminal Blocks with Mounting Flange or Snap-In Mounting Foot

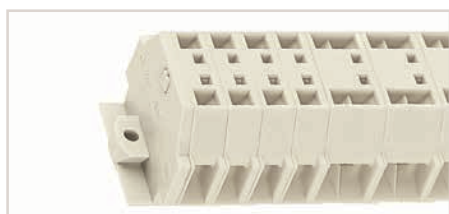
4 mm², 262 Series



Terminal strip, with mounting flanges, for screw or similar mounting types, 3.2 mm mounting hole diameter (with 209-123 Mounting Foot for DIN-35 rail)



Terminal strip with snap-in mounting feet, for 0.6 ... 1.2 mm plate thickness, 3.5 mm mounting hole diameter (also for 210-154 Aluminum Rail or with 209-120 Mounting Foot for DIN-35 rail)



Terminal strip, with mounting flanges, for screw or similar mounting types, 3.2 mm mounting hole diameter (with 209-123 Mounting Foot for DIN-35 rail)

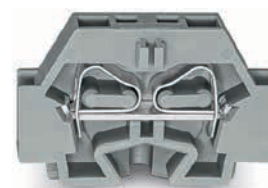


Terminal strip with snap-in mounting feet, for 0.6 ... 1.2 mm plate thickness, 3.5 mm mounting hole diameter (also for 210-154 Aluminum Rail or with 209-120 Mounting Foot for DIN-35 rail)

Terminal blocks with a blue insulated housing are suitable for Ex i applications.

Using crimped ferrules for corrosion protection, the rated cross-section is reduced by one size.

For conductor types and conductor preparation, see Section 14 "Electrical Equipment for Hazardous Environments."



2-conductor terminal block, with mounting flange, for screw or similar mounting types, 3.2 mm mounting hole diameter, with mounting foot (209-123) also for DIN-35 rail

Color	Item No.	Pack. Unit
gray	262-301	100 (50)
blue	262-304	100 (50)
orange	262-306	100 (50)
green-yellow	262-307	100 (50)

2-conductor terminal block, with snap-in mounting foot, for 0.6 ... 1.2 mm plate thickness, 3.5 mm mounting hole diameter, also for aluminum rail (210-154) or with mounting foot (209-120) for DIN-35 rail

Color	Item No.	Pack. Unit
gray	262-311	100 (50)
blue	262-314	100 (50)
orange	262-316	100 (50)
green-yellow	262-317	100 (50)

Space-saving, 2-conductor end terminal block, without protruding snap-in mounting foot, for terminal strips with snap-in mounting feet

Color	Item No.	Pack. Unit
gray	262-321	100 (50)
blue	262-324	100 (50)
orange	262-326	100 (50)
green-yellow	262-327	100 (50)

WAGO

Technical Data

Rated voltage (III / 3)	630 V
Rated surge voltage (III / 3)	8 kV
Rated current	24 A
Rated voltage EN (Ex e II)	
Approval	300 V, 20 A ; 300 V, 20 A
Connection Data	
Solid conductor	0.08 ... 4 mm / 28 ... 12 AWG
Fine-stranded conductor	0.08 ... 4 mm / 28 ... 12 AWG
Strip length	9 ... 10 mm / 0.35 ... 0.39 inch
Terminal block width	7 mm / 0.276 inch
Insulation material	Polyamide 66 (PA 66)

Accessories (Selection)

	Item No.	Page
Comb-style jumper bar, insulated, reduces maximum conductor size to 2.5 mm ² , I _N 16 A, gray	262-402	624
End plate, with mounting flange	gray 262-361	624
End plate, with snap-in mounting foot	gray 262-371	624
Test plug module, snaps together Module width 7 mm	gray 249-137	624
Test plug module, snaps together Module width 12 mm		

Dimensional drawing, see page 601

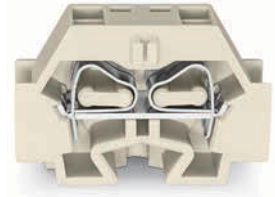
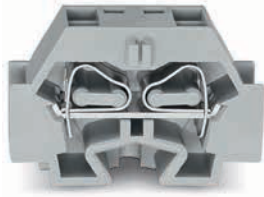
Accessories (jumpers, end plates, test plugs, etc.), see page 624

Tools, see Section 13

Marking accessories, see Section 13 and Volume 6

Information on hazardous locations, see Section 14

Approvals and corresponding ratings, visit www.wago.com



4-conductor terminal block, with mounting flange, for screw or similar mounting types, 3.2 mm mounting hole diameter, with mounting foot (209-123) also for DIN-35 rail

Color	Item No.	Pack. Unit
gray	262-331	100 (50)
blue	262-334	100 (50)
orange	262-336	100 (50)
green-yellow	262-337	100 (50)

2-conductor Ex e II terminal block, with mounting flange, for screw or similar mounting types, 3.2 mm mounting hole diameter, with mounting foot (209-123) also for DIN-35 rail

Color	Item No.	Pack. Unit
light gray	262-130	100 (50)

4-conductor Ex e II terminal block, with mounting flange, for screw or similar mounting types, 3.2 mm mounting hole diameter, with mounting foot (209-123) also for DIN-35 rail

Color	Item No.	Pack. Unit
light gray	262-230	100 (50)

4-conductor terminal block, with snap-in mounting foot, for 0.6 ... 1.2 mm plate thickness, 3.5 mm mounting hole diameter, also for aluminum rail (210-154) or with mounting foot (209-120) for DIN-35 rail

Color	Item No.	Pack. Unit
gray	262-341	100 (50)
blue	262-344	100 (50)
orange	262-346	100 (50)
green-yellow	262-347	100 (50)

2-conductor Ex e II terminal block, with snap-in mounting foot, for 0.6 ... 1.2 mm plate thickness, 3.5 mm mounting hole diameter, also for aluminum rail (210-154) or with mounting foot (209-120) for DIN-35 rail

Color	Item No.	Pack. Unit
light gray	262-180	100 (50)

4-conductor Ex e II terminal block, with snap-in mounting foot, for 0.6 ... 1.2 mm plate thickness, 3.5 mm mounting hole diameter, also for aluminum rail (210-154) or with mounting foot (209-120) for DIN-35 rail

Color	Item No.	Pack. Unit
light gray	262-280	100 (50)

Space-saving, 2-conductor end terminal block, without protruding snap-in mounting foot, for terminal strips with snap-in mounting feet

Color	Item No.	Pack. Unit
gray	262-351	100 (50)
blue	262-354	100 (50)
orange	262-356	100 (50)
green-yellow	262-357	100 (50)

Space-saving, 2-conductor Ex e II end terminal block, without protruding snap-in mounting foot, for terminal strips with snap-in mounting feet

Color	Item No.	Pack. Unit
light gray	262-181	100 (50)

Space-saving, 4-conductor Ex e II end terminal block, without protruding snap-in mounting foot, for terminal strips with snap-in mounting feet

Color	Item No.	Pack. Unit
light gray	262-281	100 (50)



630 V

8 kV

32 A

300 V, 20 A **UL**; 300 V, 20 A **C**

0.08 ... 4 mm / 28 ... 12 AWG

0.08 ... 4 mm / 28 ... 12 AWG

9 ... 10 mm / 0.35 ... 0.39 inch

12 mm / 0.472 inch

Polyamide 66 (PA 66)

23 A

550 V

300 V, 20 A **UL**; 300 V, 20 A **C**

0.5 ... 4 mm / 20 ... 12 AWG

0.5 ... 4 mm / 20 ... 12 AWG

9 ... 10 mm / 0.35 ... 0.39 inch

7 mm / 0.276 inch

Polyamide 66 (PA 66)

30 A

550 V

300 V, 20 A **UL**; 300 V, 20 A **C**

0.5 ... 4 mm / 20 ... 12 AWG

0.5 ... 4 mm / 20 ... 12 AWG

9 ... 10 mm / 0.35 ... 0.39 inch

12 mm / 0.472 inch

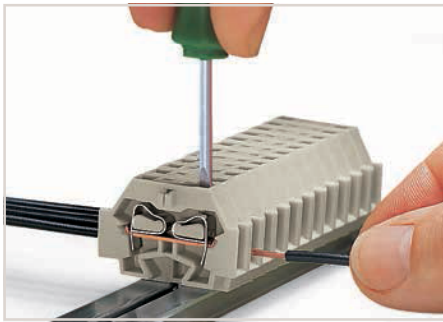
Polyamide 66 (PA 66)

	Item No.	Page
2-pole	262-402	624
gray	262-361	624
gray	262-371	624
gray	249-140	624

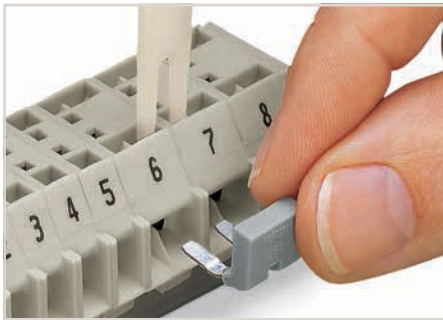
	Item No.	Page
2-pole	262-402	624
light gray	262-363	624
light gray	262-373	624

	Item No.	Page
2-pole	262-402	624
light gray	262-363	624
light gray	262-373	624

Terminal Strips with Mounting Flanges or Snap-in Mounting Feet 4 mm², 262 Series



CAGE CLAMP® connection
Inserting a conductor via screwdriver.



Commoning with comb-style jumper bar.

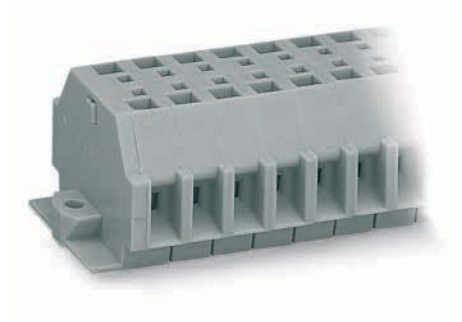
Terminal strips with a blue insulated housing are suitable for Ex i applications.

Item no. suffixes for gray terminal strips in:
blue .../000-006

Longer strips and/or mixed-color assemblies are available upon request.

Using crimped ferrules for corrosion protection, the rated cross-section is reduced by one size.

For conductor types and conductor preparation, see Section 14 "Electrical Equipment for Hazardous Environments."



2-conductor terminal strip, with mounting flanges, for screw or similar mounting types, 3.2 mm mounting hole diameter, gray

Pole No.	Item No.	Pack. Unit
2	262-102	100
3	262-103	100
4	262-104	100
5	262-105	100
6	262-106	100
7	262-107	100
8	262-108	100
9	262-109	50
10	262-110	25
11	262-111	25
12	262-112	25

2-conductor terminal strip, with snap-in mounting feet, for 0.6 ... 1.2 mm plate thickness, 3.5 mm mounting hole diameter, gray

Pole No.	Item No.	Pack. Unit
2	262-152	100
3	262-153	100
4	262-154	100
5	262-155	100
6	262-156	50
7	262-157	50
8	262-158	50
9	262-159	50
10	262-160	25
11	262-161	25
12	262-162	25



Technical Data

Rated voltage (III / 3)	630 V
Rated surge voltage (III / 3)	8 kV
Rated current	24 A
Rated voltage EN (Ex e II)	
Approval	300 V, 20 A ; 300 V, 20 A
Connection Data	
Solid conductor	0.08 ... 4 mm / 28 ... 12 AWG
Fine-stranded conductor	0.08 ... 4 mm / 28 ... 12 AWG
Strip length	9 ... 10 mm / 0.35 ... 0.39 inch
Module width	7 mm / 0.276 inch
Insulation material	Polyamide 66 (PA 66)

Accessories (Selection)

Comb-style jumper bar, insulated, reduces maximum conductor size to 2.5 mm ² , I _N 16 A, gray	
Test plug module, snaps together Module width 7 mm	
Test plug module, snaps together Module width 12 mm	

630 V
8 kV
24 A
300 V, 20 A ; 300 V, 20 A
0.08 ... 4 mm / 28 ... 12 AWG
0.08 ... 4 mm / 28 ... 12 AWG
9 ... 10 mm / 0.35 ... 0.39 inch
7 mm / 0.276 inch
Polyamide 66 (PA 66)

	Item No.	Page
2-pole	262-402	624
gray	249-137	624

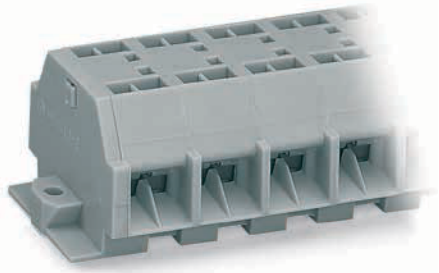
Dimensional drawing, see page 601

Tools, see Section 13

Marking accessories, see Section 13 and Volume 6

Information on hazardous locations, see Section 14

Approvals and corresponding ratings, visit www.wago.com



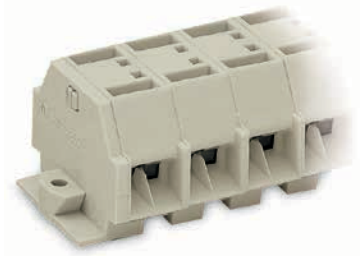
4-conductor terminal strip, with mounting flanges, for screw or similar mounting types, 3.2 mm mounting hole diameter, gray

Pole No.	Item No.	Pack. Unit
2	262-202	100
3	262-203	100
4	262-204	100
5	262-205	100
6	262-206	50
7	262-207	50
8	262-208	50
9	262-209	50
10	262-210	25
11	262-211	25
12	262-212	25



2-conductor Ex e II terminal strip, with mounting flanges, for screw or similar mounting types, 3.2 mm mounting hole diameter, light gray

Pole No.	Item No.	Pack. Unit
2	262-132	100
3	262-133	100
4	262-134	100
5	262-135	100
6	262-136	100
7	262-137	50
8	262-138	50
9	262-139	50
10	262-140	25
11	262-141	25
12	262-142	25



4-conductor Ex e II terminal strip, with mounting flanges, for screw or similar mounting types, 3.2 mm mounting hole diameter, light gray

Pole No.	Item No.	Pack. Unit
2	262-232	100
3	262-233	100
4	262-234	100
5	262-235	100
6	262-236	50
7	262-237	50
8	262-238	50
9	262-239	50
10	262-240	25
11	262-241	25
12	262-242	25

4-conductor terminal strip, with snap-in mounting feet, for 0.6 ... 1.2 mm plate thickness, 3.5 mm mounting hole diameter, gray

Pole No.	Item No.	Pack. Unit
2	262-252	100
3	262-253	100
4	262-254	100
5	262-255	100
6	262-256	50
7	262-257	50
8	262-258	50
9	262-259	50
10	262-260	25
11	262-261	25
12	262-262	25

2-conductor Ex e II terminal strip, with snap-in mounting feet, for 0.6 ... 1.2 mm plate thickness, 3.5 mm mounting hole diameter, light gray

Pole No.	Item No.	Pack. Unit
2	262-182	100
3	262-183	100
4	262-184	100
5	262-185	100
6	262-186	50
7	262-187	50
8	262-188	50
9	262-189	50
10	262-190	25
11	262-191	25
12	262-192	25

4-conductor Ex e II terminal strip, with snap-in mounting feet, for 0.6 ... 1.2 mm plate thickness, 3.5 mm mounting hole diameter, light gray

Pole No.	Item No.	Pack. Unit
2	262-282	100
3	262-283	100
4	262-284	100
5	262-285	100
6	262-286	50
7	262-287	50
8	262-288	50
9	262-289	50
10	262-290	25
11	262-291	25
12	262-292	25



630 V
8 kV
32 A
300 V, 20 A ; 300 V, 20 A
0.08 ... 4 mm / 28 ... 12 AWG
0.08 ... 4 mm / 28 ... 12 AWG
9 ... 10 mm / 0.35 ... 0.39 inch
12 mm / 0.472 inch
Polyamide 66 (PA 66)



23 A
550 V
300 V, 20 A ; 300 V, 20 A
0.08 ... 4 mm / 28 ... 12 AWG
0.08 ... 4 mm / 28 ... 12 AWG
9 ... 10 mm / 0.35 ... 0.39 inch
7 mm / 0.276 inch
Polyamide 66 (PA 66)



30 A
550 V
300 V, 20 A ; 300 V, 20 A
0.08 ... 4 mm / 28 ... 12 AWG
0.08 ... 4 mm / 28 ... 12 AWG
9 ... 10 mm / 0.35 ... 0.39 inch
12 mm / 0.472 inch
Polyamide 66 (PA 66)

	Item No.	Page
2-pole	262-402	624
gray	249-140	624

	Item No.	Page
2-pole	262-402	624

	Item No.	Page
2-pole	262-402	624

Accessories for 260 Series Modular Terminal Blocks and Terminal Strips

Commoning, Mounting, Marking and Testing



Comb-style jumper bar, insulated, reduces maximum conductor size to 1 mm ² , I _n 10 A, gray		
	Item No.	Pack. Unit
2-pole	260-402	25

Operating tool, insulated, for comb-style jumper bar		
	Item No.	Pack. Unit
2-pole	209-132	1




End plate, with mounting flange		
Color	Item No.	Pack. Unit
gray	260-361	300 (50)



End plate, with snap-in mounting foot		
Color	Item No.	Pack. Unit
gray	260-371	300 (50)



 Test plugs,
see page 604

Maximum test voltage: 250 V (only in test equipment acc. to relevant clearances and creepage distances)

Maximum test voltage (touch contact): 48 V (test pins are not touch-proof)

Maximum test current (touch contact): 0.5 A

Maximum test current: 6 A (if the test pins are securely connected in the clamping units)

Test voltage	48 V
Test current	0.5 A

Test plug module, snaps together Module width 5 mm			
Suitable for:	Color	Item No.	Pack. Unit
2-conductor terminal blocks	gray	249-135	100 (25)

Maximum test voltage: 250 V (only in test equipment acc. to relevant clearances and creepage distances)

Test plug module, with locking latches, snaps together Module width 5 mm			
Suitable for:	Color	Item No.	Pack. Unit
2-conductor terminal blocks	gray	260-404	100 (25)

Maximum test voltage: 500 V (only in test equipment acc. to relevant clearances and creepage distances)

Test plug module, snaps together Module width 8 mm			
Suitable for:	Color	Item No.	Pack. Unit
4-conductor terminal blocks	gray	249-138	100 (25)

Maximum test voltage: 500 V (only in test equipment acc. to relevant clearances and creepage distances)

Test plug module, with locking latches, snaps together Module width 8 mm			
Suitable for:	Color	Item No.	Pack. Unit
4-conductor terminal blocks	gray	260-405	100 (25)

8



Accessories for 261 Series Modular Terminal Blocks and Terminal Strips

Commoning, Mounting, Marking and Testing



Comb-style jumper bar, insulated, reduces maximum conductor size to 1.5 mm ² , I _n 16 A, gray			
	Item No.	Pack.	Unit
2-pole	261-402	25	



Operating tool, insulated, for comb-style jumper bar			
	Item No.	Pack.	Unit
2-pole	209-132	1	



End plate, with mounting flange			
Color	Item No.	Pack.	Unit
gray	261-361	300	(50)




End plate, with snap-in mounting foot			
Color	Item No.	Pack.	Unit
gray	261-371	300	(50)



End plate, with mounting flange			
Suitable for:	Color	Item No.	Pack. Unit
261-411	gray	261-410	300 (50)



 Test plugs,
see page 608

Maximum test voltage: 400 V (only in test equipment acc. to relevant clearances and creepage distances)

Maximum test voltage (touch contact): 48 V (test pins are not touch-proof)

Maximum test current (touch contact): 0.5 A

Maximum test current: 6 A (if the test pins are securely connected in the clamping units)

Test voltage	48 V
Test current	0.5 A

Test plug module, snaps together Module width 6 mm			
Suitable for:	Color	Item No.	Pack. Unit
2-conductor terminal blocks	gray	249-136	100 (25)

Maximum test voltage: 400 V (only in test equipment acc. to relevant clearances and creepage distances)



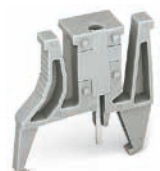
Test plug module, with locking latches, snaps together Module width 6 mm			
Suitable for:	Color	Item No.	Pack. Unit
2-conductor terminal blocks	gray	261-404	100 (25)

Maximum test voltage: 800 V (only in test equipment acc. to relevant clearances and creepage distances)



Test plug module, snaps together Module width 10 mm			
Suitable for:	Color	Item No.	Pack. Unit
4-conductor terminal blocks	gray	249-139	100 (25)

Maximum test voltage: 800 V (only in test equipment acc. to relevant clearances and creepage distances)



Test plug module, with locking latches, snaps together Module width 10 mm			
Suitable for:	Color	Item No.	Pack. Unit
4-conductor terminal blocks	gray	261-405	100 (25)

Accessories for 262 Series Modular Terminal Blocks and Terminal Strips

Commoning, Mounting, Marking and Testing



Comb-style jumper bar, insulated, reduces maximum conductor size to 2.5 mm ² , I _n 16 A, gray			
		Item No.	Pack. Unit
2-pole		262-402	25



Operating tool, insulated, for comb-style jumper bar			
		Item No.	Pack. Unit
2-pole		209-132	1



End plate, with mounting flange			
Color		Item No.	Pack. Unit
gray		262-361	50



End plate, with snap-in mounting foot			
Color		Item No.	Pack. Unit
gray		262-371	800 (50)



End plate, with mounting flange			
Suitable for:	Color	Item No.	Pack. Unit
262-130	gray	262-363	50



End plate, with snap-in mounting foot			
Suitable for:	Color	Item No.	Pack. Unit
262-230	gray	262-373	50



Test plugs, see page 604

Maximum test voltage: 500 V (only in test equipment acc. to relevant clearances and creepage distances)
 Maximum test voltage (touch contact): 48 V (test pins are not touch-proof)
 Maximum test current (touch contact): 0.5 A
 Maximum test current: 6 A (if the test pins are securely connected in the clamping units)

Test voltage	48 V
Test current	0.5 A

Test plug module, snaps together Module width 7 mm			
Suitable for:	Color	Item No.	Pack. Unit
2-conductor terminal blocks	gray	249-137	100 (25)

Maximum test voltage: 800 V (only in test equipment acc. to relevant clearances and creepage distances)

Test plug module, snaps together Module width 12 mm			
Suitable for:	Color	Item No.	Pack. Unit
4-conductor terminal blocks	gray	249-140	100 (25)

