

(3.96 mm) .156"

FHP SERIES

# POWER SOCKETS

## SPECIFICATIONS

For complete specifications and recommended PCB layouts see [www.samtec.com?FHP](http://www.samtec.com?FHP)

**Insulator Material:** Black LCP

**Contact Material:** BeCu

**Plating:** Sn over 50 μ" (1.27 μm) Ni

**Operating Temp Range:** -55 °C to +105 °C

**Voltage Rating:** 600 VAC/845 VDC

**Insertion Depth:** (3.57 mm) .140" to (8.76 mm) .345" or pass-through from top

**Wiping Distance:** (0.38 mm) .015"

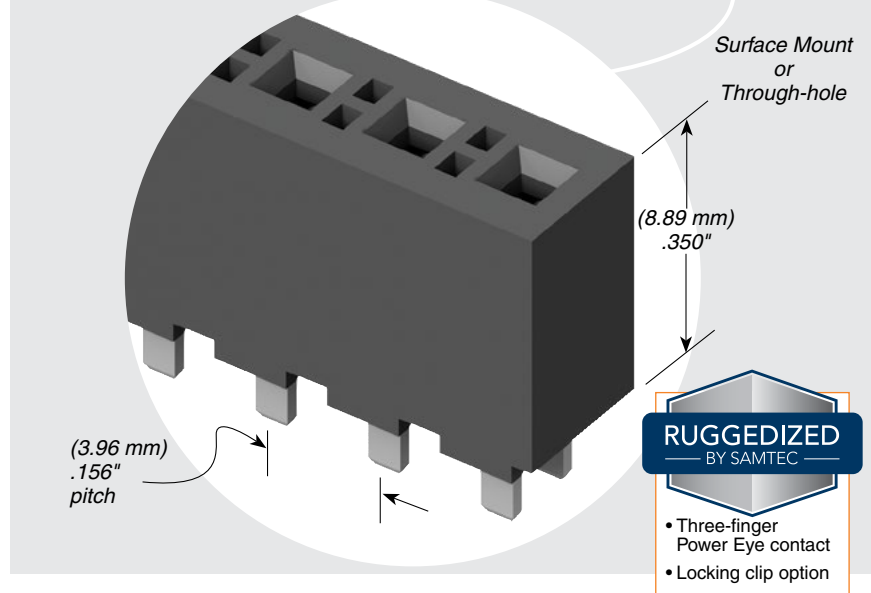
**Standard Creepage:** (1.74 mm) .069" (without -LC) (0.89 mm) .035" (with -LC)

**Standard Clearance:** (1.39 mm) .055" (without -LC) (0.59 mm) .023" (with -LC)

**RoHS Compliant:** Yes

**Mates with:** FWJ, HFWJ, JW

FHP/HFWJ	
PINS	CURRENT RATING (PER CONTACT)
1	13.1 A
2	11.2 A
3	10.3 A
4	9.2 A
24	6.7 A



**RUGGEDIZED**  
BY SAMTEC

- Three-finger Power Eye contact
- Locking clip option

## PROCESSING

**Lead-Free Solderable:** Yes

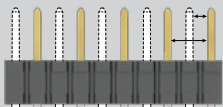
**SMT Lead Coplanarity:** (0.10 mm) .004" max

## RECOGNITIONS

For complete scope of recognitions see [www.samtec.com/quality](http://www.samtec.com/quality)



## CREEPAGE AND CLEARANCE



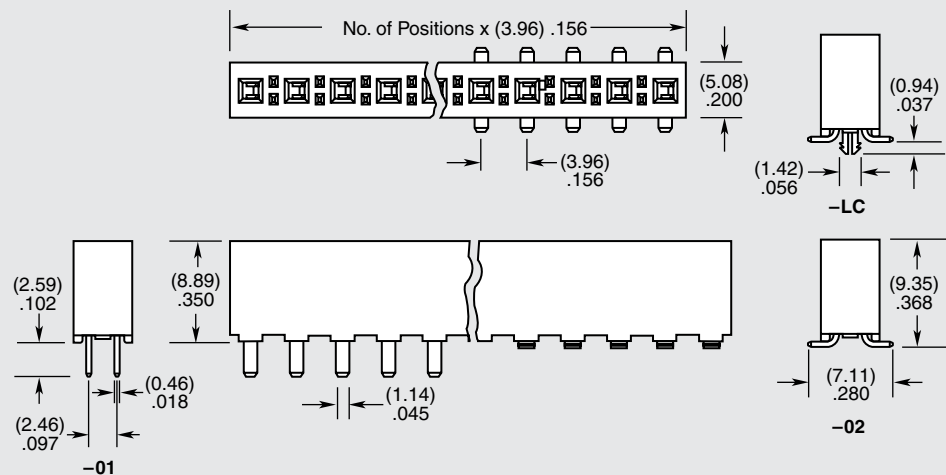
Selectively loading contacts achieves customer specific creepage and clearance requirements.  
Contact [asp@samtec.com](mailto:asp@samtec.com)

## ALSO AVAILABLE (MOQ Required)

- Alignment pins
- Contact Samtec.

**Note:** Some lengths, styles and options are non-standard, non-returnable.

<b>FHP</b>	<b>NO. OF PINS PER ROW</b>	<b>LEAD STYLE</b>	<b>PLATING OPTION</b>	<b>S</b>	<b>OTHER OPTION</b>
	02 thru 24	-01 = Through-hole -02 = Surface Mount	-T = Matte Tin		-LC = Locking Clip (Manual placement required) (-02 lead style only) -K = (6.50 mm) .256" DIA Polyimide film Pick & Place Pad (2-4 positions require -TR) (-02 lead style only) -TR = Tape & Reel Packaging (Available on positions 2-18) (-02 lead style only)



Due to technical progress, all designs, specifications and components are subject to change without notice.