



**XTV series**

**XTV 121000 12V 100AH**



**Valve Regulated Lead Acid Battery**

Maintenance-Free Sealed Lead Acid Battery.  
Absorbent Glass Mat (AGM) technology for efficient gas recombination of up to 99%.

**Design for Standby Power Applications at Extreme Temperatures**

**【Design Life】**

Up to 12 Years in Standby Service at 25°C  
Eurobat (20°C) : 10-12 years, Long Life

**【Operating Temperature Range】**

Nominal Operating Temperature : 25°C (77°F)  
Discharge : -20°C ~ 50°C (-4°F~122°F)  
Charge : -20°C ~ 50°C (-4°F~122°F)  
Storage : -15°C ~ 40°C (5°F~104°F)

**【Float Charging Voltage】**

13.5 ~ 13.8 VDC/Unit at 25°C (77°F)

**【Equalization Charging Voltage】**

14.4 ~ 15.0 VDC/Unit at 25°C (77°F)

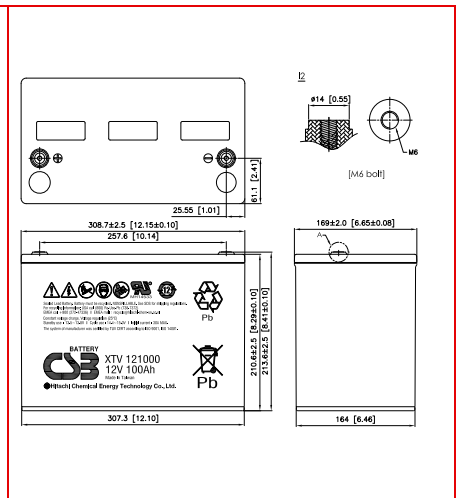
**【Self Discharge】**

Less than 10% after 90 days, can be stored up to 6 months at 25°C (77°F);  
Fully recharging is required before usage, and charged sooner if stored at higher temperature than 25°C (77°F).

**Specification**

Design according with IEC 60896-21/22:2004

Nominal Voltage	12V (6 cells per unit)		
Nominal Capacity	100 Ah @20hr-rate to 1.75V per cell @25°C (77°F)		
Weight	Approx. 30.20 Kg (66.56 lbs)		
Maximum Discharge Current	800A (5sec)		
Internal Resistance	Approx. 4.10 mΩ		
Short Circuit Current	2258A		
Maximum Charge Current	30A		
Terminal types	I2 thread lead alloy terminal to accept M6 bolt		
Terminal breaking Torque	138.6 Kgf-cm / 120.3 Lbf-in / 13.58 N-m		
Container Material	PP (UL 94-HB) & Flame Retardant (94-V0) available upon request		
Dimensions	Length (L)	308.7±2.5 mm	12.15±0.10 inch
	Width (W)	169.0±2.0 mm	6.65±0.08 inch
	Container Height (h)	210.6±2.5 mm	8.29±0.10 inch
	Overall Height (H)	213.6±2.5 mm	8.41±0.10 inch



**Constant Current Discharge Characteristics Unit: A (25°C, 77°F)**

F.V/Time	5 MIN	10MIN	15MIN	30MIN	60MIN	90MIN	2HR	3HR	5HR	8HR	10HR	20HR
1.60V	371	259	194	116	67.8	48.9	38.7	27.7	17.7	11.6	9.54	5.05
1.67V	328	242	188	114	67.2	48.7	38.4	27.4	17.5	11.5	9.47	5.02
1.70V	309	231	184	113	66.7	48.3	38.0	27.3	17.4	11.4	9.45	5.01
1.75V	282	212	173	110	65.5	47.7	37.6	26.9	17.3	11.3	9.38	5.00
1.80V	243	193	157	104	63.0	46.3	36.5	26.1	16.8	11.2	9.16	4.84
1.85V	191	170	138	96.9	59.1	43.8	34.6	25.2	16.1	10.7	8.82	4.63

**Constant Power Discharge Characteristics Unit: W (25°C, 77°F)**

F.V/Time	5 MIN	10MIN	15MIN	30MIN	60MIN	90MIN	2HR	3HR	5HR	8HR	10HR	20HR
1.60V	3591	2638	2095	1307	778	569	450	323	211	138	114	59.9
1.67V	3382	2513	2029	1286	775	567	447	321	210	137	113	59.6
1.70V	3268	2445	1987	1274	771	564	445	319	209	136	112	59.3
1.75V	2932	2308	1880	1245	761	557	440	316	207	135	111	59.0
1.80V	2572	2149	1727	1192	735	545	429	308	203	133	110	58.1
1.85V	2255	1872	1546	1125	695	519	412	297	194	129	105	55.9

Please refer to the official site for the latest rating confirmation. URL: [www.csb-battery.com](http://www.csb-battery.com)

Issued: 180205

**Sales Offices**

**日立化成能源科技股份有限公司**  
Hitachi Chemical Energy Technology Co., Ltd.

**BUSINESS HEADQUARTERS**

Tel: +886-2-2880-5600  
Fax: +866-2-2888-3300

**USA OFFICE**

Tel: +1-817-244-7777 / 1-(800)3-CSB-USA (272872)  
Fax: +1-817-244-4445

**SHENZHEN OFFICE (CHINA)**

Tel: +86-755-8831-6488, 8831-6775  
Fax: +86-755-8831-6075

**EUROPE (EMEA) OFFICE**

Tel: +31(0)180-418-140  
Fax: +31(0)180-418-327

**SHANGHAI OFFICE (CHINA)**

Tel: +86-21-5046-1622, 5046-0833  
Fax: +86-21-5046-1046

**TAIPEI OFFICE**

Tel: +886-2-2880-5600  
Fax: +866-2-2888-3300

**BEIJING OFFICE (CHINA)**

Tel: +86-10-5820-5336, 5820-5338  
Fax: +86-10-5820-3053

Recognized under UL 1989,  
and certified by ISO 9001, 14001.

