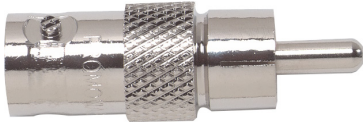


Straight BNC Jack-to-RCA Phono Plug Adaptor



RoHS
Compliant



Specifications

Electrical

Frequency Range : DC – 250MHz
Nominal Impedance : BNC: 50Ω
RCA: 75Ω

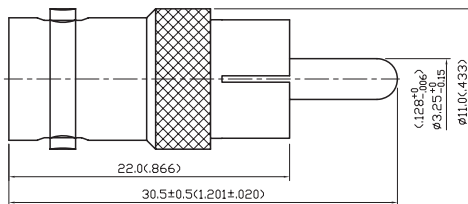
Material

Body : Brass, 100μ" Nickel Plated
Center Contact : Brass, Gold Plated
Insulation : POM
Washer : Brass, Nickel Plated

Environmental

Operating Temperature Range : -40°C to +60°C

Diagram



Dimensions : Millimetres (Inches)

No.	Description	Material	Finish	Qty.
1	Body	Brass	Nickel 100μ Min.	1
2	Washer	Brass	Nickel	
3	Insulation	POM	None	
4	Center Contact	Brass	Gold	
5	Insulation	POM	None	

Part Number Table

Description	Part Number
Straight RCA Plug – BNC Jack Adaptor, 75Ω/50Ω	R14-005-01-000112000

Important Notice : This data sheet and its contents (the "Information") belong to the members of the Premier Farnell group of companies (the "Group") or are licensed to it. No licence is granted for the use of it other than for information purposes in connection with the products to which it relates. No licence of any intellectual property rights is granted. The Information is subject to change without notice and replaces all data sheets previously supplied. The Information supplied is believed to be accurate but the Group assumes no responsibility for its accuracy or completeness, any error in or omission from it or for any use made of it. Users of this data sheet should check for themselves the Information and the suitability of the products for their purpose and not make any assumptions based on information included or omitted. Liability for loss or damage resulting from any reliance on the Information or use of it (including liability resulting from negligence or where the Group was aware of the possibility of such loss or damage arising) is excluded. This will not operate to limit or restrict the Group's liability for death or personal injury resulting from its negligence. Multicomp is the registered trademark of the Group. © Premier Farnell Limited 2016.

www.element14.com
www.farnell.com
www.newark.com

