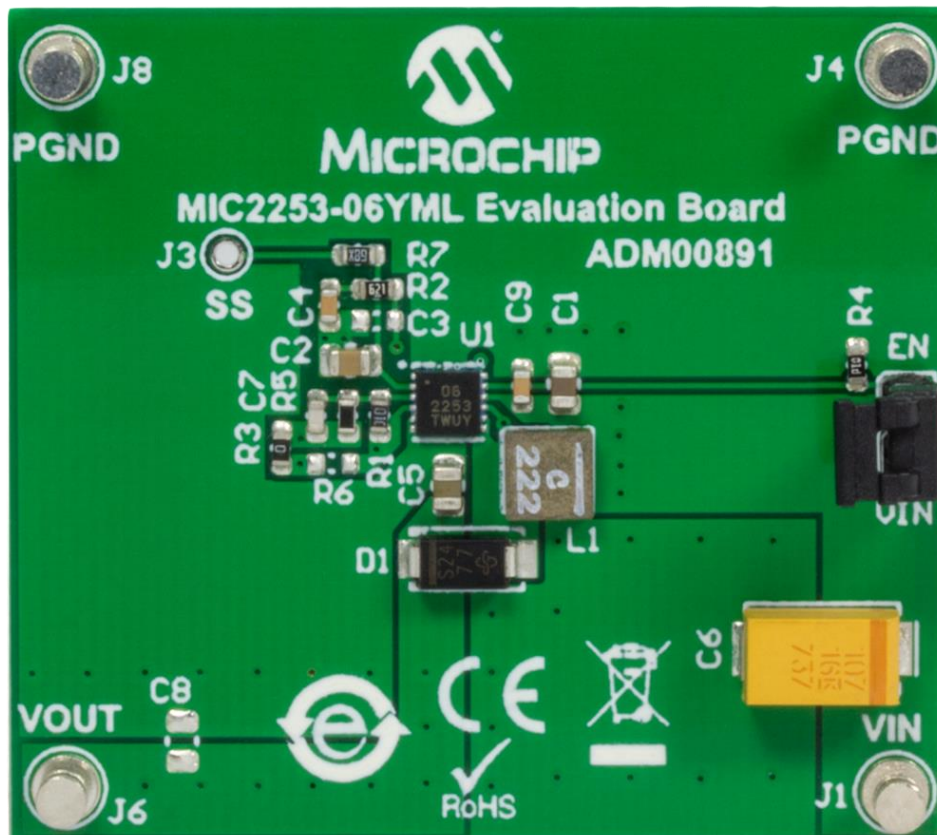




## MIC2253 3.5A 1MHz Boost Reg Eval Board

Part Number: ADM00891

MIC2253 Evaluation Board was developed to evaluate the capabilities of the MIC2253 high-efficiency 3.5A switch current limit integrated switch, non-synchronous boost (step-up) regulator. The MIC2253 achieves over 90% efficiency while still switching at 1MHz over a broad load range.



Features:

1. 2.5V to 10V input voltage range
2. Fixed 1MHz switching frequency
3. 1.245V +/- 3% feedback voltage
4. Output voltage up to 30V (max)
5. Externally programmable soft-start
6. <1% line regulation
7. <0.1 $\mu$ A shutdown current
8. Over temperature protection
9. Under-voltage lockout (UVLO)

Package contents:

1x MIC2253 3.5A 1MHz Boost Reg Eval Board