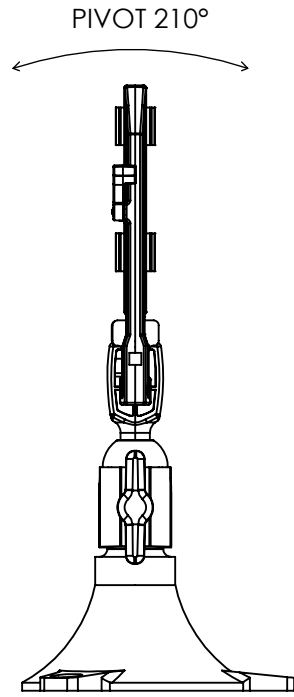
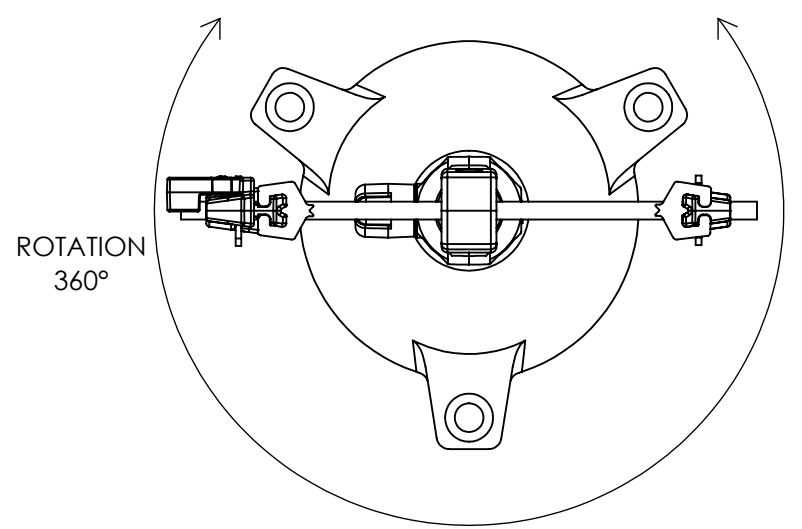


8 7 6 5 4 3 2 1

REVISIONS				
ZONE	REV.	DESCRIPTION	DRAWN/DATE	APPROVED/DATE
	PR1	INITIAL RELEASE OF PRODUCT SPECIFICATIONS	IM 6/21/2017	



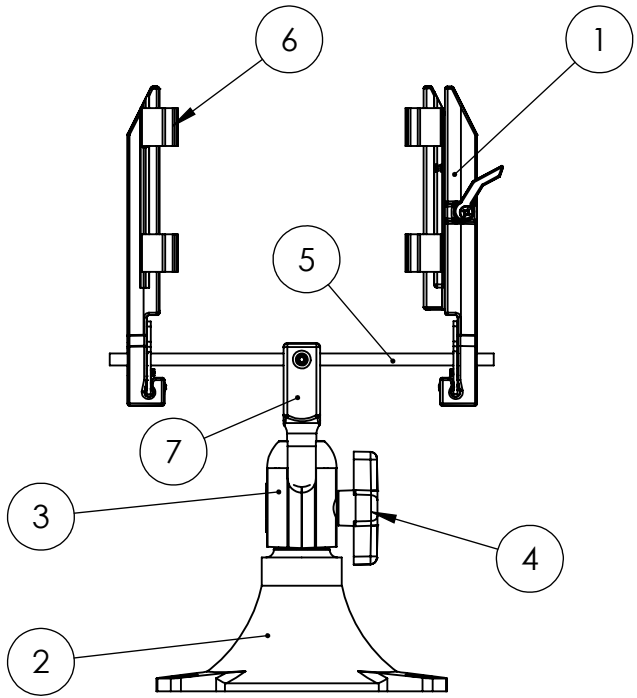
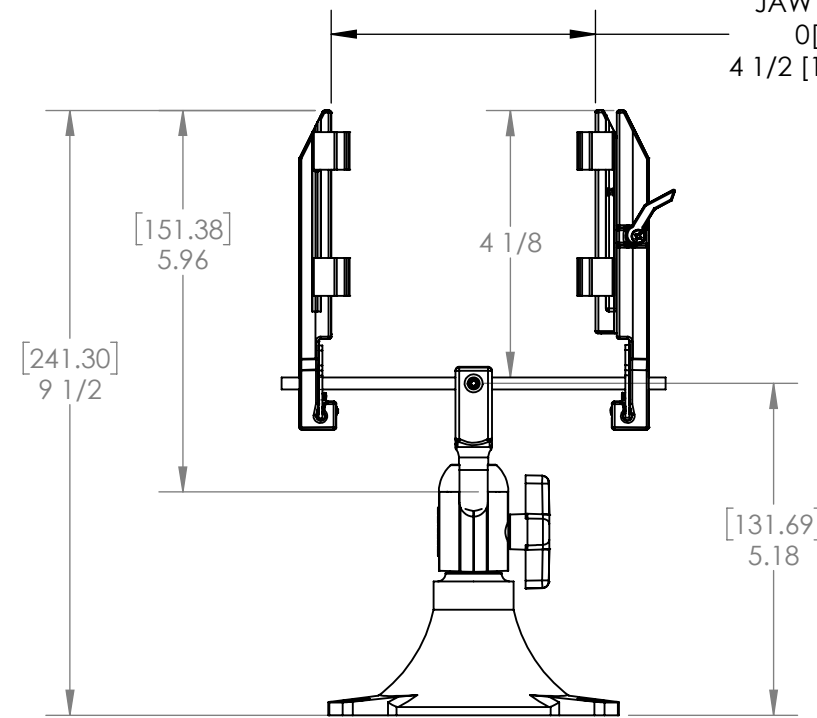
**SPECIFICATIONS**

OVERALL HEIGHT: .....9 1/2 [241.30]  
 ROTATION: .....360 DEGREES  
 SWIVEL: .....360 DEGREES  
 PIVOT: .....210 DEGREES  
 SHIPPING WEIGHT: .....1.2 POUNDS [.54KG]  
 VISE OPENING: .....4 1/2 [114.30] MAXIMUM  
 JAW HEIGHT: .....4 1/8 [104.78]

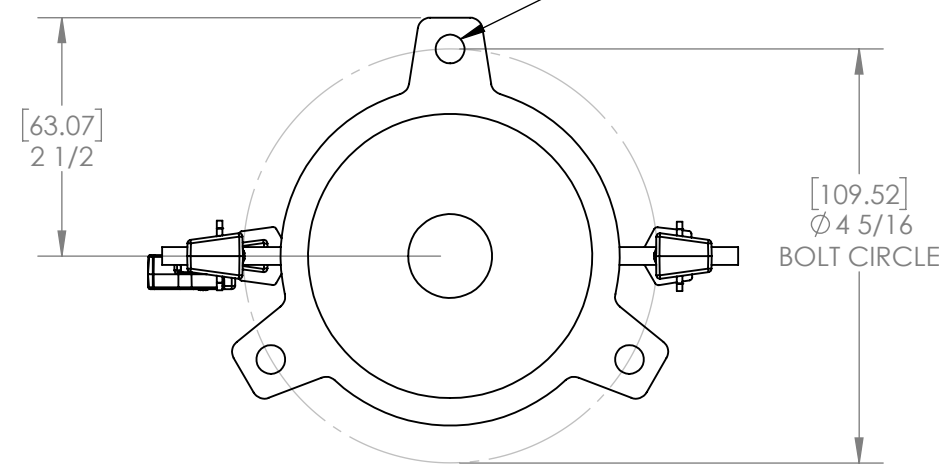
**MATERIAL**

1. VISE ARM PAIR ASSY: ALUMINUM #380 DIE CAST
2. BASE: #3 ZINC DIE CAST - SILVER PAINT
3. BALL JOINT KNUCKLES: #3 ZINC DIE CAST SILVER PAINT
4. KNOB: KNUCKLE ASSEMBLY ZINC DIE CAST PAINTED BLACK  
1/4-28 X 7/8 STEEL SOCKET SCREW BLACK OXIDE
5. CROSS BAR: ZINC-PLATED STEEL
6. STANDOFFS: SILICONE RUBBER, BLACK, SHORE 80±5
7. BALL: PA6+30%GF-BLACK


JAW OPENING  
 0[0] MIN  
 4 1/2 [114.30] MAX



DESIGNED FOR 1/4" FLAT HEAD SCREWS



**PROPRIETARY AND CONFIDENTIAL**  
 THE INFORMATION CONTAINED IN THIS DRAWING IS THE SOLE PROPERTY OF PANAVISE PRODUCTS INC. ANY REPRODUCTION IN PART OR AS A WHOLE WITHOUT THE WRITTEN PERMISSION OF PANAVISE PRODUCTS INC IS PROHIBITED.

UNLESS OTHERWISE SPECIFIED:		NAME	DATE	 7540 Colbert Drive, Reno, Nevada 89511-1225 Phone (775) 850-2900 Fax (775) 850-2929	
DIMENSIONS ARE IN INCHES		DRAWN	IM		062117
TOLERANCES:		CHECKED			
FRACTIONAL ±1/64		ENG APPR.			
ANGULAR:		MFG APPR.			
MACH ±1/2° BEND ±1°		Q.A.			
TWO PLACE DECIMAL ±01		COMMENTS:			
THREE PLACE DECIMAL ±.005					
INTERPRET GEOMETRIC TOLERANCING PER: ASME 14.5M -2009					
MATERIAL					
FINISH					
NEXT ASSY	USED ON				
APPLICATION		DO NOT SCALE DRAWING			

**MODEL 220 SPEC SHEET**

SIZE	DWG. NO.	REV
<b>B</b>	220 SP	<b>A</b>
SCALE: 1:5	WEIGHT:	SHEET 1 OF 1

8 7 6 5 4 3 2 1