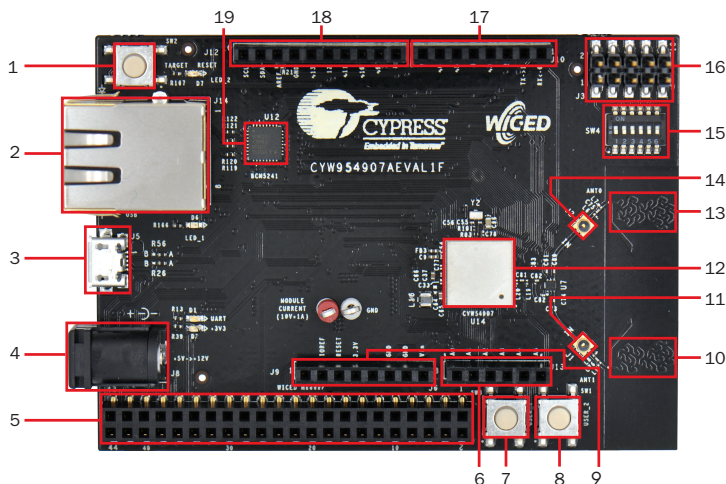




# CYW954907AEVAL1F EVALUATION KIT

CYW954907AEVAL1F Evaluation Board Details



- |  |  |
|--|--|
| 1. Reset Switch SW2                                | 10. PCB Antenna - Main ANT1                                    |
| 2. RJ45 Connector J14                              | 11. Connector for External Antenna1 J1                         |
| 3. Micro USB (Power, Programming and Debugging) J5 | 12. CYW54907 Type 1PS Module (Murata)                          |
| 4. 5-12V Power Input (Optional) J8                 | 13. PCB Antenna - Diversity ANT0                               |
| 5. WICED Header J6                                 | 14. Connector for External Antenna 0 J2                        |
| 6. Arduino Header J13                              | 15. On-board programmer and debugger /External JTAG Switch SW4 |
| 7. User Switch 1 SW3                               | 16. External JTAG Header J3                                    |
| 8. User Switch 2 SW1                               | 17. Arduino Header J10   |
| 9. Arduino Header J9                               | 18. Arduino Header J12   |
|  | 19. External PHY Chip (BCM5241) U12                            |

For the latest information about this kit, visit [www.cypress.com/CYW954907AEVAL1F](http://www.cypress.com/CYW954907AEVAL1F)