

Ø 6 mm Panel Receptacles

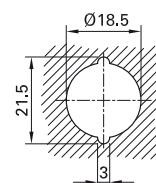
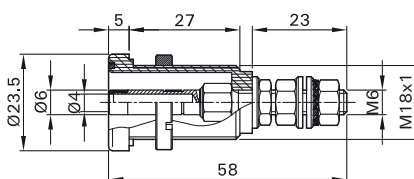
Panel Receptacles ID/S6AR-N-B4S

Insulated, with Ø 6 mm pin, made of silver-plated brass, accepting Ø 6 mm sockets with spring-loaded MULTILAM and rigid insulating sleeve. With the integrated Ø 4 mm socket, the terminal mates alternatively with

spring-loaded Ø 4 mm plugs with rigid insulating sleeve. The terminal has a black housing and is fitted with a colored ring on the front side. In combination with the test leads SLK6..-AR/B.., a locked connection

can be made. The terminal is screwed into pre-drilled panels of plastic, metal, etc.

Connection: Threaded bolt M6.



Order No.	Type	Rated voltage/current		*Colors (only color ring)										
14.0034-*	ID/S6AR-N-B4S	600 V, CAT III / 80 A	Ag c RL US	<table border="1"> <tr> <td>20</td> <td>21</td> <td>22</td> <td>23</td> <td>24</td> </tr> <tr> <td>25</td> <td>26</td> <td>27</td> <td>28</td> <td>29</td> </tr> </table>	20	21	22	23	24	25	26	27	28	29
20	21	22	23	24										
25	26	27	28	29										



Tube spanner SS6, page 107



Assembly instructions MA038

www.staubli.com/electrical