

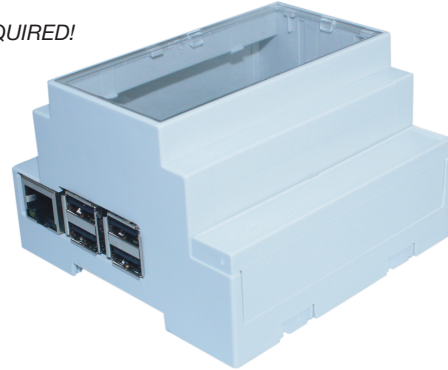
DEVELOPMENT BOARD ENCLOSURES

RASPBERRY PI STYLE ENCLOSURES

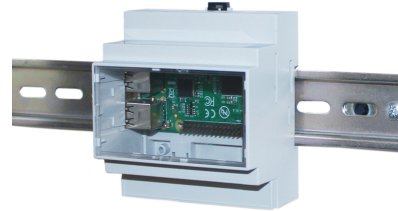
DIN Rail Pi B+ P2 P3 Enclosures

No screws, no glue – just add your **Raspberry Pi** filling!

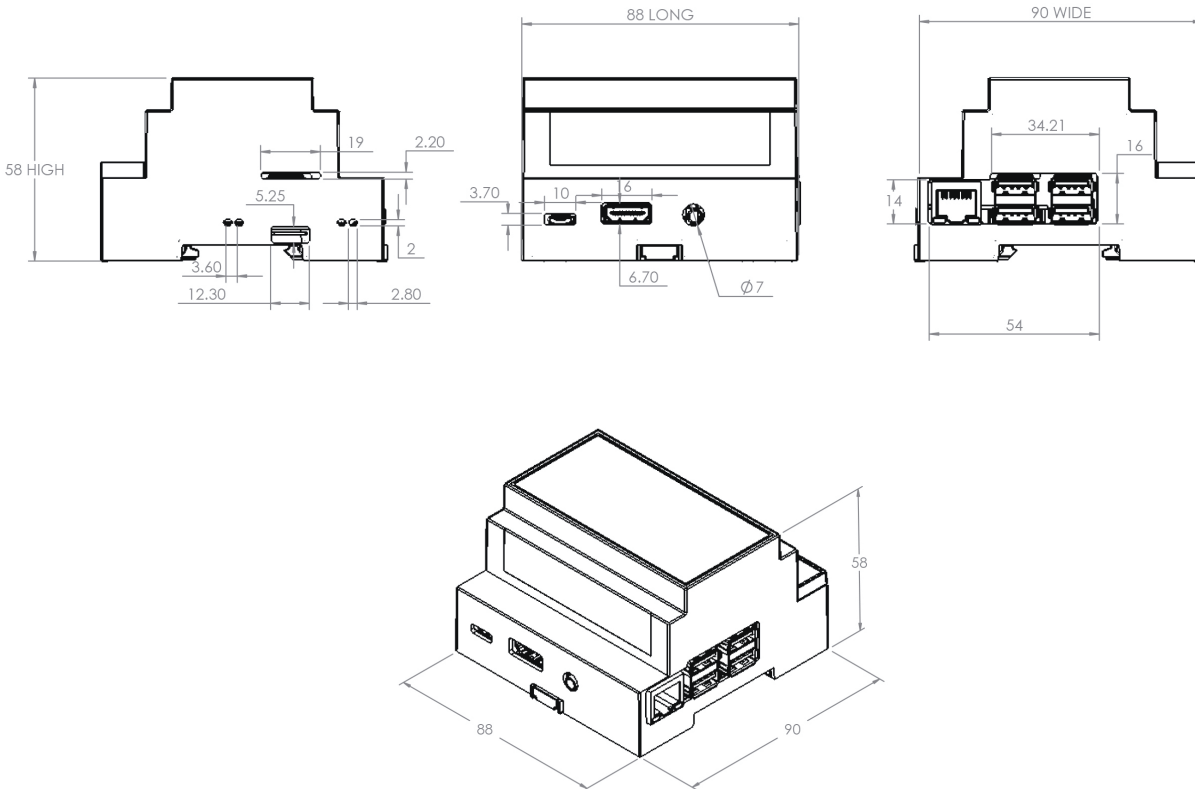
- Designed to house the **Raspberry Pi B+, P2, P3** via clip-in design - **NO SCREWS REQUIRED!**
- All cut-outs are pre-cut into the case - **NO MODS REQUIRED!**
- I/O Connector can be accessed through the terminal guard
- Slot for display ribbon cable
- DIN rail mountable
- Wall mountable
- Moulded in PC (Polycarbonate)
- L 88mm x W 90mm x H 58mm



Raspberry Pi B+, P2, P3 PCB not included



CB PART NO.	DESCRIPTION
CBRPI-DR-2-3-CLR	Raspberry Pi B+ DIN Rail Enclosure with Grey Lid
CBRPI-DR-2-3-GRY	Raspberry Pi B+ DIN Rail Enclosure with Clear Lid



UNIVERSAL ENCLOSURES

HAND HELD CASES

HEAVY DUTY ENCLOSURES

DIN RAIL ENCLOSURES

INTERFACE SUPPORTS

ELECTRICAL ENCLOSURES

DIECAST & METAL ENCLOSURES

DESKTOP & INSTRUMENT CASES

MULTI-PURPOSE & POTTING BOXES

19" ENCLOSURES

19" CABINETS

DEVELOPMENT BOARD ENCLOSURES

CUSTOM SIZED ENCLOSURES

FSPT/ CUSTOM SERVICES



+44 (0)1638 716101
info@camdenboss.com
www.camdenboss.com

We operate a constant improvement policy, our products are subject to change without notice.

Ver 2

